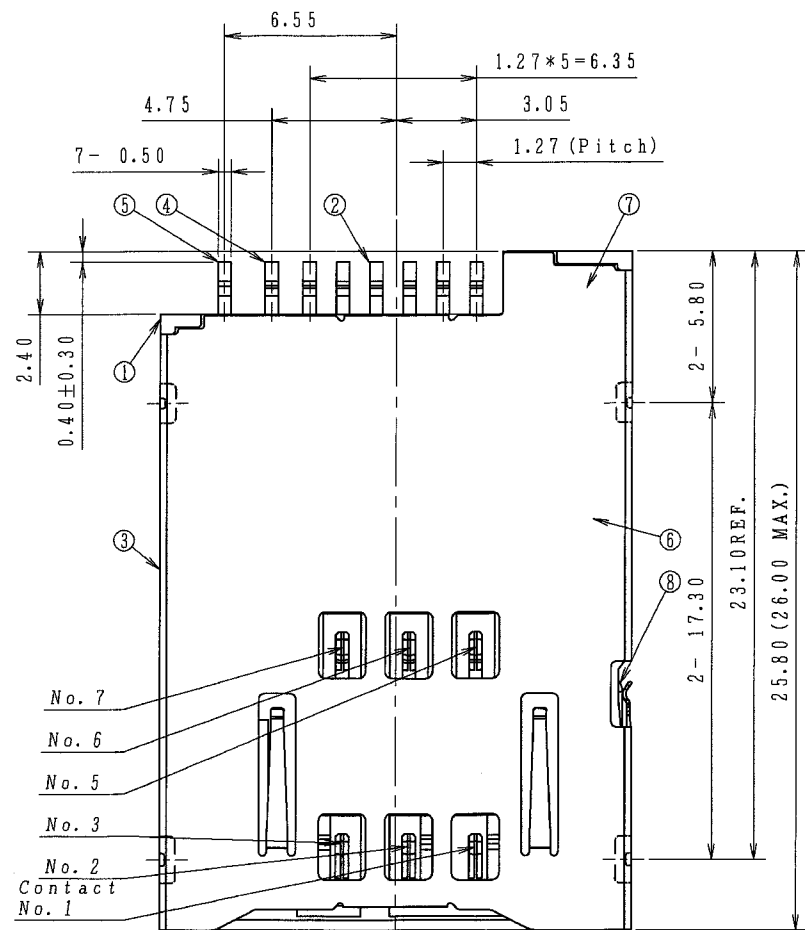
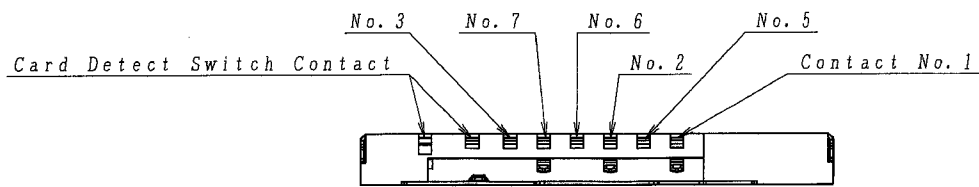
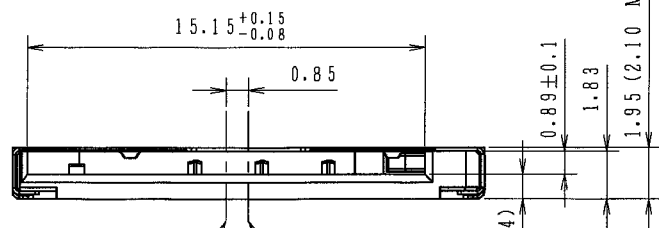




REV.	DATE	ZONE	DESCRIPTION	DESIGNED	CHECKED	APPROVED DATE
A	Jun. 16, 2006		Initial Issued			
B	Jun. 20, 2006		Corrected mis-writing Pin No.	S. Iida	K. Takei	H. Kikuchi Jun. 20, 2006
C	Jul. 14, 2006		Changed Design	S. Iida	H. Takahashi	H. Kikuchi Jul. 14, 2006
D	Jul. 21, 2006		Changed Dimension	K. Takei	H. Takahashi	H. Kikuchi Jul. 21, 2006



Center of Connector
Center of 17.95



Center of Card Slot
Center of Connector
Center of 17.95

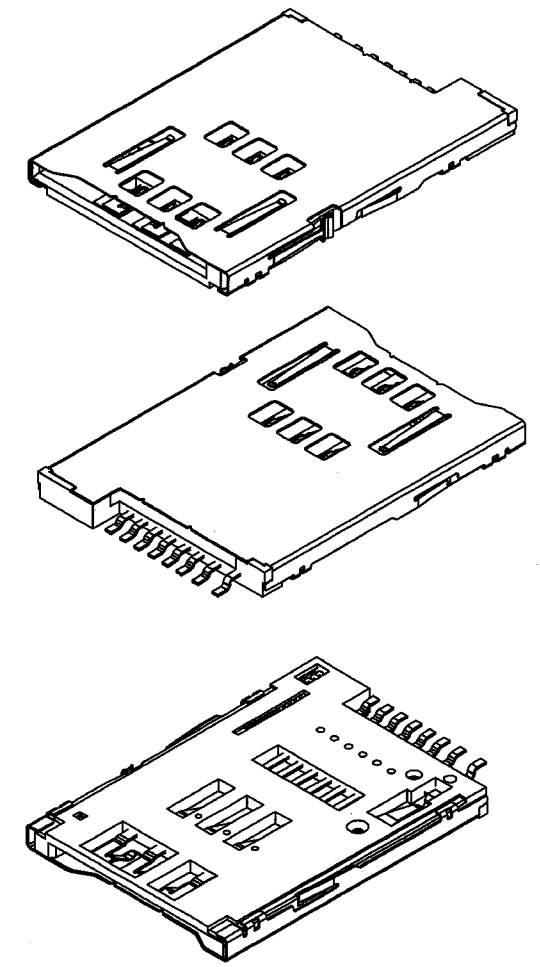
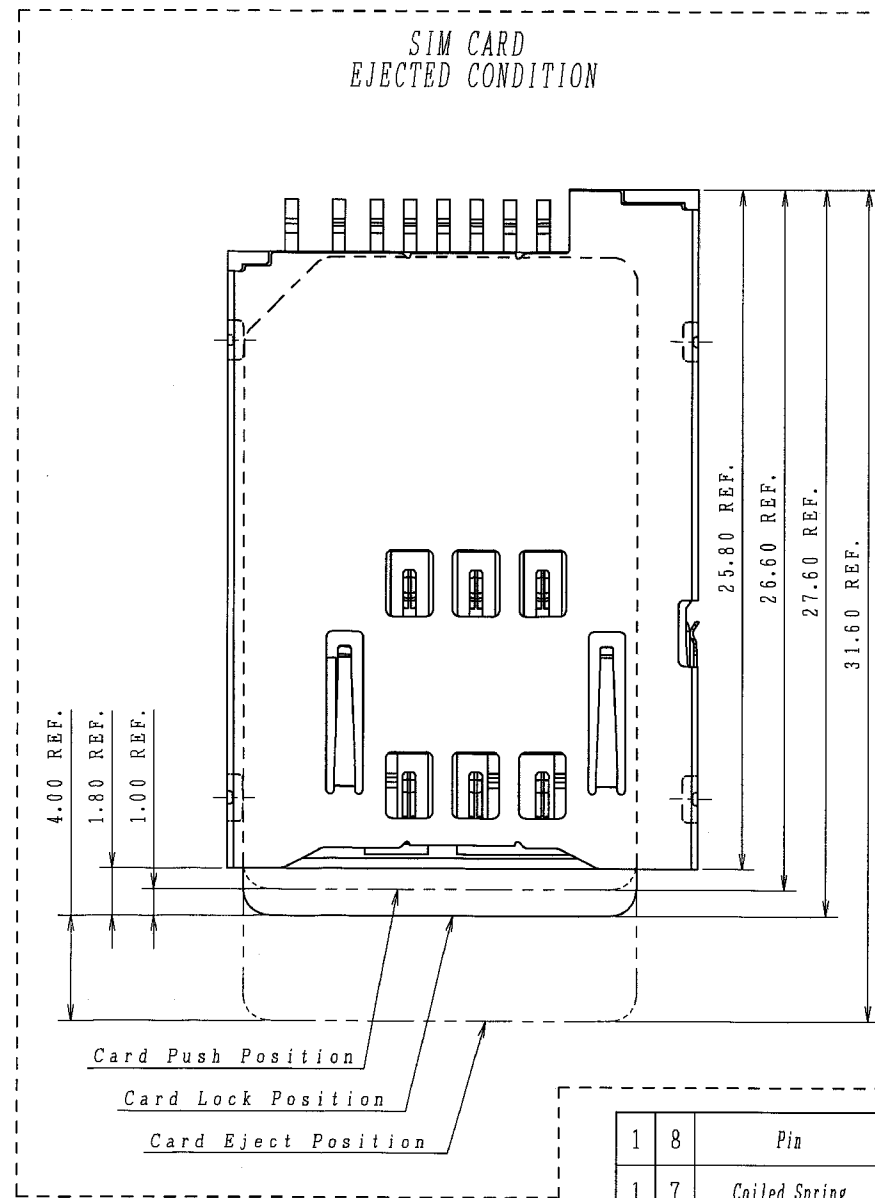


Figure-1 Solid Drawing

TABLE-1 (Plating Specification)

Part Number	Mating Area	PCB Termination Area
TEJ-RS06-L02-FG	Signal Contact Card Detect Contact	Gold (0.5 μm Minimum) over Nickel
Lead Free Version	Shell	Gold Flash over Nickel Plating
		Without Plating or Lead Free Plating

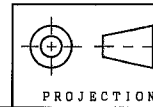
Part Numbering Code

TEJ-RS06-L02-FG

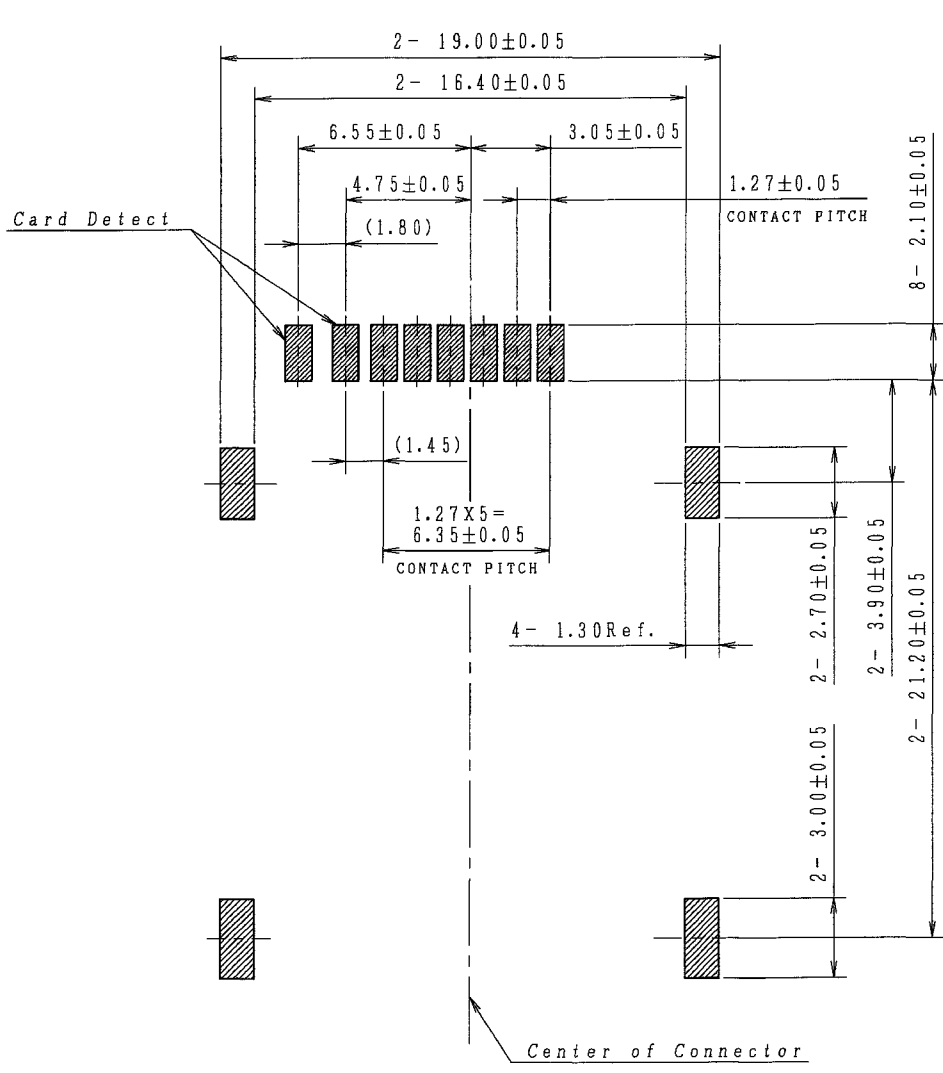
- Series Name
TEJ: DDK Memory Card
Connector Type-J Series
- Mating Style
R: Receptacle Connector
- Termination Style
S: Surface Mounting Type
- Number of Contact
06: 6 contacts
- Tail Bending Style
L: Right angle Type
- Contact Plating Specification
02: See TABLE-1
- Type of Contact Termination Area Plating
-FG: Gold Plating

QTY.	ITEM	PART NAME	MATERIAL	FINISH, OTHER
1	8	Pin	Stainless Steel	
1	7	Coiled Spring	Stainless Steel	
1	6	Slider	High Temperature Plastic	UL Grade: UL94V-0 Rated Color: Black
1	5	Card Detect Contact-B	Copper Alloy	See TABLE-1
1	4	Card Detect Contact-A	Copper Alloy	See TABLE-1
1	3	Shell	Copper Alloy	See TABLE-1
6	2	Contact	Copper Alloy	See TABLE-1
1	1	Housing	High Temperature Plastic	UL Grade: UL94V-0 Rated Color: Black

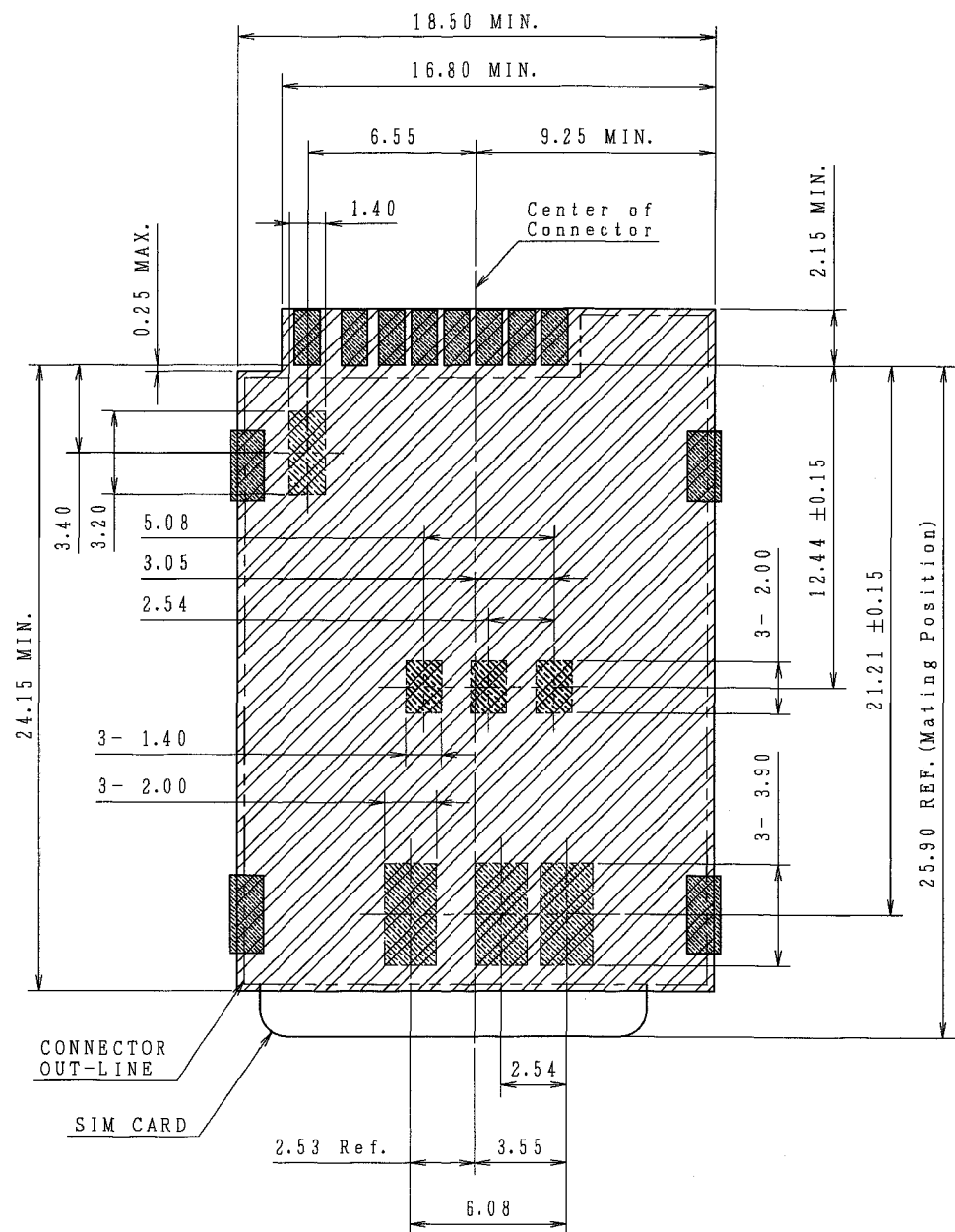
APPROVED	DESIGNED	SCALE	GENERAL TOLERANCE	TITLE
H. Kikuchi	K. Takei	5/1	NOMINAL DIMENSION X < 5 ±0.15 5 ≤ X < 15 ±0.25 X > 15 ±0.40	6-Pin, SIM Connector, Standard Mounting SMT Type, Low Profile, Push-Push Eject Type TEJ-RS06-L02-FG
Jun. 16, 2006	Jun. 16, 2006	UNIT	ANGLE ±3°	DRAWING NUMBER
H. Takahashi	S. Iida	mm		G-503184 (1/2)
Jun. 16, 2006	Jun. 16, 2006			REV. D



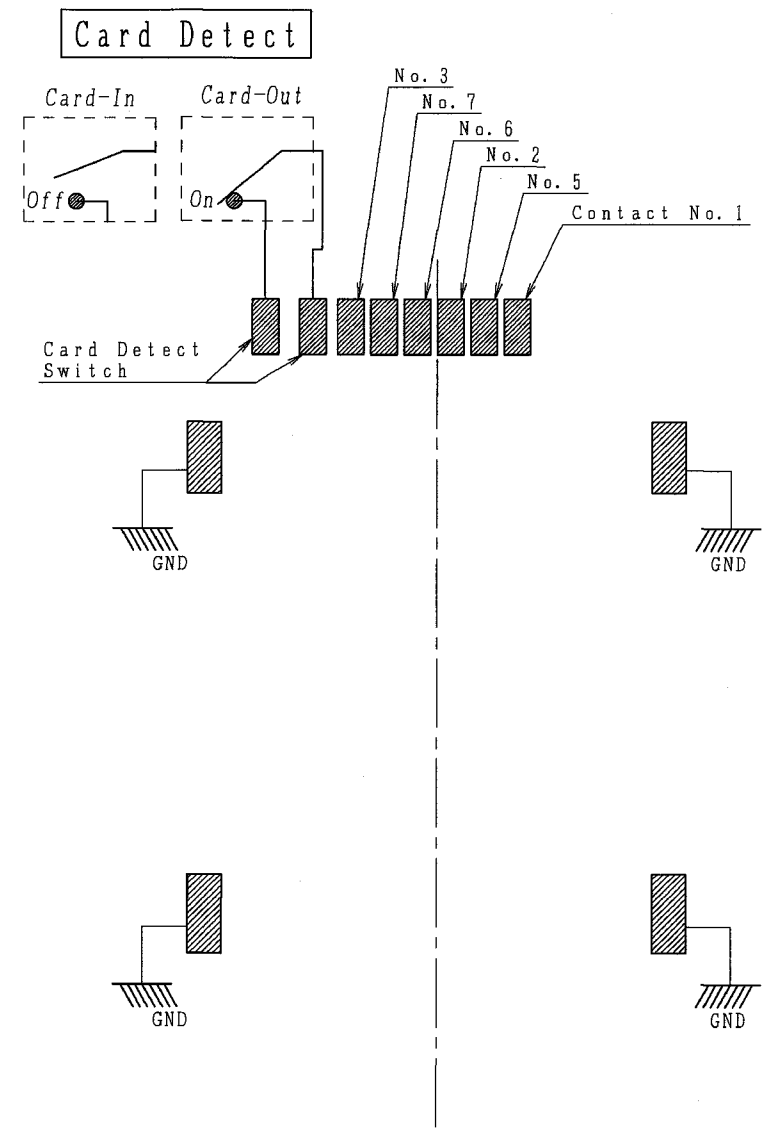
REV.	DATE	ZONE	DESCRIPTION	DESIGNED	CHECKED	APPROVED DATE
B	Jun. 20, 2006					
C	Jul. 14, 2006					



The Direction of Inserting SIM Card
 Recommended PCB Mounting Dimensions
 (Connector Mounting Side View)



Do not mount other parts in this area.
 Do not make pattern, via hole and through hole in this area.



Switch Function
 and Pin Assignment

QTY.	ITEM	PART NAME	MATERIAL	FINISH, OTHER
	APPROVED	DESIGNED	SCALE	GENERAL TOLERANCE
	H. Kikuchi	K. Takei	5/1	NOMINAL DIMENSION
	Jun. 16, 2006	Jun. 16, 2006		X < 5 ±0.15
	CHECKED	DRAWN BY	UNIT	5 ≤ X < 15 ±0.25
	H. Takahashi	S. Iida	mm	X > 15 ±0.40
	Jun. 16, 2006	Jun. 16, 2006		ANGLE ±3°
TITLE 6-Pin, SIM Connector, Standard Mounting, SMT Type, Low Profile, Push-Push Eject Type TEJ-RS06-L02-FG				DRAWING NUMBER G-503184 (2/2)
PROJECTION				REV. D