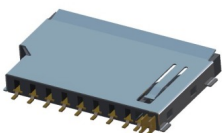
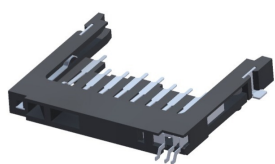


Specifications

Current rating: 0.5A AC DC
 Voltage rating: 250V AC DC
 Temperature rating: -25°C~+85°C
 Contact resistance: 40mΩ max.
 Insulation resistance: 1000MΩ min.
 Withstanding voltage: 500V AC/min.
 Insertion Force: 40N max.
 Withdrawal Force: 2N min.

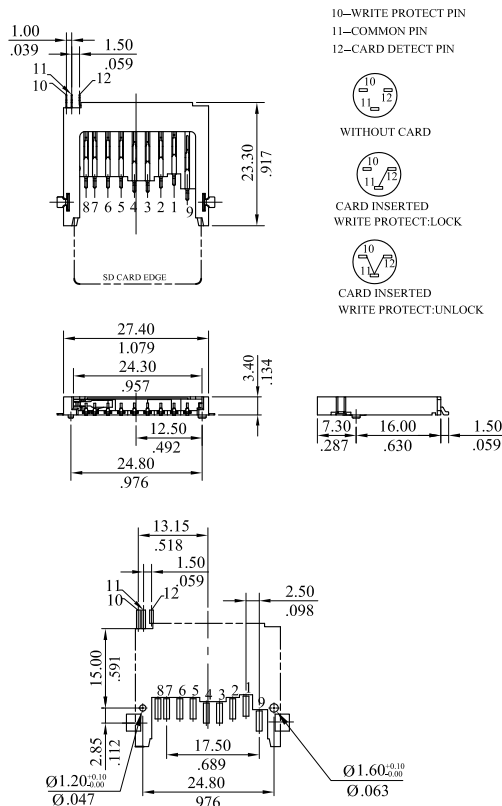
Standards

RoHS Compliant



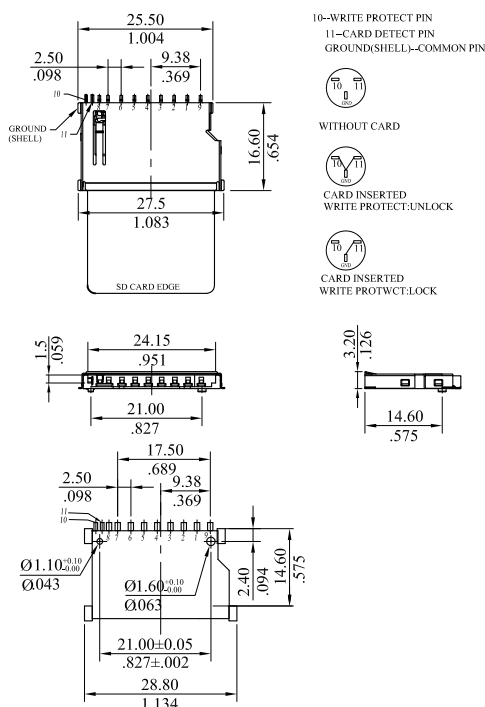
1286 Secure Digital Memory Card Connector

12860000000



Recommended PCB Layout

1286000U1A4



Recommended PCB Layout

Features

1286 Connector:
 Base: High temperature thermoplastic
 Contact: Phosphor bronze
 Shell: Copper alloy
 Plating:
 Contact area: Gold plated over nickel
 Solder tail: 100u"tin over nickel
 Shell: Ni or gold plated
 Compact size and low-profile
 Available for both SD Memory Card and Multi-Media Card

P/N 1286 0 00 * * * *
1 2 3 4 5 6 7

- Series No.
- Type
 - 0: Normal type
- Standoff
 - 00: Without standoff
- Plating of terminal
 - U: Selective gold flash
 - X: Selective gold 10u"min.
 - W: Selective gold 15u"min.
 - G: Selective gold 50u"min.
- Shell & Ground
 - 0: Without shell
 - 1: With shell
- Insulator color
 - 0: Black (Plating station not in line)
 - A: Black (Plating station in a line)
- Others
 - 0: Normal mount type (Without ejector)
 - 4: Short type (Reverse mount type)