

2.00mm (.079") Wire to Board Connector

Unit: $\frac{\text{mm}}{\text{Inch}}$

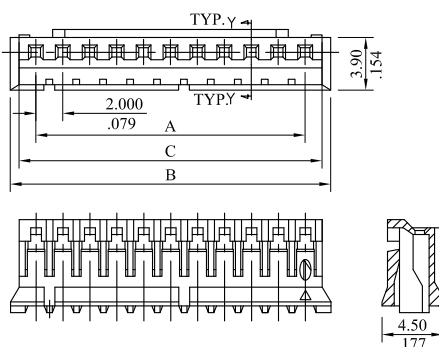
Specifications

Current rating: 2A AC DC
 Voltage rating: 125V AC DC
 Temperature rating: -25°C~+105°C
 Contact resistance: 20mΩmax.
 Insulation resistance: 1000MΩmin.
 Withstanding voltage: 500V AC/min.

Standards

- Recognized No. E82349
- Certified No. LR65731
- RoHS Compliant

2010 Series 2.00mm (.079") Housing



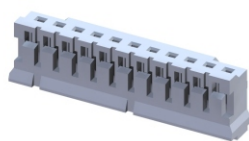
Features

2010 Housing:
 Available in 2~20 circuits
 Nylon 6/6 UL94V-0
 Low profile
 With molded locking ramp

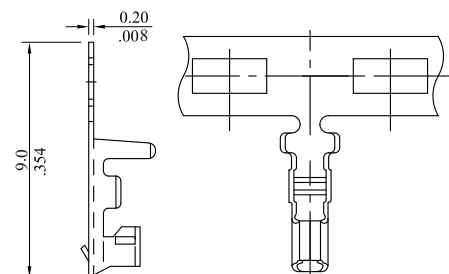
P/N 2010S ** 0000
I

1. No. of circuits

A=2.0mm(.079")x No. of spaces
 B=A+3.8mm (.150")
 C=A+2.5mm(.098")



2033T Crimping Terminal

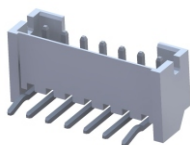
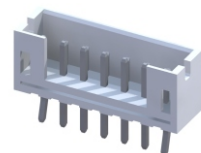


Features

2033 Terminal:
 Dual beam contact
 Wire range: AWG 24~30
 Mates with 0.5mm (0.20") square pin
 Phosphor bronze/Tin plated

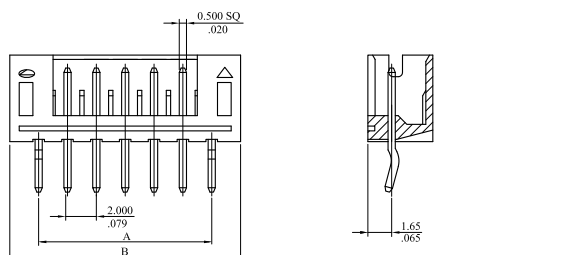
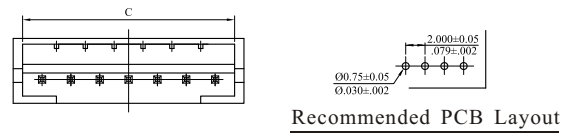
P/N 2033TPB0000

Package: 10K PCS/Reel



2011 Series 2.00mm (.079") Header

Straight (V version)



Features

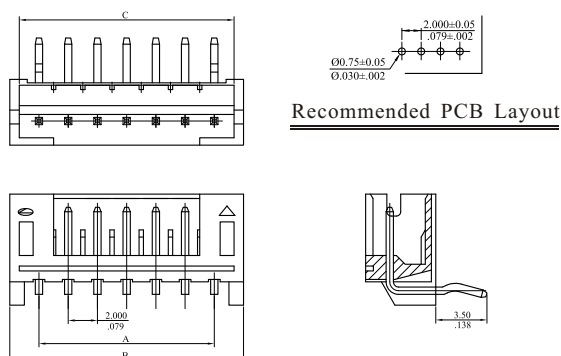
2011 Header:
 Available in 2~20 circuits
 Nylon 6/6 UL94V-0
 0.5mm (0.20") square pin
 Low profile
 Fully shrouded
 With polarized slot
 PCB thickness 1.6mm

P/N 2011P *** 000
I 2

1. No. of circuits
 2. V= Straight type
 H= Right angle type

A=2.0mm(.079")x No. of spaces
 B=A+4.0mm (.157")
 C=A+2.7mm (.106")

Right Angle (H version)



2.00mm (.079") Board In Connector

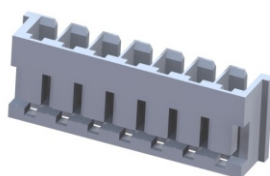
Unit: $\frac{\text{mm}}{\text{Inch}}$

Specifications

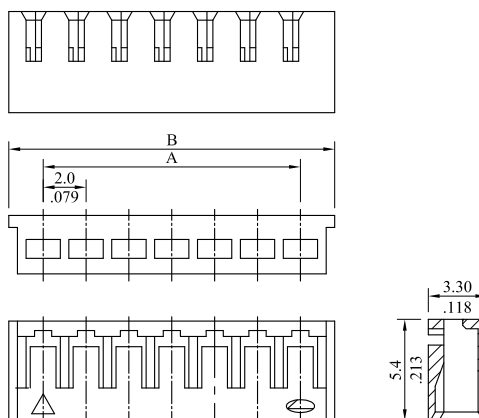
Current rating: 2A AC DC
 Voltage rating: 250V AC DC
 Temperature rating: -40°C ~ +105°C
 Contact resistance: 20mΩ max.
 Insulation resistance: 1000MΩ min.
 Withstanding voltage: 1000V AC/min.

Standards

Recognized No. E82349
 RoHS Compliant



2012 Series 2.00mm (.079") Board In Connector



Features

2012 Housing:
 Available in 2~20 circuits
 Low profile
 Nylon 6/6 UL94V-0
 PCB thickness 1.6mm

P/N 2012S **** 0000**
I

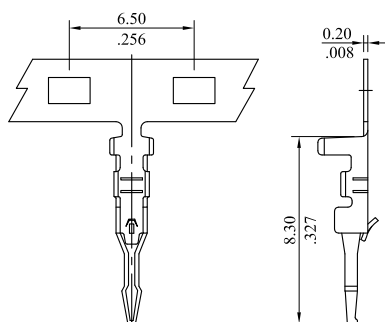
1. No. of Circuits

A=2.0 (.079") x No. of spaces
 B=A+3.5mm (.138")



2012T Series 2.00mm (.079") Board In Terminal

2012TPB0V0A



Features

2012 Terminal:
 Compliant tip holes terminal to PCB
 Direct solder on PCB

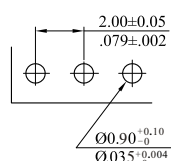
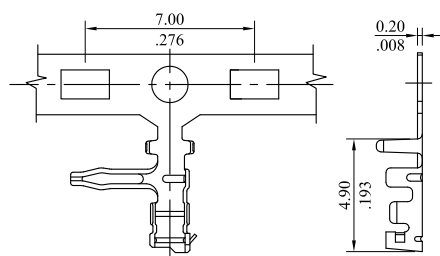
P/N 2012TPB0V0A

Phosphor bronze/Tin plated
 Wire range: AWG 24~28
 Package: 10K PCS / Reel

P/N 2012TPB0H0A

Phosphor bronze/Tin plated
 Wire range: AWG 24~30
 Package: 10K PCS / Reel

2012TPB0H0A



Recommended PCB Layout

2.00mm (.079") Wire to Board Connector

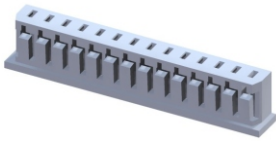
Unit: $\frac{\text{mm}}{\text{Inch}}$

Specifications

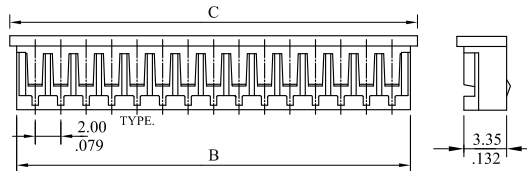
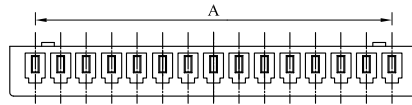
Current rating: 2A AC DC
 Voltage rating: 125V AC DC
 Temperature rating: -20°C~+85°C
 Contact resistance: 20mΩ max.
 Insulation resistance: 1000MΩ min.
 Withstanding voltage: 800V AC/min.

Standards

Recognized No. E82349
 RoHS Compliant



2015 Series 2.00mm (.079") Housing



Features

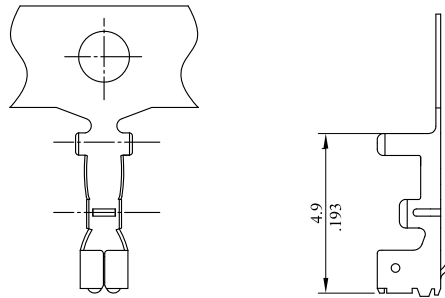
2015 Housing:
 Available in 2~15 circuits
 Polarized with locking ribs
 Insulator PBT UL94V-0

P/N 2015S $\frac{**}{I}$ 0000

I.No.of circuits

A=2.0mm(.079")x No.of spaces
 B=A+2.9mm(.114")
 C=A+4.0mm(.157")

2015T Crimping Terminal



Features

2015 Terminal
 Wire range: AWG 24~28
 Phosphor bronze/Tin plated

P/N 2015TPB0000

Package: 10K PCS/Reel

2.00mm (.079") Wire to Board Connector

Unit: $\frac{\text{mm}}{\text{Inch}}$

Specifications

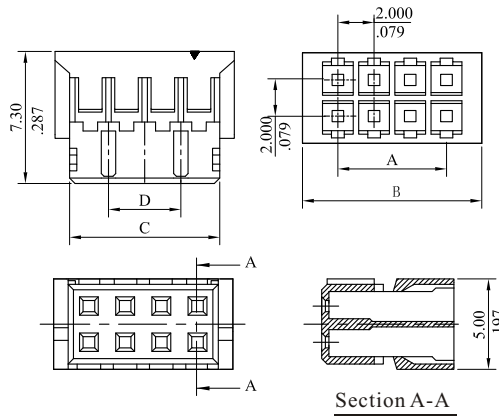
Current rating: 2A AC DC
 Voltage rating: 250V AC DC
 Temperature rating: -25°C~+85°C
 Contact resistance: 20mΩ max.
 Insulation resistance: 1000MΩ min.
 Withstanding voltage: 500V AC/min.

Standards

Recognized No. E82349

RoHS Compliant

2020 Series 2.00mm (.079") Housing



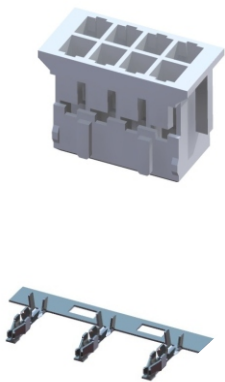
Features

2020 Housing:
 Available in 6~34 circuits
 Polarized with locking ribs
 Nylon 66 UL94V-0

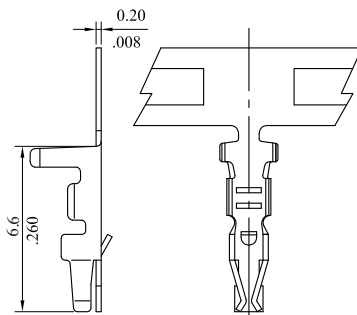
P/N 2020S $\frac{**}{1}$ $\frac{000}{2}$ *

- No. of circuits
- Housing color option
 0=White 1=Black

A=2.00mm(.079")x No. of spaces
 B=A+3.9mm(.154")
 C=A+2.3mm(.091")
 D=A-2.0mm(.079")



2020T Crimping Terminal



Features

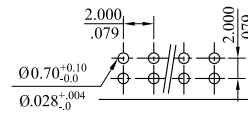
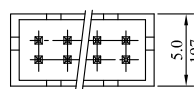
2020 Terminal:
 Dual beam contact
 Wire range: AWG 20~28
 Phosphor bronze/Tin plated

P/N 2020TPB0000

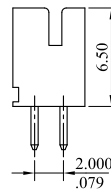
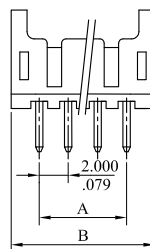
Package: 10K PCS/Reel

2020 Series 2.00mm (.079") Header

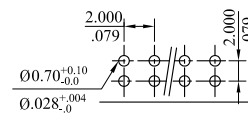
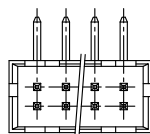
Straight (V version)



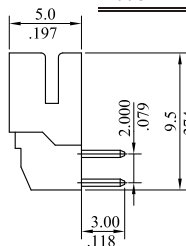
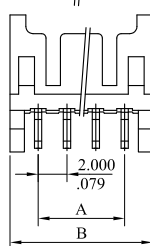
Recommended PCB Layout



Right Angle (H version)



Recommended PCB Layout



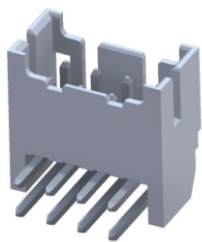
Features

2020 Header:
 Available in 6~34 circuits
 Polarization slots
 Nylon 66 UL94V-0
 0.50mm(.020") square pin
 Applicable PC board
 thickness: 1.6mm

P/N 2020P $\frac{**}{1}$ $\frac{000}{2}$ *

- No. of circuits
- V= Straight type
 H= Right angle type

A=2.00mm(.079")x No. of spaces
 B=A+3.90mm(.154")



2.00mm (.079") Wire to Board Connector

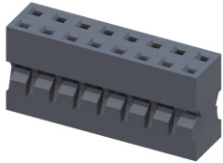
Unit: $\frac{\text{mm}}{\text{Inch}}$

Specifications

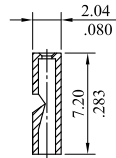
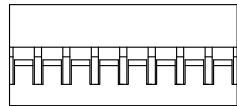
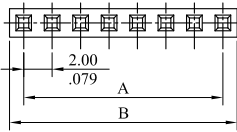
Current rating: 2A AC DC
 Voltage rating: 250V AC DC
 Temperature rating: -25°C~+85°C
 Contact resistance: 20mΩ max.
 Insulation resistance: 1000MΩ min.
 Withstanding voltage: 500V AC/min.

Standards

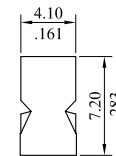
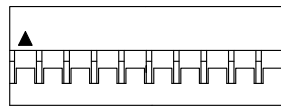
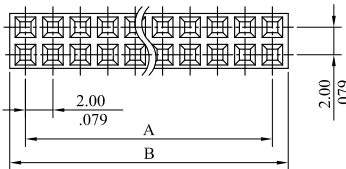
Recognized No. E82349
 RoHS Compliant



2065 Series 2.00mm (.079") Housing



2066 Series 2.00mm (.079") Dual Row Housing



Features

2065&2066 Housing:
 2065 available in 2~30 circuits
 2066 available in 4~44 circuits
 Material: Thermoplastic UL94V-1
 Color: Black
 Mates with Leoco 2018 and 2028 header

P/N 2065S ** 0000
1

1.No.of circuits

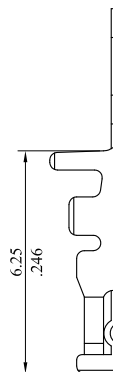
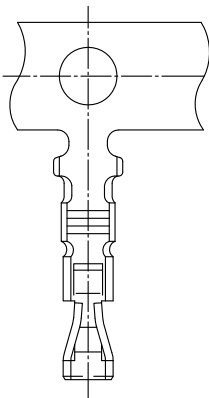
A=2.0mm(.079")x No.of spaces
 B=A+2.26mm(.089")

P/N 2066S ** 0000
1

1.No.of circuits

A=2.0mm(.079")x No.of spaces
 B=A+2.30mm(.091")

2065T Crimping Terminal



Features

2065 Terminal:
 Dual beam contact
 Wire range: AWG 26~30
 Phosphor bronze/Gold flash

P/N 2065TPBU00 *
1

1.Circuits range
 0=Used in between 10 circuits
 and 44 circuits
 1=Used in between 2 circuits
 and 8 circuits

Package: 10K PCS/Reel