

# 1.00mm (.039") Wire to Board Connector

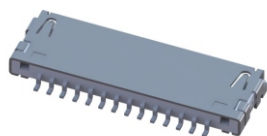
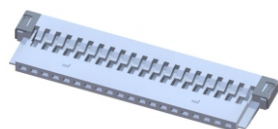
Unit:  $\frac{\text{mm}}{\text{Inch}}$

## Specifications

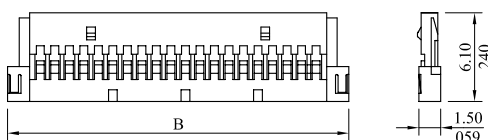
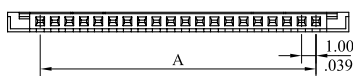
Current rating: 1A AC DC  
 Voltage rating: 50V AC DC  
 Temperature rating: -25°C ~ +85°C  
 Contact resistance: 20mΩ max.  
 Insulation resistance: 100MΩ min.  
 Withstanding voltage: 500V AC/min.

## Standards

RoHS Compliant



## 1000 Series 1.00mm (.039") Housing



## Features

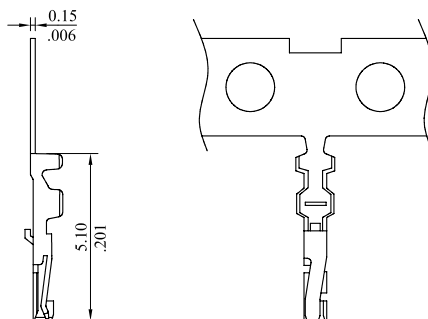
1000 Housing:  
 Available in 8, 14, 20 and 30 circuits  
 Nylon 6/6 UL94V-0

**P/N 1000S \*\* 0000**

**I**  
 1.No.of circuits

A=1.0mm(.039") x No.of spaces  
 B=A+4.5mm(.177")

## 1000T Crimping Terminal



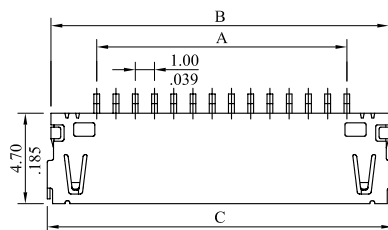
## Features

1000 Terminal:  
 Wire range: AWG 28 ~ 32  
 Phosphor bronze /Gold flash

**P/N 1000TPBU000**

Package: 15K PCS/Reel

## 1000 Series 1.00mm (.039") Header SMT Type



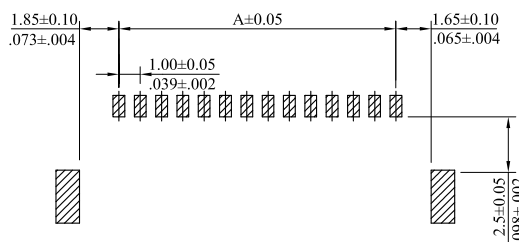
## Features

1000 Header:  
 Available in 8, 14, 20 and 30 circuits  
 Wafer: Nylon 6T UL94V-0  
 Pin & Shell: Phosphor bronze

**P/N 1000P \*\* MH00**

**I**  
 1.No.of circuits

A=1.0mm(.039") x No.of spaces  
 B=A+4.55mm(.179")  
 C=A+4.95mm(.195")



Recommended PCB Layout

# 1.00mm (.039") Wire to Board Connector

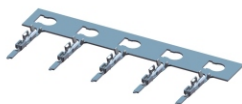
Unit:  $\frac{\text{mm}}{\text{Inch}}$

## Specifications

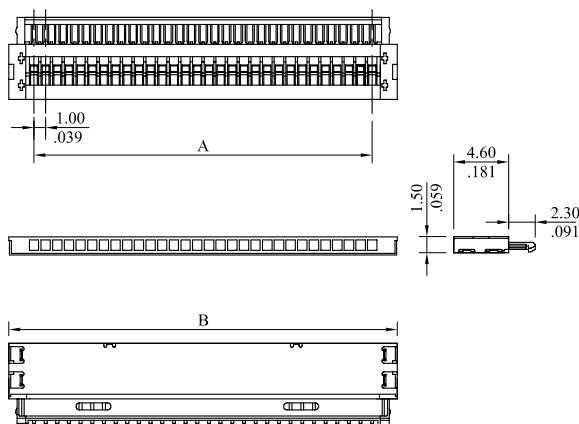
Current rating: 1A AC DC  
 Voltage rating: 200V AC DC  
 Temperature rating: -40°C ~ +80°C  
 Contact resistance: 40mΩ max.  
 Insulation resistance: 100MΩ min.  
 Withstanding voltage: 500V AC/min.

## Standards

RoHS Compliant



## 1050 Series 1.00mm (.039") Housing



## Features

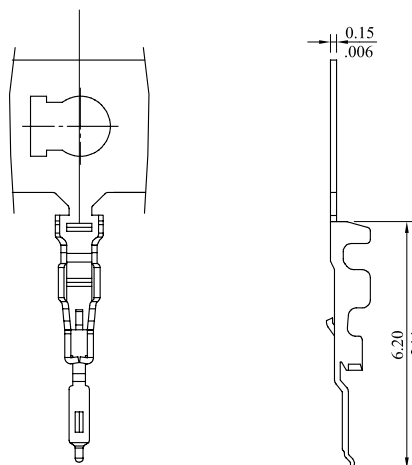
1050 Housing:  
 Available in 20 and 30 circuits  
 PA46 UL94V-0  
 Shell: Copper alloy/Tin plated

P/N 1050S \*\* 0000  
 I

I. No. of circuits

$A = 1.00 \text{ mm} (.039 \text{ inch}) \times \text{No. of spaces}$   
 $B = A + 4.3 \text{ mm} (.169 \text{ inch})$

## 1050T Crimping Terminal



## Features

1050 Terminal:  
 Wire range: AWG 30~32  
 Phosphor bronze/Gold flash

P/N 1050TPBU000

Package: 15K PCS/Reel

# 1.00mm (.039") Wire to Board Connector

Unit:  $\frac{\text{mm}}{\text{Inch}}$

## Specifications

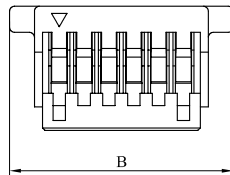
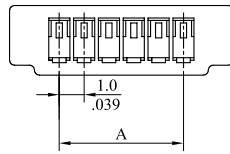
Current rating: 1A AC DC  
 Voltage rating: 50V AC DC  
 Temperature rating: -25°C ~ +85°C  
 Contact resistance: 20mΩ max.  
 Insulation resistance: 100MΩ min.  
 Withstanding voltage: 500V AC/min.

## Standards

Recognized No. E82349  
 RoHS Compliant



## 1010 Series 1.00mm (.039") Single Row Housing



## Features

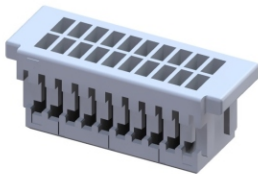
1010 Housing:  
 Available in 2~20 circuits  
 PBT UL94V-0

P/N 1010S  $\frac{**}{1}$  0000

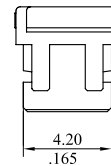
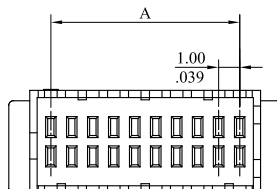
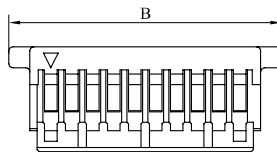
1. No. of circuits

A=1.0mm (.039") x No. of spaces

B=A+4.0mm (.157")



## 1020 Series 1.00mm (.039") Dual Row Housing



## Features

1020 Housing:  
 Available in 20, 30, 40 and 50 circuits  
 PBT UL94V-0

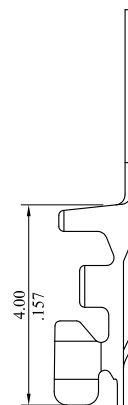
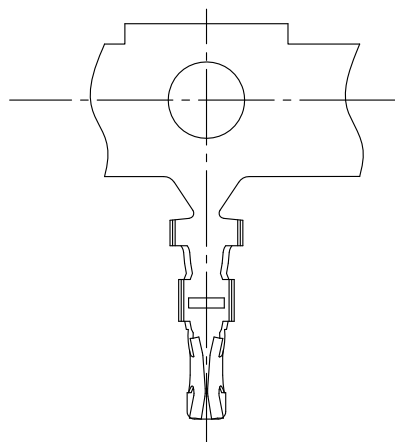
P/N 1020S  $\frac{**}{1}$  0000

1. No. of circuits

A=1.0mm (.039") x No. of spaces

B=A+4.0mm (.157")

## 1010T Crimping Terminal



## Features

1010 Terminal:  
 Wire range: AWG 28~32  
 Phosphor bronze

P/N 1010TPB  $\frac{*}{1}$  000

1. Plating:

0= Tin plated 120u" min. over  
 30u" min. nickel overall

U= Gold flash over  
 30u" min. nickel overall

Package: 15K PCS/Reel

# 1.00mm (.039") Wire to Board Connector

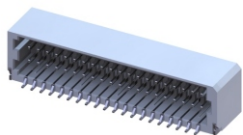
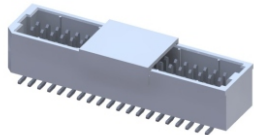
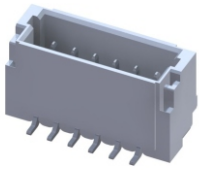
Unit:  $\frac{\text{mm}}{\text{Inch}}$

## Specifications

Current rating: 1A AC DC  
 Voltage rating: 50V AC DC  
 Temperature rating: -25°C ~ +85°C  
 Contact resistance: 20mΩ max.  
 Insulation resistance: 100MΩ min.  
 Withstanding voltage: 500V AC/min.

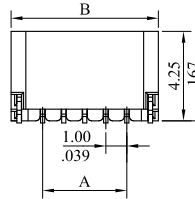
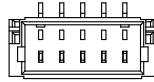
## Standards

Recognized No. E82349  
 RoHS Compliant

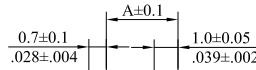
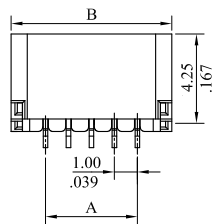
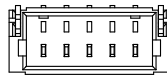


## 1010 Series 1.00mm (.039") Header

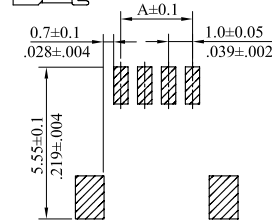
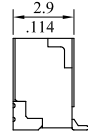
Straight (V version)



Right Angle (H version)



Recommended PCB Layout

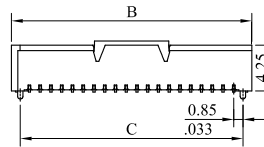
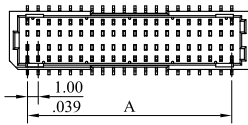


Recommended PCB Layout

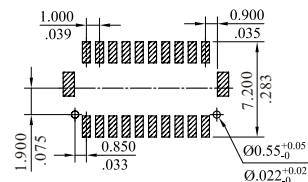
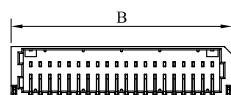
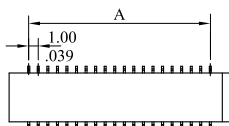


## 1020 Series 1.00mm (.039") Header

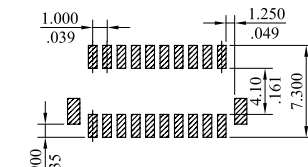
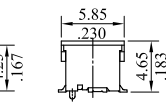
Straight (V version)



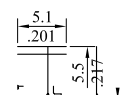
Right Angle (H version)



Recommended PCB Layout



Recommended PCB Layout



## Features

1010 Header:  
 Available in 2~20 circuits  
 Wafer: Nylon 6T UL94V-0  
 Pin: Brass/Tin plated

P/N 1010P \*\*  $\frac{M}{1}$   $\frac{M}{2}$   $\frac{M}{3}$  \* 00

- 1.No. of circuits
- 2.M=SMT type
3. H=Right angle type  
V=Straight type

A=1.0mm(.039") x No. of spaces  
 B=A+3.0mm(.188")

## Features

1020 Header:  
 Available in 20, 30, 40 and 50 circuits  
 Wafer: Nylon 6T UL94V-0  
 Pin: Brass/Tin plated

P/N 1020P \*\*  $\frac{M}{1}$   $\frac{M}{2}$   $\frac{M}{3}$  \* 00

- 1.No. of circuits
- 2.M=SMT type
- 3.V=Straight type  
J=Have pillar straight type

A=1.0mm(.039") x No. of spaces  
 B=A+3.3mm(.130")  
 C=A+1.7mm(.067")

P/N 1020P \*\*  $\frac{M}{1}$   $\frac{M}{2}$   $\frac{M}{3}$  \* 00

- 1.No. of circuits
- 2.M=SMT type
3. H=Right angle type

A=1.0mm(.039") x No. of spaces  
 B=A+4.1mm(.161")

# 1.25mm (.049") Wire to Board Connector

Unit:  $\frac{\text{mm}}{\text{Inch}}$

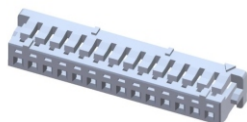
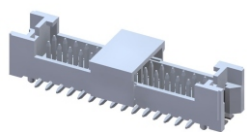
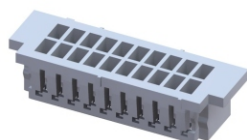
## Specifications

Current rating: 1A AC DC  
 Voltage rating: 125V AC DC  
 Temperature rating: -25°C ~ +85°C  
 Contact resistance: 30mΩ max.  
 Insulation resistance: 100MΩ min.  
 Withstanding voltage: 500V AC/min.

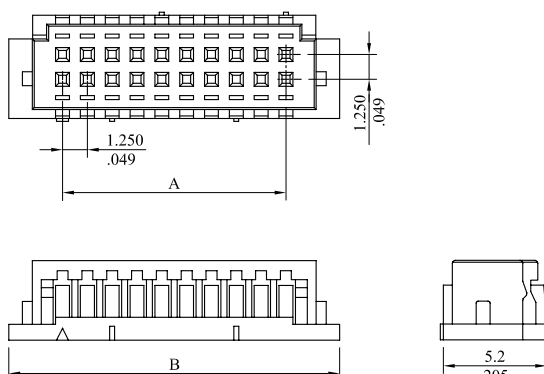
## Standards

Recognized No. E82349 (1252)

RoHS Compliant



## 1262 Series 1.25mm (.049") Dual Row Housing



## Features

1262 Housing:  
 Available in 10, 20, 30 and 40 circuits  
 Nylon 6/6 UL94V-0

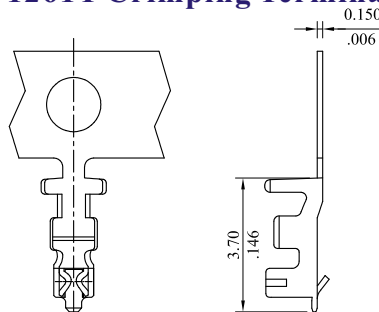
P/N 1262S \*\* 0000  
 I

1. No. of circuits

A=1.25mm(.049")x No. of spaces

B=A+5.4mm(.213")

## 1261T Crimping Terminal



## Features

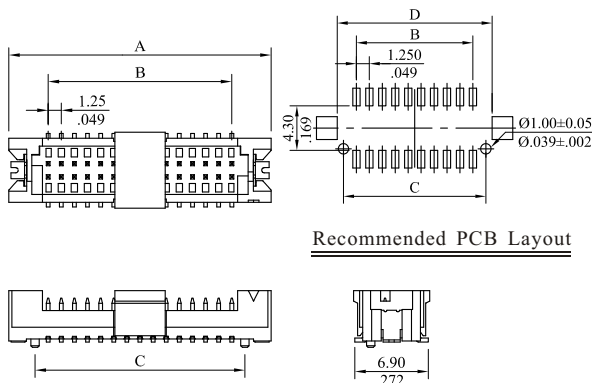
1261 Terminal:  
 Wire ang: AWG 26~30  
 Phosphor bronze

P/N 1261TPB \* 000  
 I

1. Plating  
 0= Tin plated 120u" min. over 30u" min. nickel overall  
 U= Gold flash over 30u" min. nickel overall

Package: 15K PCS/Reel

## 1262 Series 1.25mm (.049") Dual Row Header



## Features

1262 Header:  
 Available in 10, 20, 30 and 40 circuits  
 Housing: Nylon 6T UL94V-0  
 Cap: Nylon 6T UL94V-0  
 Pin: Copper alloy

P/N 1262P \*\* 0 0 \* B  
 I 2 3 4 5

1. No. of circuits  
 2. 0= Dual row SMT type  
 3. 0= Tin plated  
 4. Packing  
 0= With tube  
 1= With tape & reel  
 5. B= With guide post

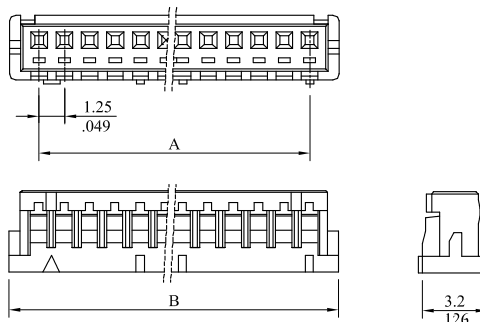
A=B+7.1mm(.280")

B=1.25mm(.049")x No. of spaces

C=B+2.5mm(.098")

D=B+3.7mm(.146")

## 1252 Series 1.25mm (.049") Single Row Housing



## Features

1252 Housing:  
 Available in 2~15 circuits  
 Nylon 6/6 UL94V-0

P/N 1252S \*\* 0000  
 I

1. No. of circuits

A=1.25mm(.049")x No. of spaces

B=A+2.9mm(.114")

# 1.25mm (.049") Wire to Board Connector

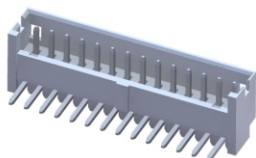
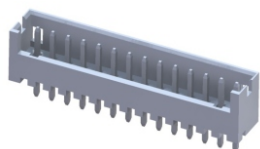
Unit:  $\frac{\text{mm}}{\text{Inch}}$

## Specifications

Current rating: 1A AC DC  
 Voltage rating: 125V AC DC  
 Temperature rating: -25°C ~ +85°C  
 Contact resistance: 30mΩ max.  
 Insulation resistance: 100MΩ min.  
 Withstanding voltage: 500V AC/min.

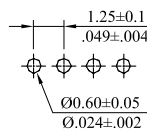
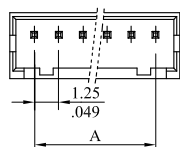
## Standards

Recognized No. E82349  
 RoHS Compliant

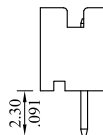
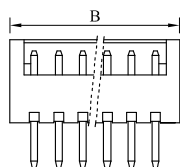


## 1252 Series 1.25mm (.049") Single Row Header

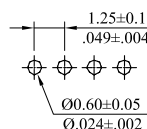
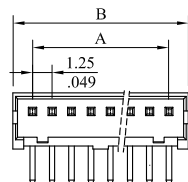
Straight (V version)



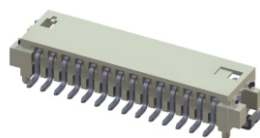
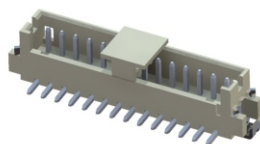
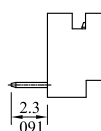
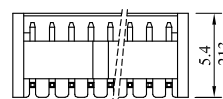
Recommended PCB Layout



Right Angle (H version)

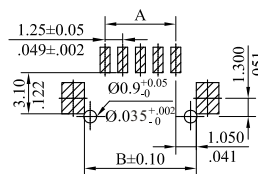
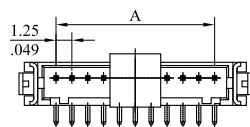


Recommended PCB Layout

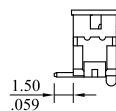
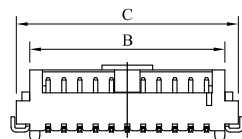


## 1252 Series 1.25mm (.049") Single Row Header SMT Type

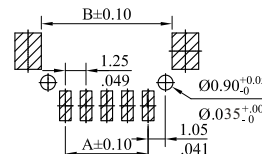
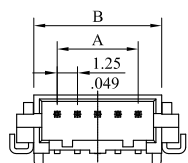
Straight (V version)



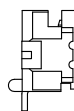
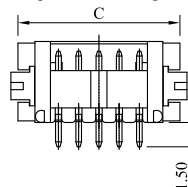
Recommended PCB Layout



Right Angle (H version)



Recommended PCB Layout



## Features

1252 Header:  
 Available in 2~15 circuits  
 Housing: Nylon 6T UL94V-0  
 0.35mm (.014") square pin

P/N 1252P  $\frac{I}{1}$   $\frac{2}{2}$  \* 000

- No. of circuits
- V= Straight type
- H= Right angle type

A= 1.25mm (.049") x No. of spaces  
 B= A+2.5mm (.098")

## Features

1252 Header:  
 Available in 2~15 circuits  
 Housing: Nylon 6T UL94V-0  
 0.35mm (.014") square pin

P/N 1252P  $\frac{I}{1}$   $\frac{2}{2}$   $\frac{3}{3}$  \* M \* 00

- No. of circuits
- M= SMT type
- V= Straight type
- H= Right angle type

A= 1.25mm (.049") x No. of spaces  
 B= A+2.9mm (.114")  
 C= A+5.0mm (.197")

# 1.25mm (.049") Wire to Board Connector

Unit:  $\frac{\text{mm}}{\text{Inch}}$

## Specifications

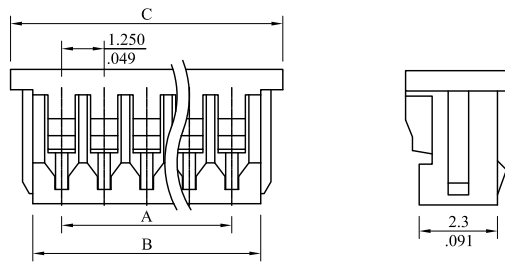
Current rating: 1A AC DC  
 Voltage rating: 125V AC DC  
 Temperature rating: -40°C ~ +85°C  
 Contact resistance: 20mΩ max.  
 Insulation resistance: 100MΩ min.  
 Withstanding voltage: AC 250V/min.

## Standards

Recognized No. E82349

RoHS Compliant

## 1254 Series 1.25mm (.049") Housing



## Features

1254 Housing:  
 Available in 2~15 circuits  
 Thermoplastic UL94V-0

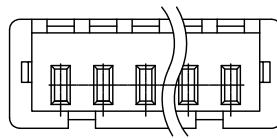
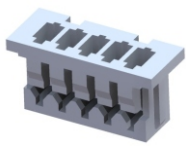
P/N 1254S \*\* 0000  
 I

1.No.of circuits

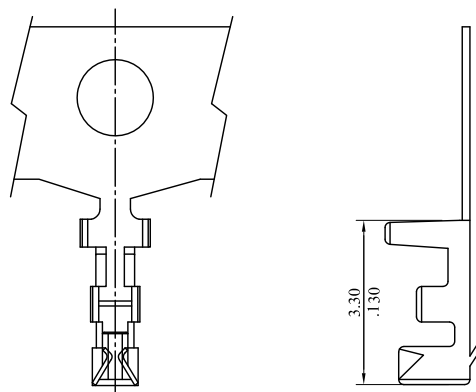
A=1.25mm(.049")x No.of spaces

B=A+1.7mm(.069")

C=A+3.0mm(.118")



## 1254T Crimping Terminal



## Features

1254 Terminal:  
 Wire range: AWG 28~32  
 Mates with 0.30mm(.011") pin  
 Phosphor bronze/Tin plated

P/N 1254TPB0000

Package: 15K PCS/Reel

# 1.25mm (.049") Wire to Board Connector

Unit:  $\frac{\text{mm}}{\text{Inch}}$

## Specifications

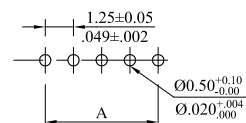
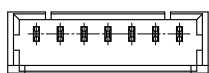
Current rating: 1A AC DC  
 Voltage rating: 125V AC DC  
 Temperature rating: -40°C~+85°C  
 Contact resistance: 20mΩ max.  
 Insulation resistance: 100MΩ min.  
 Withstanding voltage: AC 250V/min.

## Standards

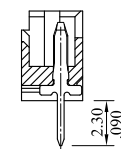
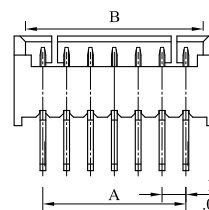
Recognized No. E82349  
 RoHS Compliant

## 1254 Series 1.25mm (.049") Header

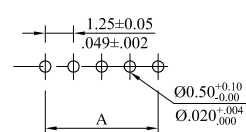
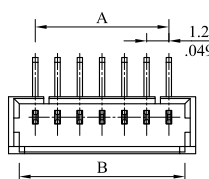
Straight (V version)



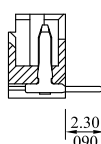
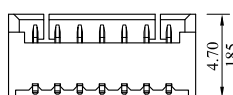
Recommended PCB Layout



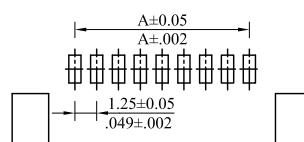
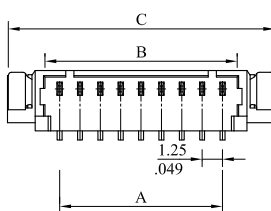
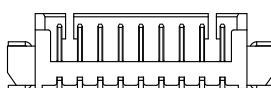
Right Angle (H version)



Recommended PCB Layout

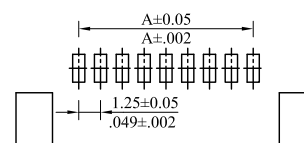
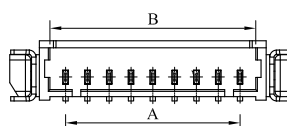
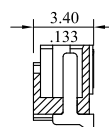
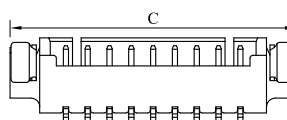


SMT Type (V version)



Recommended PCB Layout

SMT Type (H version)



Recommended PCB Layout

## Features

1254 Header:  
 Available in 2~15 circuits  
 Thermoplastic UL94V-0  
 0.30mm(.011")pin

**P/N 1254P \*\* V000**

**1 2**

- 1.No.of circuits
2. V=Straight type  
H=Right angle type

**P/N 1254P \*\* M \* \* \***

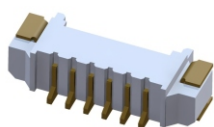
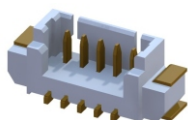
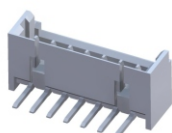
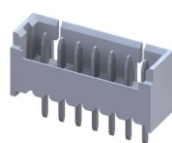
**1 2 3 4 5**

- 1.No.of circuits
- 2.M=SMT type
- 3.V=Straight type  
H=Right angle type
- 4.Plating  
0=Tin plated 120u"min. over  
30u"min. nickel overall  
U= Gold flash over  
30u"min. nickel overall
- 5.Packing  
0=Tape & Reel  
1=Tube

A=1.25mm(.049")x No.of spaces

B=A+1.80mm(.071")

C=A+6.4mm(.252")



# 1.25mm (.049") Wire to Board Connector

Unit:  $\frac{\text{mm}}{\text{Inch}}$

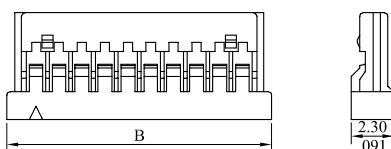
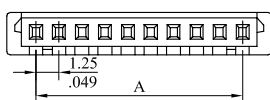
## Specifications

Current rating: 1A AC DC  
 Voltage rating: 50V AC DC  
 Temperature rating: -25°C ~ +85°C  
 Contact resistance: 30mΩ max.  
 Insulation resistance: 500MΩ min.  
 Withstanding voltage: 500V AC/min.

## Standards

RoHS Compliant

## 1258 Series 1.25mm (.049") Housing



## Features

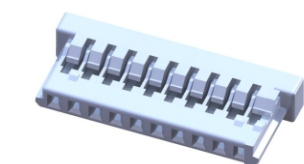
1258 Housing:  
 Available in 2~30 circuits  
 Nylon 6/6 UL 94V-0

P/N 1258S \*\* 0000  
 I

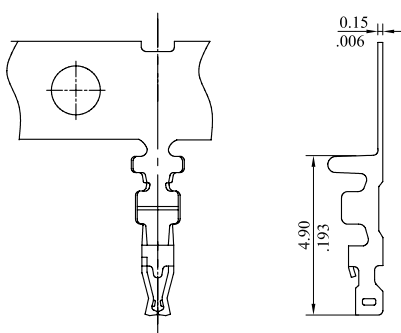
1.No.of circuits

A=1.25mm(.049") x No.of spaces

B=A+3.2mm(.126")



## 1258T Crimping Terminal

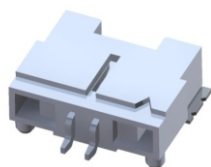


## Features

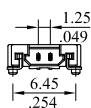
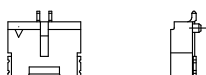
1258 Terminal:  
 Phosphor bronze/Tin plated  
 Wire range:AWG 26~32

P/N 1258TPB0000

Package:10K PCS/Reel



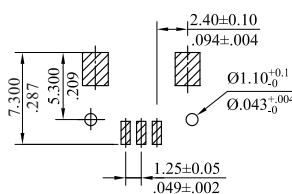
## 1258 Series 1.25mm (.049") Header SMT Type



2P



3P



Recommended PCB Layout

## Features

1258 Header:  
 Available in 2~30 circuits  
 Wafer:Nylon 6T UL94V-0  
 Pin:Brass

P/N 1258P \*\* M \* 00  
 I 2

1.No.of circuits

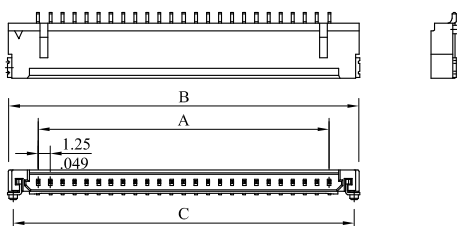
2. H=Right angle type

P=Right angle type with pillar

A=1.25mm(.049") x No.of spaces

B=A+6.2mm(.244")

C=A+5.2mm(.205")



4~30P

# 1.25mm (.049" ) Wire to Board Connector

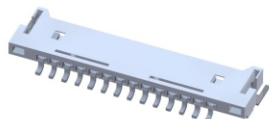
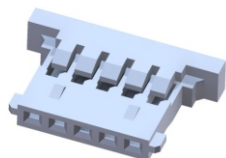
Unit:  $\frac{\text{mm}}{\text{Inch}}$

## Specifications

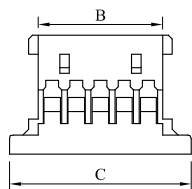
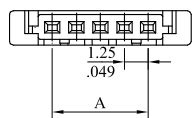
Current rating: 1A AC DC  
 Voltage rating: 100V AC DC  
 Temperature rating: -25°C ~ +85°C  
 Contact resistance: 20mΩ max.  
 Insulation resistance: 500MΩ min.  
 Withstanding voltage: 500V AC/min.

## Standards

RoHS Compliant



## 1259 Series 1.25mm (.049") Housing



## Features

1259 Housing:  
 Available in 2~30 circuits  
 Nylon 6/6 UL 94V-0

P/N 1259S \*\* 0000  
 I

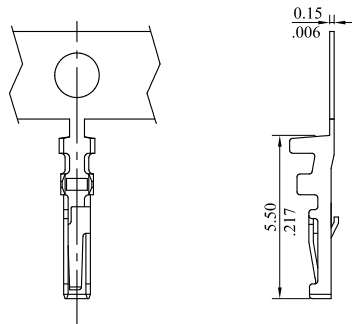
1.No.of circuits

A=1.25mm (.049") x No.of spaces

B=A+1.47mm (.058")

C=A+4.47mm (.176")

## 1259T Crimping Terminal



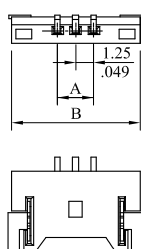
## Features

1259 Terminal:  
 Wire range: AWG 28~32  
 Phosphor bronze/ Gold flash

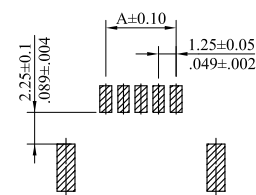
P/N 1259TPBU000

Package: 15K PCS/Reel

## 1259 Series 1.25mm (.049") Header SMT Type



2~3P



Recommended PCB Layout

## Features

1259 Header:  
 Available in 2~30 circuits  
 Wafer: Nylon 6T UL94V-0  
 Contact: Brass/Tin plated

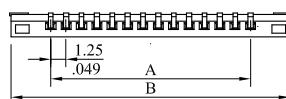
P/N 1259P \*\* M H 00  
 I 2

1.No.of circuits

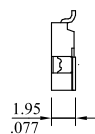
2.H=Right angle type

A=1.25mm (.049") x No.of spaces

B=A+6.4mm (.252")



4~30P



# 1.50mm (.059") Wire to Board Connector

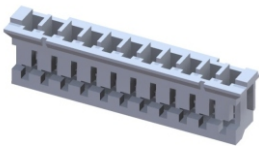
Unit:  $\frac{\text{mm}}{\text{Inch}}$

## Specifications

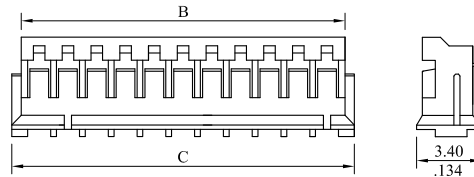
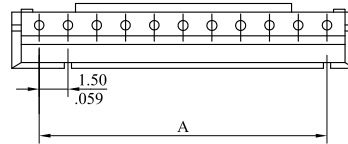
Current rating: 1A AC DC  
 Voltage rating: 50V AC DC  
 Temperature rating: -25°C~+85°C  
 Contact resistance: 20mΩ max.  
 Insulation resistance: 500MΩ min.  
 Withstanding voltage: 500V AC/min.

## Standards

RoHS Compliant



## 1510 Series 1.50mm (.059") Housing



## Features

1510 Housing:  
 Available in 2~13 circuits  
 Nylon 66 UL94V-0

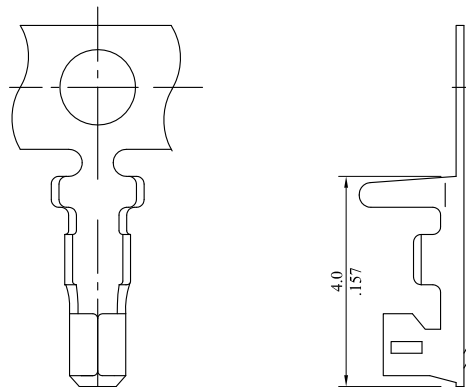
**P/N 1510S \*\* 0000**  
**I**

1.No. of circuits

A=1.5mm(.059")x No. of spaces  
 B=A+1.8mm(.071")  
 C=A+3.0mm(.118")



## 1510T Crimping Terminal



## Features

1510 Terminal:  
 Phosphor bronze/Tin plated  
 Wire range: AWG 26~32

**P/N 1510TPB0000**

Package: 10K PCS/Reel

# 1.50mm (.059") Wire to Board Connector

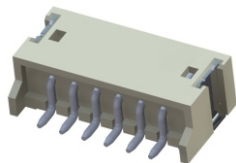
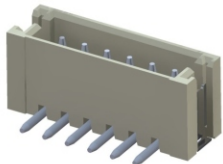
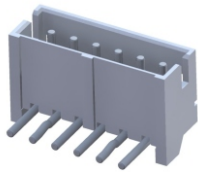
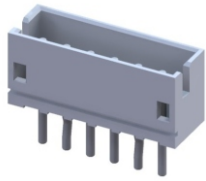
Unit:  $\frac{\text{mm}}{\text{Inch}}$

## Specifications

Current rating: 1A AC DC  
 Voltage rating: 50V AC DC  
 Temperature rating: -25°C~+85°C  
 Contact resistance: 20mΩ max.  
 Insulation resistance: 500MΩ min.  
 Withstanding voltage: 500V AC/min.

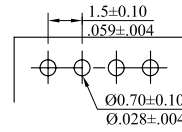
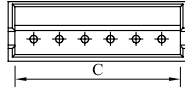
## Standards

RoHS Compliant

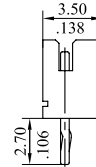
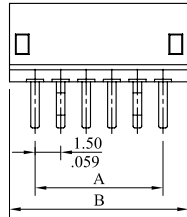


## 1511 Series 1.50mm (.059") Header

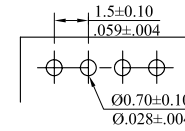
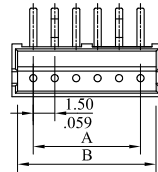
Straight (V version)



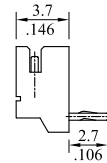
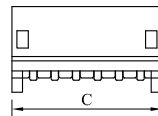
Recommended PCB Layout



Right Angle (H version)



Recommended PCB Layout



## Features

1511 Header:  
 Nylon 66 UL 94V-0  
 Brass/Tin plated  
 0.50 (.002") square pin  
 PCB thickness 0.6~1.2mm

**P/N 1511P  $\frac{**}{1} \frac{*}{2} \frac{000}{2}$**

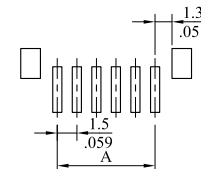
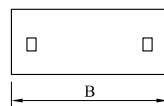
- No. of circuits
- V=Straight type  
H=Right angle type

A=1.5mm (.059") x No. of spaces  
 B=A+3.0mm (.118")  
 C=A+2.0mm (.079")

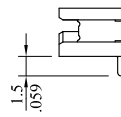
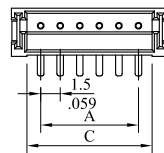
A=1.5mm (.059") x No. of spaces  
 B=A+2.2mm (.087")  
 C=A+3.0mm (.118")

## 1511 Series 1.50mm (.059") Header SMT Type

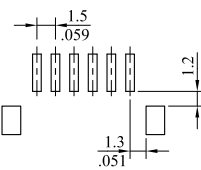
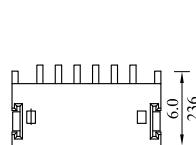
Straight (V version)



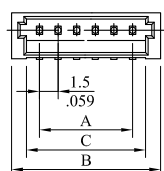
Recommended PCB Layout



Right Angle (H version)



Recommended PCB Layout



## Features

1511 Header:  
 Nylon 6T UL 94V-0  
 Brass/Tin plated  
 0.50 (.002") square pin

**P/N 1511P  $\frac{**}{1} \frac{M}{2} \frac{*}{3} \frac{00}{3}$**

- No. of circuits
- M=SMT type
- V=Straight type  
H=Right angle type

A=1.5mm (.059") x No. of spaces  
 B=A+4.5mm (.177")  
 C=A+2.1mm (.083")

# 2.00mm (.079") Wire to Board Connector

Unit:  $\frac{\text{mm}}{\text{Inch}}$

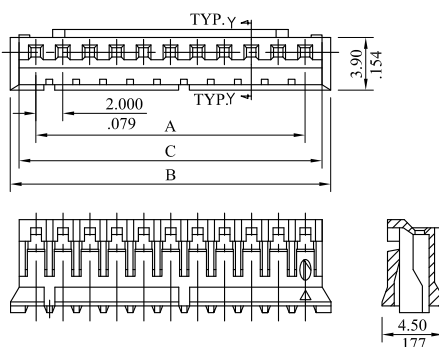
## Specifications

Current rating: 2A AC DC  
 Voltage rating: 125V AC DC  
 Temperature rating: -25°C~+105°C  
 Contact resistance: 20mΩmax.  
 Insulation resistance: 1000MΩmin.  
 Withstanding voltage: 500V AC/min.

## Standards

- Recognized No. E82349
- Certified No. LR65731
- RoHS Compliant

## 2010 Series 2.00mm (.079") Housing



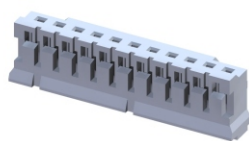
## Features

2010 Housing:  
 Available in 2~20 circuits  
 Nylon 6/6 UL94V-0  
 Low profile  
 With molded locking ramp

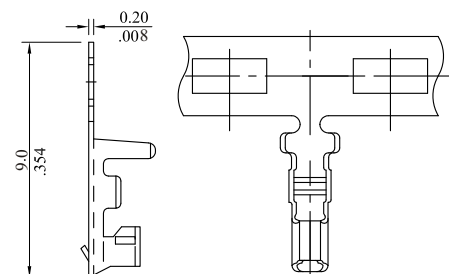
P/N 2010S \*\* 0000  
**I**

1. No. of circuits

A=2.0mm(.079")x No. of spaces  
 B=A+3.8mm (.150")  
 C=A+2.5mm(.098")



## 2033T Crimping Terminal

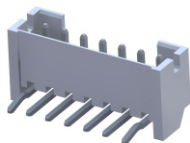
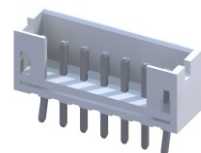


## Features

2033 Terminal:  
 Dual beam contact  
 Wire range: AWG 24~30  
 Mates with 0.5mm (0.20") square pin  
 Phosphor bronze/Tin plated

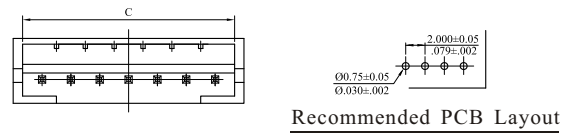
P/N 2033TPB0000

Package: 10K PCS/Reel



## 2011 Series 2.00mm (.079") Header

Straight (V version)



## Features

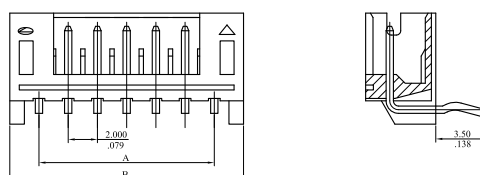
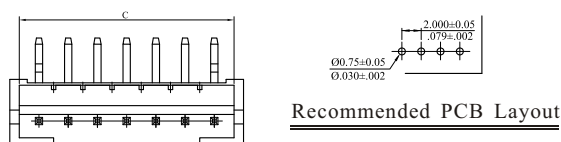
2011 Header:  
 Available in 2~20 circuits  
 Nylon 6/6 UL94V-0  
 0.5mm (0.20") square pin  
 Low profile  
 Fully shrouded  
 With polarized slot  
 PCB thickness 1.6mm

P/N 2011P \*\*\* 000  
**I 2**

1. No. of circuits  
 2. V= Straight type  
 H= Right angle type

A=2.0mm(.079")x No. of spaces  
 B=A+4.0mm (.157")  
 C=A+2.7mm (.106")

Right Angle (H version)



# 2.00mm (.079") Board In Connector

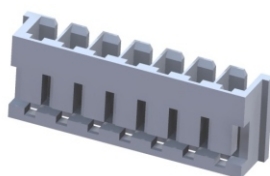
Unit:  $\frac{\text{mm}}{\text{Inch}}$

## Specifications

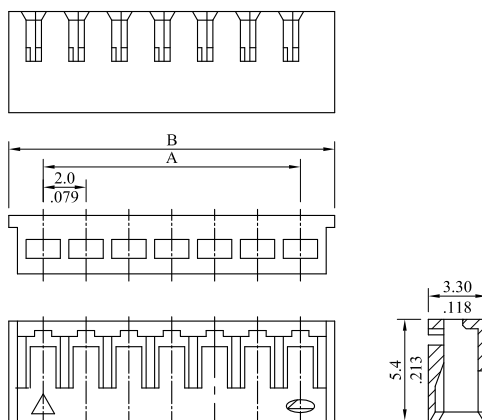
Current rating: 2A AC DC  
 Voltage rating: 250V AC DC  
 Temperature rating: -40°C ~ +105°C  
 Contact resistance: 20mΩ max.  
 Insulation resistance: 1000MΩ min.  
 Withstanding voltage: 1000V AC/min.

## Standards

Recognized No. E82349  
 RoHS Compliant



## 2012 Series 2.00mm (.079") Board In Connector



## Features

2012 Housing:  
 Available in 2~20 circuits  
 Low profile  
 Nylon 6/6 UL94V-0  
 PCB thickness 1.6mm

P/N 2012S \*\* 0000  
 I

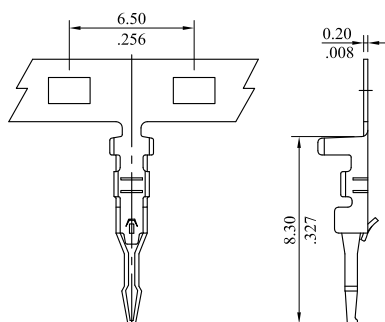
1. No. of Circuits

A=2.0 (.079") x No. of spaces  
 B=A+3.5mm (.138")



## 2012T Series 2.00mm (.079") Board In Terminal

2012TPB0V0A



## Features

2012 Terminal:  
 Compliant tip holes terminal to PCB  
 Direct solder on PCB

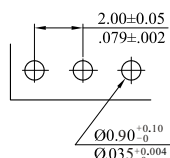
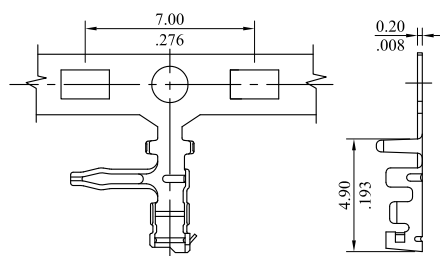
P/N 2012TPB0V0A

Phosphor bronze/Tin plated  
 Wire range: AWG 24~28  
 Package: 10K PCS / Reel

P/N 2012TPB0H0A

Phosphor bronze/Tin plated  
 Wire range: AWG 24~30  
 Package: 10K PCS / Reel

2012TPB0H0A



Recommended PCB Layout

# 2.00mm (.079") Wire to Board Connector

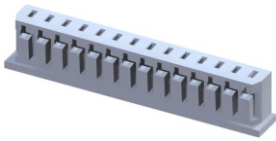
Unit:  $\frac{\text{mm}}{\text{Inch}}$

## Specifications

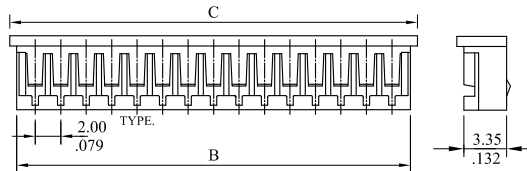
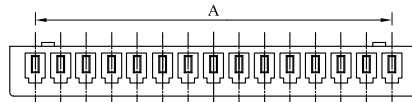
Current rating: 2A AC DC  
 Voltage rating: 125V AC DC  
 Temperature rating: -20°C~+85°C  
 Contact resistance: 20mΩ max.  
 Insulation resistance: 1000MΩ min.  
 Withstanding voltage: 800V AC/min.

## Standards

Recognized No. E82349  
 RoHS Compliant



## 2015 Series 2.00mm (.079") Housing



## Features

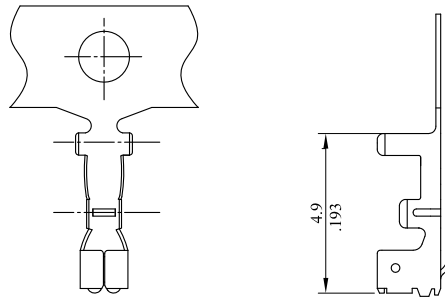
2015 Housing:  
 Available in 2~15 circuits  
 Polarized with locking ribs  
 Insulator PBT UL94V-0

P/N 2015S  $\frac{**}{I}$  0000

1.No.of circuits

A=2.0mm(.079")x No.of spaces  
 B=A+2.9mm(.114")  
 C=A+4.0mm(.157")

## 2015T Crimping Terminal



## Features

2015 Terminal  
 Wire range: AWG 24~28  
 Phosphor bronze/Tin plated

P/N 2015TPB0000

Package: 10K PCS/Reel

# 2.00mm (.079") Wire to Board Connector

Unit:  $\frac{\text{mm}}{\text{Inch}}$

## Specifications

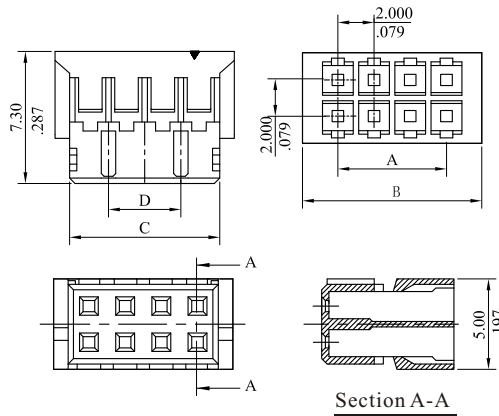
Current rating: 2A AC DC  
 Voltage rating: 250V AC DC  
 Temperature rating: -25°C~+85°C  
 Contact resistance: 20mΩ max.  
 Insulation resistance: 1000MΩ min.  
 Withstanding voltage: 500V AC/min.

## Standards

Recognized No. E82349

RoHS Compliant

## 2020 Series 2.00mm (.079") Housing



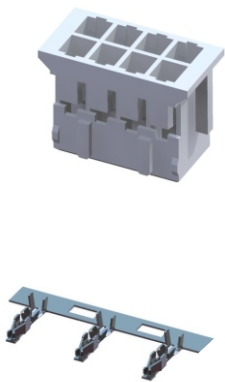
## Features

2020 Housing:  
 Available in 6~34 circuits  
 Polarized with locking ribs  
 Nylon 66 UL94V-0

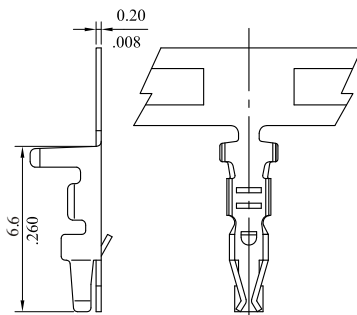
P/N 2020S  $\frac{**}{1}$   $\frac{000}{2}$  \*

- No. of circuits
- Housing color option  
 0=White 1=Black

A=2.00mm(.079")x No. of spaces  
 B=A+3.9mm(.154")  
 C=A+2.3mm(.091")  
 D=A-2.0mm(.079")



## 2020T Crimping Terminal



## Features

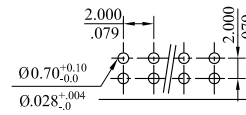
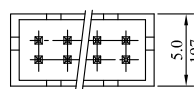
2020 Terminal:  
 Dual beam contact  
 Wire range: AWG 20~28  
 Phosphor bronze/Tin plated

P/N 2020TPB0000

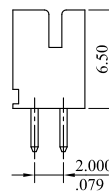
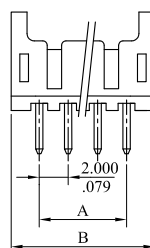
Package: 10K PCS/Reel

## 2020 Series 2.00mm (.079") Header

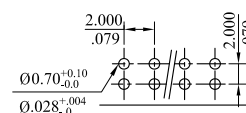
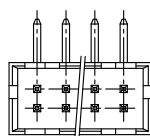
Straight (V version)



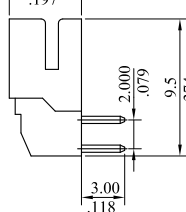
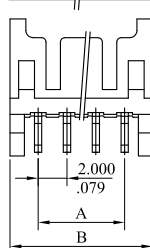
Recommended PCB Layout



Right Angle (H version)



Recommended PCB Layout



## Features

2020 Header:  
 Available in 6~34 circuits  
 Polarization slots  
 Nylon 66 UL94V-0  
 0.50mm(.020") square pin  
 Applicable PC board  
 thickness: 1.6mm

P/N 2020P  $\frac{**}{1}$   $\frac{000}{2}$  \*

- No. of circuits
- V= Straight type  
 H= Right angle type

A=2.00mm(.079")x No. of spaces  
 B=A+3.90mm(.154")



# 2.00mm (.079") Wire to Board Connector

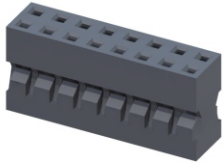
Unit:  $\frac{\text{mm}}{\text{Inch}}$

## Specifications

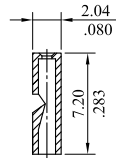
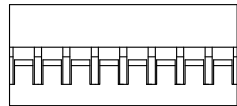
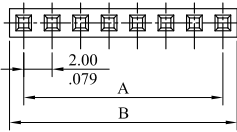
Current rating: 2A AC DC  
 Voltage rating: 250V AC DC  
 Temperature rating: -25°C~+85°C  
 Contact resistance: 20mΩ max.  
 Insulation resistance: 1000MΩ min.  
 Withstanding voltage: 500V AC/min.

## Standards

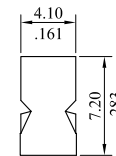
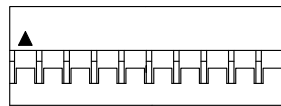
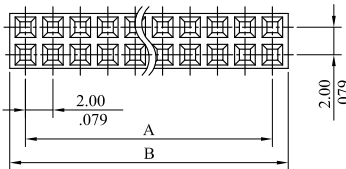
Recognized No. E82349  
 RoHS Compliant



## 2065 Series 2.00mm (.079") Housing



## 2066 Series 2.00mm (.079") Dual Row Housing



## Features

2065&2066 Housing:  
 2065 available in 2~30 circuits  
 2066 available in 4~44 circuits  
 Material: Thermoplastic UL94V-1  
 Color: Black  
 Mates with Leoco 2018 and 2028 header

**P/N 2065S \*\* 0000**  
**1**

1.No.of circuits

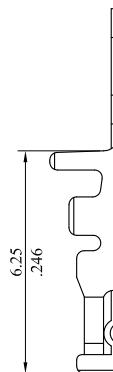
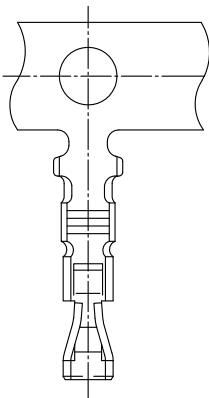
A=2.0mm(.079")x No.of spaces  
 B=A+2.26mm(.089")

**P/N 2066S \*\* 0000**  
**1**

1.No.of circuits

A=2.0mm(.079")x No.of spaces  
 B=A+2.30mm(.091")

## 2065T Crimping Terminal



## Features

2065 Terminal:  
 Dual beam contact  
 Wire range: AWG 26~30  
 Phosphor bronze/Gold flash

**P/N 2065TPBU00 \***  
**1**

1.Circuits range  
 0=Used in between 10 circuits  
 and 44 circuits  
 1=Used in between 2 circuits  
 and 8 circuits

Package: 10K PCS/Reel

# 2.50mm (.098") Wire to Board Connector

Unit:  $\frac{\text{mm}}{\text{Inch}}$

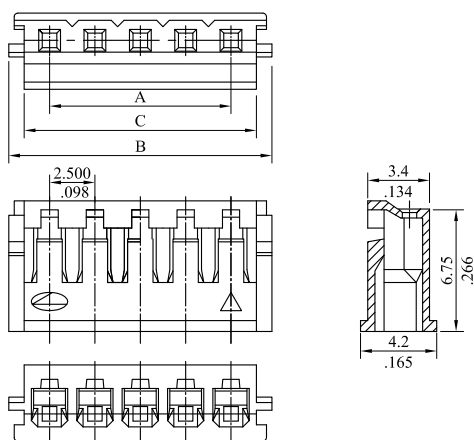
## Specifications

Current rating: 3A AC DC  
 Voltage rating: 250V AC DC  
 Temperature rating: -40°C~+105°C  
 Contact resistance: 20mΩ max.  
 Insulation resistance: 1000MΩ min.  
 Withstanding voltage: 800V AC/min.

## Standards

Recognized No. E82349  
 Certified No. LR65731  
 RoHS Compliant

## 2420 Series 2.50mm (.098") Housing



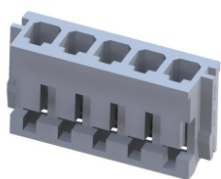
## Features

2420 Housing:  
 Available in 2~15 circuits  
 Low profile  
 Polarized with locking ribs  
 Nylon 6/6 UL94V-0

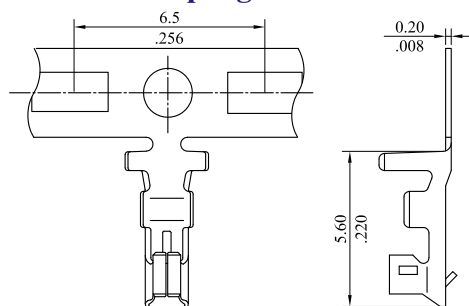
P/N 2420S \*\* 000  $\frac{*}{1 \ 2}$

- No. of circuits
- Housing color options  
 0=White 3=Red

A=2.50mm(.098")x No. of spaces  
 B=A+4.5mm(.177")  
 C=A+2.80mm(.110")



## 2453T Crimping Terminal



## Features

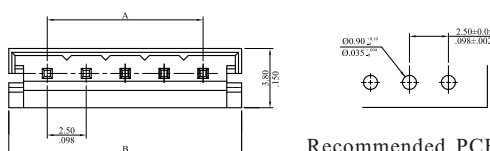
2453 Terminal:  
 Low profile  
 Dual beam contact  
 Wire range: AWG 22~28  
 Mates with 0.64mm(.025") square pin  
 Phosphor bronze/Tin plated

P/N 2453TPB00V1

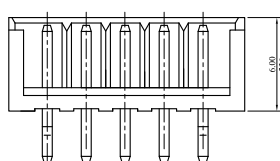
Package: 10K PCS/Reel

## 2421 Series 2.50mm (.098") Header

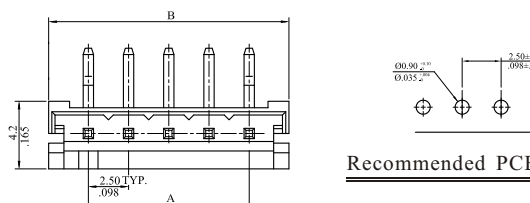
### Straight (V version)



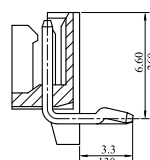
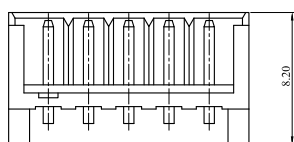
Recommended PCB Layout



### Right Angle (H version)



Recommended PCB Layout



## Features

2421 Header:  
 Available in 2~15 circuits  
 Low profile  
 Polarization slots  
 With standoff minimize flux wicking  
 Nylon 6/6 UL94V-0  
 0.64mm(.025") tin plated square pin  
 PCB thickness: 1.6mm

P/N 2421P \*\* \* 000  $\frac{*}{1 \ 2}$

- No. of circuits
- V= Straight type  
 H= Right angle type

A=2.50mm(.098")x No. of spaces  
 B=A+4.90mm(.193")

# 2.50mm (.098") Wire to Board Connector

Unit:  $\frac{\text{mm}}{\text{Inch}}$

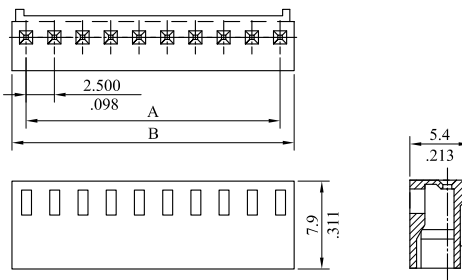
## Specifications

Current rating: 3A AC DC  
 Voltage rating: 250V AC DC  
 Temperature rating: -40°C~+105°C  
 Contact resistance: 20mΩ max.  
 Insulation resistance: 1000MΩ min.  
 Withstanding voltage: 1000V AC/min.

## Standards

Recognized No. E82349  
 RoHS Compliant

## 2500 Series 2.50mm (.098") Housing



## Features

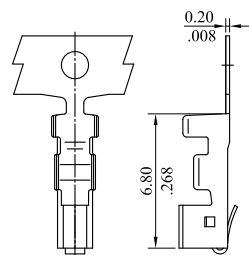
2500 Housing:  
 Available in 2~20 circuits  
 Low profile  
 Polarized with locking ramp  
 Nylon 6/6 UL94V-0

**P/N 2500S \*\* 0000**  
**I**

1.No.of circuits

A=2.5mm(.098")x No.of spaces  
 B=A+3.0mm(.118")

## 2403T Crimping Terminal

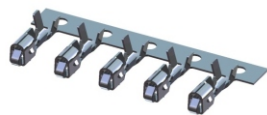
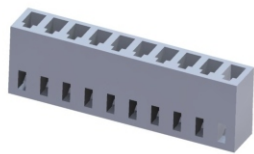


## Features

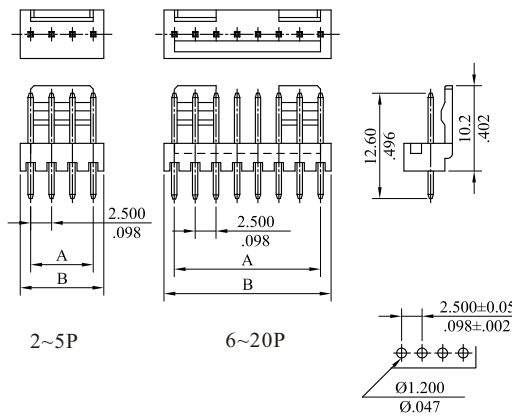
2403 Terminal:  
 Low profile  
 Mates with 0.64mm(.025") square pin  
 Phosphor bronze/Tin plated  
 Wire range: AWG 22~28

**P/N 2403TPB00V1**

Package: 7K PCS/Reel



## 2501 Series 2.50mm (.098") Straight Header



## Features

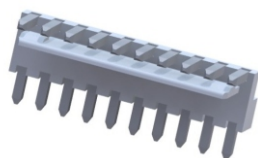
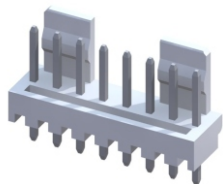
2501 Header:  
 Available in 2~20 circuits  
 Low profile  
 Polarization friction lock  
 Nylon 6/6 UL94V-0  
 0.64mm(.025") square pin  
 PCB thickness 1.6mm

**P/N 2501P \*\* 0000**  
**I**

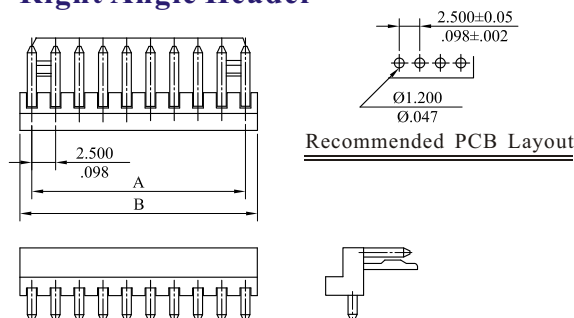
1.No.of circuits

A=2.5mm(.098")x No.of spaces  
 B=A+2.5mm(.098")

Recommended PCB Layout



## 2502 Series 2.50mm (.098") Right Angle Header



## Features

2502 Header:  
 Available in 2~20 circuits  
 Low profile  
 Polarization friction lock  
 Nylon 6/6 UL94V-0  
 0.64mm(.025") square pin

**P/N 2502P \*\* 0000**  
**I**

1.No.of circuits

A=2.5mm(.098")x No.of spaces  
 B=A+2.5mm(.098")

Recommended PCB Layout

# 2.50mm (.098") Wire to Board Connector

Unit:  $\frac{\text{mm}}{\text{Inch}}$

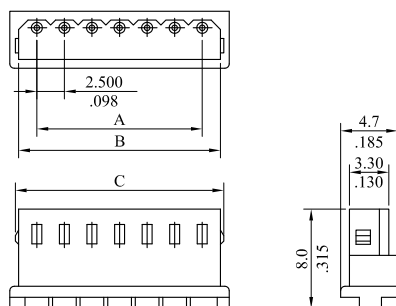
## Specifications

Current rating: 3A AC DC  
 Voltage rating: 250V AC DC  
 Temperature rating: -40°C~+105°C  
 Contact resistance: 20mΩ max.  
 Insulation resistance: 1000MΩ min.  
 Withstanding voltage: 1000V AC/min.

## Standards

Recognized No. E82349  
 RoHS Compliant

## 2508 Series 2.50mm (.098") Housing



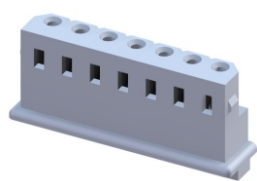
## Features

2508 Housing:  
 Available in 2~15 circuits  
 Nylon 6/6 UL 94V-0

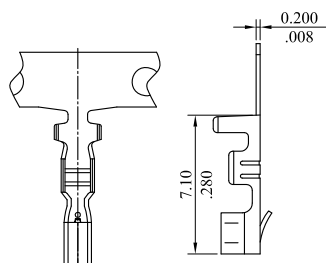
P/N 2508S \*\* 0000

1  
 1.No. of circuits

A=2.5mm(.098")x No. of spaces  
 B=A+3.30mm(.130")  
 C=A+3.90mm(.154")



## 2508T Crimping Terminal

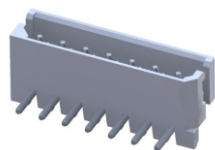
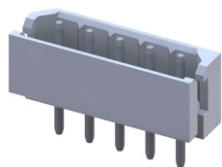


## Features

2508 Terminal:  
 Phosphor bronze/Tin plated  
 Mates with 0.70mm(.028")  
 round pin  
 Wire range: AWG 22~28

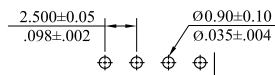
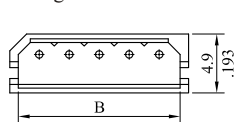
P/N 2508TPB0000

Package: 8K PCS/Reel

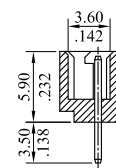
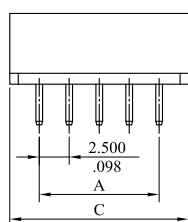


## 2509 Series 2.50mm (.098") Shrouded Header

Straight (V version)



Recommended PCB Layout



## Features

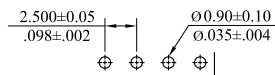
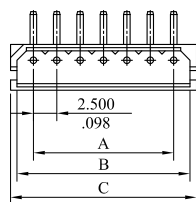
2509 Header:  
 Available in 2~15 circuits  
 Nylon 6/6 UL94V-0  
 Brass/ Tin plated  
 0.70mm(.028") round pin  
 PCB thickness 1.6mm

P/N 2509P \*\* \* 000

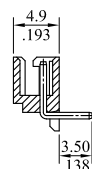
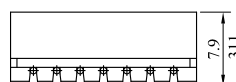
1 2  
 1.No. of circuits  
 2.V=Straight type  
 H=Right angle type

A=2.5mm(.098")x No. of spaces  
 B=A+3.50mm(.138")  
 C=A+4.90mm(.193")

Right Angle (H version)



Recommended PCB Layout



# 2.50mm(.098") Board In Connector

Unit:  $\frac{\text{mm}}{\text{Inch}}$

## Specifications

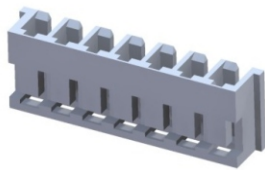
Current rating: 3A AC DC  
 Voltage rating: 250V AC DC  
 Temperature rating: -40°C~+105°C  
 Contact resistance: 20mΩ max.  
 Insulation resistance: 1000MΩ min.  
 Withstanding voltage: 1000V AC/min.

## Standards

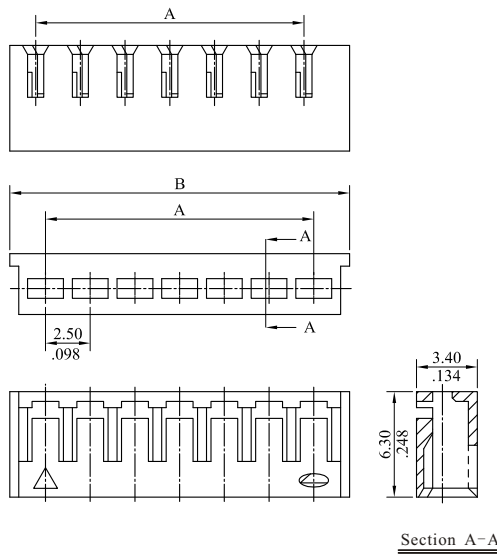
Recognized No. E82349

Certified No. LR65731

RoHS Compliant



## 2512 Series 2.50mm (.098") Board In Connector



## Features

2512 Housing:  
 Available in 2~20 circuits  
 Nylon 6/6 UL94V-0  
 Accepts Leoco 2512T crimp terminal

P/N 2512S \*\* 0000

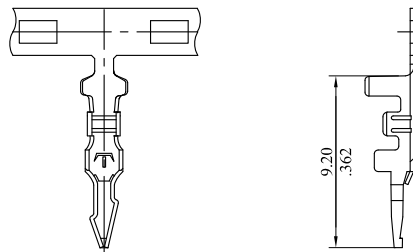
I  
 1. No. of circuits

A=2.5mm (.098") x No. of spaces  
 B=A+4.2mm (.165")



## 2512 Series 2.50mm (.098") Board In Terminal

2512TPB0V0A



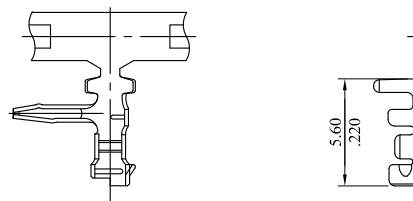
## Features

2512 Terminal:  
 Compliant tip holes terminal to PCB  
 Direct solder on PCB  
 PCB thickness 1.6mm  
 Wire range: AWG 22~28

P/N 2512TPB0V0A

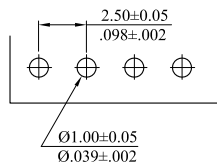
Phosphor bronze/Tin plated  
 Package: 10K PCS / Reel

2512TPB0H0A



P/N 2512TPB0H0A

Phosphor bronze/Tin plated  
 Package: 7K PCS / Reel



## Recommended PCB Layout

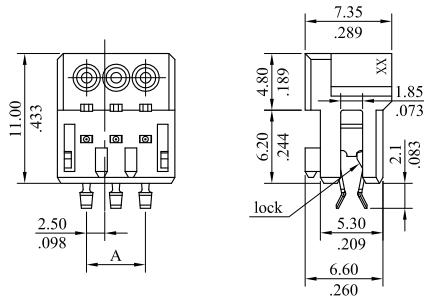
# 2.50mm (.098") Wire to Board Connector

Unit:  $\frac{\text{mm}}{\text{Inch}}$

## Specifications

Current rating: 4A AC DC  
 Voltage rating: 250V AC DC  
 Temperature rating: -40°C~+110°C  
 Contact resistance: 20mΩ max.  
 Insulation resistance: 1000MΩ min.  
 Withstanding voltage: 500V AC/min.

## 2514 Series 2.50mm (.098") IDC Connector (Rast 2.5)



## Features

2514 Connector:  
 Available in 2~ 10 circuits  
 Insulation: PA66+30% G/F,  
 UL94V-0  
 Contact: Phosphor bronze  
 PCB thickness 1.6mm  
 Wire range: AWG 22~24

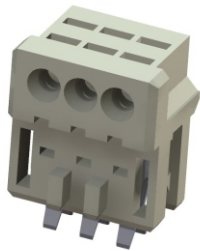
P/N **2514 S** \* \* \* \* \*  
**1 2 3 4 5**

1. Series No.
2. No. of circuits
3. H=Without lock  
D=With lock
4. Plating  
N= Unplated  
0= Tin plated 120u"min. over  
30u"min. nickel overall  
U= Gold flash over 80u"min.  
nickel overall
5. The key position

A=2.5mm(.098")× No. of spaces  
 B=A+5.0mm(.197")

## Standards

RoHS Compliant



The Key Position

TYPE	0A
KEY/LOCK	
2-way	

TYPE	0A	LA	LB
KEY/LOCK			
3-way			

TYPE	0A	LA	LB	LC
KEY/LOCK				
4-way				

TYPE	0A	LA	LB	LC	LD
KEY/LOCK					
5-way					

TYPE	0A	LA	LB	LC	LD	LE
KEY/LOCK						
6-way						

TYPE	0A	LA	LB	LC	LD	LE	LF
KEY/LOCK							
7-way							

TYPE	0A	LA	LB	LC
KEY/LOCK				
8-way				

LD	LE	LF	LG

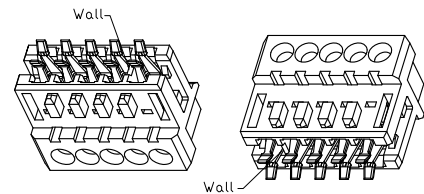
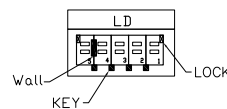
TYPE	0A	LA	LB	LC
KEY/LOCK				
9-way				

LD	LE	LF	LG	LH

TYPE	0A	LA	LB	LC	LD
KEY/LOCK					
10-way					

LE	LF	LG	LH	LI

For example:





# 2.50mm (.098") Wire to Board Connector

Unit:  $\frac{mm}{Inch}$

## Specifications

Current rating: 3A AC DC  
Voltage rating: 250V AC DC  
Temperature rating: -40°C~+105°C  
Contact resistance: 10mΩ max.  
Insulation resistance: 1000MΩ min.  
Withstanding voltage: 1000V AC/min.

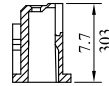
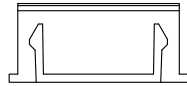
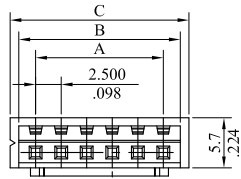
## Standards

Recognized No. E82349

Certified No. LR65731

RoHS Compliant

## 2520 Series 2.50mm (.098") Housing



## Features

2520 Housing:  
Available in 2~20 circuits  
Low profile  
Polarized with locking ribs  
Nylon 6/6 UL94V-0

P/N 2520S \*\* 0000

1

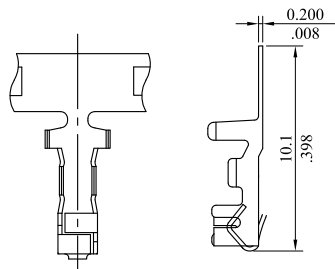
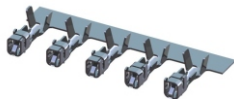
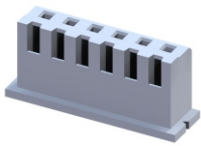
1.No.of circuits

A=2.5mm(.098")x No.of spaces

B=A+3.3mm(.130")

C=A+5.0mm(.197")

## 2593T Crimping Terminal



## Features

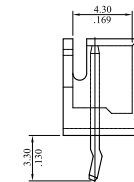
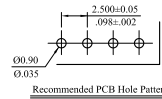
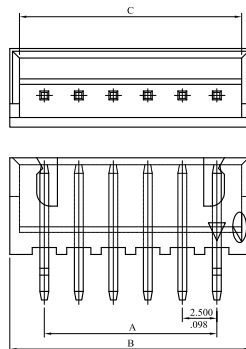
2593 Terminal:  
Dual beam contact  
Mates with 0.64mm(.025") square pin  
Phosphor bronze/Tin plated  
Wire range: AWG 22~28

P/N 2593TPB0000

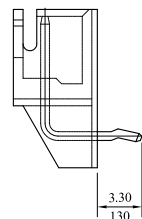
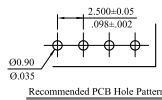
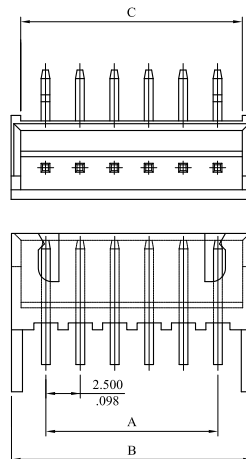
Package:6K PCS/Reel

## 2521 Series 2.50mm (.098") Header

Straight (V version)



Right Angle (H version)



## Features

2521 Header:  
Available in 2~20 circuits  
Low profile  
Polarization slots  
With standoff minimize flux wicking  
Nylon 6/6 UL94V-0  
0.64mm(.025") square pin  
PCB thickness 1.6mm

P/N 2521P \*\* \* 000

1 2

1.No.of circuits

2.V= Straight type

H= Right angle type

A=2.5mm(.098")x No.of spaces

B=A+5.0mm(.197")

C=A+3.60mm(.142")

# 2.50mm (.098") Wire to Wire Connector

Unit:  $\frac{\text{mm}}{\text{Inch}}$

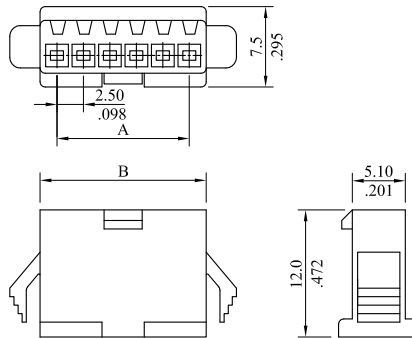
## Specifications

Current rating: 3A AC DC  
 Voltage rating: 250V AC DC  
 Temperature rating: -25°C~+85°C  
 Contact resistance: 20mΩ max.  
 Insulation resistance: 1000MΩ min.  
 Withstanding voltage: 1000V AC/min.

## Standards

Recognized No. E82349  
 RoHS Compliant

## 5700 Series 2.50mm (.098") Housing



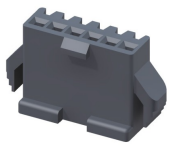
## Features

5700F Receptacle:  
 Available in 2~12 circuits  
 Nylon 6/6 UL94V-0  
 Color:Black  
 Mates with 5714 terminal

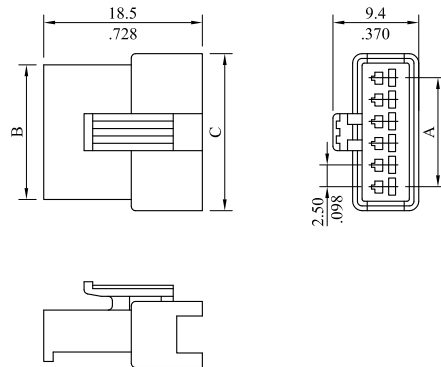
P/N 5700S \*\* F000

I  
 1.No.of circuits

A=2.50mm (.098")x No.of spaces  
 B=A+3.0mm (.118")



## 5700 Series 2.50mm (.098") Housing



## Features

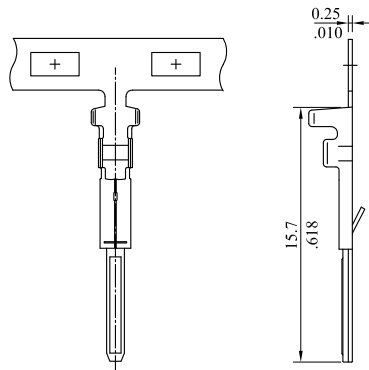
5700M Plug:  
 Available in 2~12 circuits  
 Nylon 6/6 UL94V-0  
 Color:Black  
 Mates with 5713 terminal

P/N 5700S \*\* M000

I  
 1.No.of circuits

A=2.50mm (.098")x No.of spaces  
 B=A+3.1mm (.122")  
 C=A+5.6mm (.220")

## 5713T Crimping Terminal



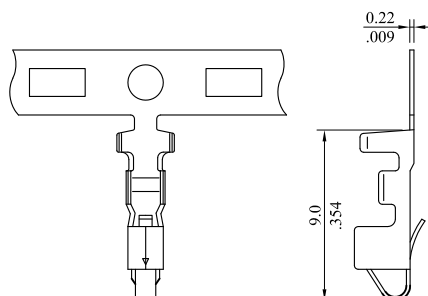
## Features

5713 Terminal:  
 Phosphor bronze/Tin plated  
 Wire range:AWG 22~28

P/N 5713TPB0000

Package:8K PCS/Reel

## 5714T Crimping Terminal



## Features

5714 Terminal:  
 Phosphor bronze/Tin plated  
 Wire range:AWG 22~28

P/N 5714TPB0000

Package:5K PCS/Reel

# 2.54mm (.100") Wire to Board Connector

Unit:  $\frac{\text{mm}}{\text{Inch}}$

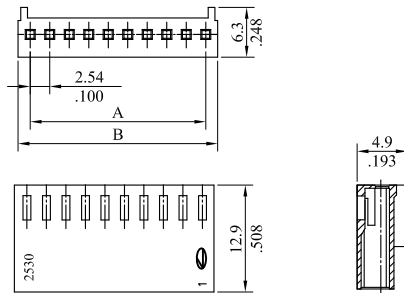
## Specifications

Current rating: 3A AC DC  
 Voltage rating: 250V AC DC  
 Temperature rating: -40°C~+105°C  
 Contact resistance: 20mΩ max.  
 Insulation resistance: 1000MΩ min.  
 Withstanding voltage: 1000V AC/min.

## Standards

Recognized No. E82349  
 RoHS Compliant

## 2530 Series 2.54mm (.100") Housing



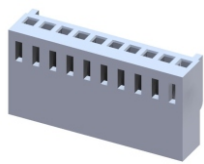
## Features

2530 Housing:  
 Available in 2~20 circuits  
 Polarized with locking ramp  
 Nylon 6/6 UL94V-0

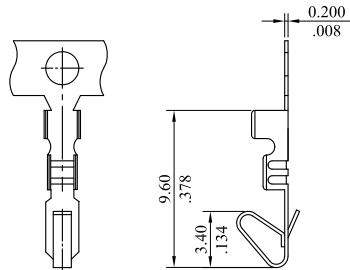
P/N 2530S  $\frac{**}{1} \frac{0}{2} \frac{**}{00}$

- 1.No.of circuits
2. 0=With ramp+lock  
N=Without ramp+lock

A=2.54mm (.100")x No.of spaces  
 B=A+3.16mm (.124")



## 2533T Crimping Terminal

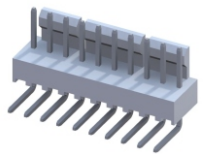
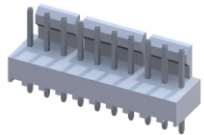


## Features

2533 Terminal:  
 Mates with 0.64mm (.025") square pin  
 Phosphor bronze/Tin plated  
 Wire range:AWG 22~28

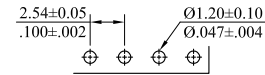
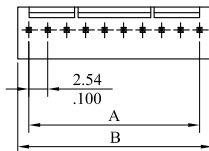
P/N 2533TPB0000

Package:8K PCS/Reel

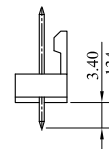
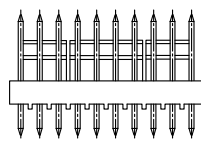


## 2571 Series 2.54mm (.100") Header

Straight (V version)



Recommended PCB Layout



## Features

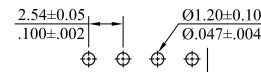
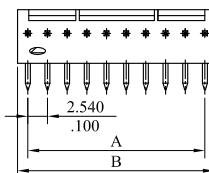
2571 Header:  
 Available in 2~20 circuits  
 Polarization friction lock  
 Nylon 6/6 UL94V-2  
 0.64mm (.025") square pin  
 2531, 2571: Mates with Leoco  
 2530 socket  
 PCB thickness 1.6mm

P/N 2571P  $\frac{**}{1} \frac{**}{2} \frac{**}{000}$

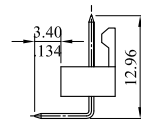
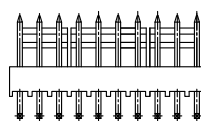
- 1.No.of circuits
- 2.V=Straight type  
H=Right angle type

A=2.54mm (.100")x No.of spaces  
 B=A+2.56mm (.101")

Right Angle (H version)



Recommended PCB Layout





## 2.54mm (.100") / 3.96mm (.156") Wire to Board Connector

Unit:  $\frac{\text{mm}}{\text{Inch}}$

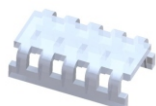
### Specifications

Current rating: 7A AC DC  
 Voltage rating: 250V AC DC  
 Temperature rating: -40°C ~ +105°C  
 Contact resistance: 10mΩ max.  
 Insulation resistance: 1000MΩ min.  
 Withstanding voltage: 1500V AC/min.

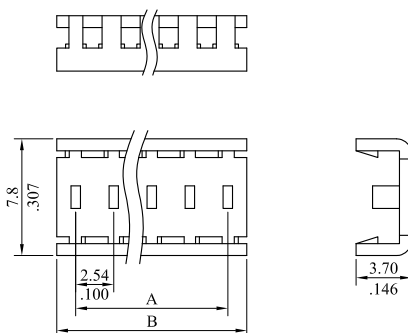
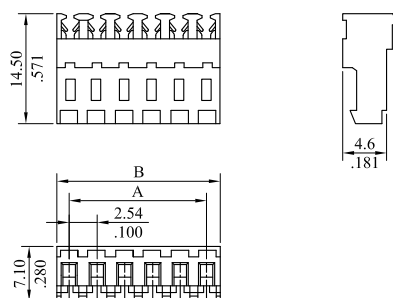
### Standards

Recognized No. E82349

RoHS Compliant



### 2547 Series 2.54mm (.100") Center Mass Terminated Connector



### Features

2547 Connector:  
 Available in 2~28 circuits  
 Nylon 6/6 UL94V-2  
 Brass

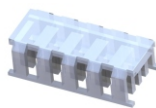
P/N 2547S                        

- 1 2 3
- No. of circuits
  - Color  
 00=Natural 30=Red  
 60=Green 70=Blue
  - Wire range:  
 22=22 AWG  
 24=24 AWG  
 26=26 AWG  
 28=28 AWG

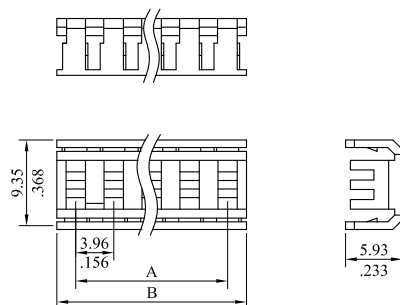
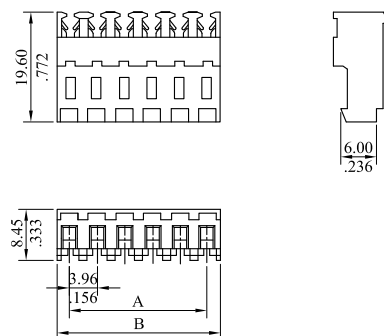
P/N 2547 C                         \*

- 1 2 3
- C=Cover
  - No. of circuits
  - Color  
 0=Natural  
 3=Red  
 6=Green  
 7=Blue

A=2.54mm (.100") x No. of spaces  
 B=A+2.54mm (.100")



### 3969 Series 3.96mm (.156") Center Mass Terminated Connector



### Features

3969 Connector:  
 Available in 2~15 circuits  
 Nylon 6/6 UL94V-2  
 Brass

P/N 3969S                        

- 1 2 3
- No. of circuits
  - Color  
 00=Natural 30=Red  
 60=Green 70=Blue
  - Wire range:  
 18=18 AWG  
 20=20 AWG  
 22=22 AWG  
 24=24 AWG  
 26=26 AWG

P/N 3969 C                         \*

- 1 2 3
- C=Cover
  - No. of circuits
  - Color  
 0=Natural  
 3=Red  
 6=Green  
 7=Blue

A=3.96mm (.156") x No. of spaces  
 B=A+3.96mm (.156")

# 2.54mm (.100") Wire to Board Connector

Unit:  $\frac{\text{mm}}{\text{Inch}}$

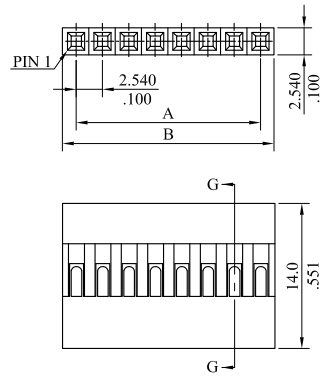
## Specifications

Current rating: 3A AC DC  
 Voltage rating: 250V AC DC  
 Temperature rating: -25°C~+105°C  
 Contact resistance: 20mΩ max.  
 Insulation resistance: 1000MΩ min.  
 Withstanding voltage: 1000V AC/min.

## Standards

Recognized No. E82349  
 RoHS Compliant

## 2665 Series 2.54mm (.100") Single Row Housing



## Features

2665 Housing:  
 Available in 2~40 circuits  
 Can be used with Leoco 6001 polarizing key  
 Thermoplastic UL94V-1  
 Color: Black  
 Accepts Leoco 2653, 2663 crimp terminal

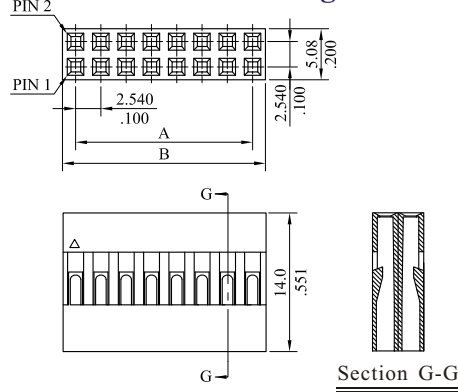
P/N 2665S \*\* 0000

$\frac{1}{1}$   
 1.No.of circuits

A=2.54mm (.100")x No.of spaces  
 B=A+2.54mm (.100")



## 2655 Series 2.54mm (.100") Dual Row Housing



## Features

2655 Housing:  
 Available in 4~72 circuits  
 Can be used with Leoco 6001 polarizing key  
 Thermoplastic UL94V-1  
 Color: Black  
 Accepts Leoco 2653, 2663 crimp terminal

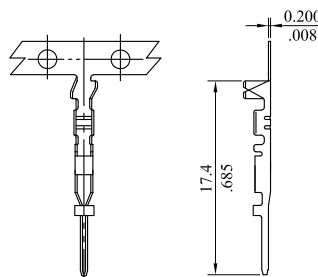
P/N 2655S \*\* 0000

$\frac{1}{1}$   
 1.No.of circuits

A=2.54mm (.100")x No.of spaces  
 B=A+2.54mm (.100")



## 2663T Crimping Terminal



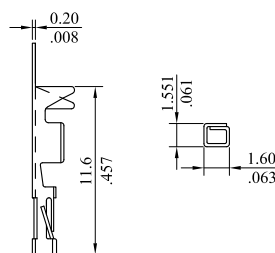
## Features

2663 Terminal:  
 Mates with Leoco 2653 crimp terminal  
 Copper alloy/Pre-tinned  
 Wire range: AWG 22~28

P/N 2663T\*B0000

Package: 10K PCS/Reel

## 2653T Crimping Terminal



## Features

2653 Terminal:  
 Twin leaf box shaped terminal  
 Mates with 0.64mm (.025") square pin  
 Phosphor bronze  
 Wire range: AWG 22~28

P/N 2653TPB \* 00 \*

$\frac{1}{2}$   
 1. Plating  
 0= Tin plated  
 F= Selective gold flash  
 2. Circuits range  
 1= Used in between 1 circuits and 7 circuits  
 2= Used in between 8 circuits and 20 circuits  
 3= Used in between 21 circuits and 40 circuits

Package: 8K PCS/Reel

# 2.54mm (.100") Wire to Board Connector

Unit:  $\frac{\text{mm}}{\text{Inch}}$

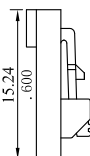
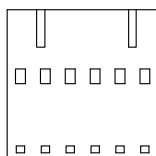
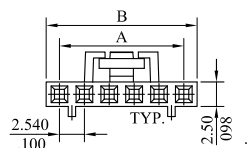
## Specifications

Current rating: 1A DC(signal)  
 5A DC(power)  
 Voltage rating: 250V DC  
 Temperature rating: -25°C~+105°C  
 Contact resistance: 20mΩ max.  
 Insulation resistance: 1000MΩ min.  
 Withstanding voltage: 500V  
 AC/min.(signal)  
 1000V AC/min.(power)

## Standards

Recognized No. E82349  
 RoHS Compliant

## 7066 Series 2.54mm (.100") Crimp Terminal Locking Socket



## Features

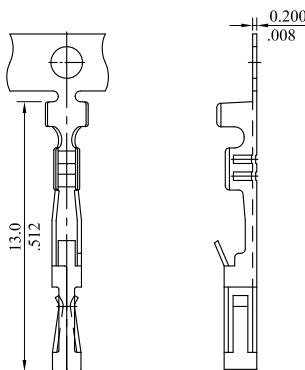
7066 Housing:  
 Available in 2~12 circuits  
 Low profile  
 With molded locking ramp  
 PBT UL94V-0  
 Accepts Leoco 7058 series crimp terminal

P/N 7066S \*\* 0000  
 I

1.No.of circuits

A=2.54mm(.100")x No.of spaces  
 B=A+2.54mm(.100")

## 7058T Crimping Terminal



## Features

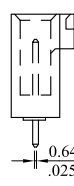
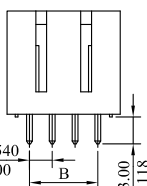
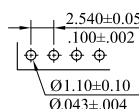
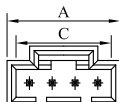
7058 Terminal:  
 Dual beam contact  
 Use in Leoco 7066 series socket  
 Accepts 0.64mm (.025") square pin  
 Phosphor bronze  
 Wire range : AWG 22~28

P/N 7058TPB \* 000  
 I

- Plating
    - 0= Tin plated 120u" min. over 30u"min. nickel overall
    - F= Selective gold flash over 30u"min. nickel overall
    - J= 15u" min. gold plated selective over 30u"min. nickel overall
- Package: 15K PCS/Reel

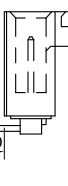
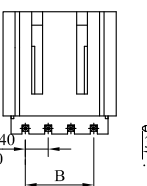
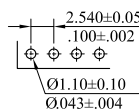
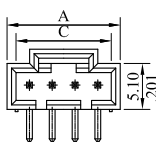
## 2550 Series 2.54mm (.100") Header

Straight (V version)



Recommended PCB Layout

Right Angle (H version)



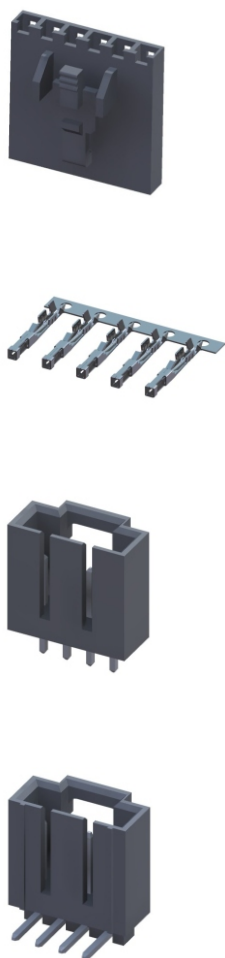
Recommended PCB Layout

## Features

2550 Header:  
 Available in 2~12 circuits  
 With standoff  
 PBT UL94V-0  
 Accepts 0.64mm(.025") square pin  
 Contact: Brass

P/N 2550P \*\* \* 00  
 I 2 3

- No. of circuits
- V= Straight type  
 H= Right angle type
- Plating
  - T= Tin plated 120u" min. over 30u"min. nickel overall
  - U= Gold flash over 30u" min. nickel overall



# 3.96mm (.156") Wire to Board Connector

Unit:  $\frac{\text{mm}}{\text{Inch}}$

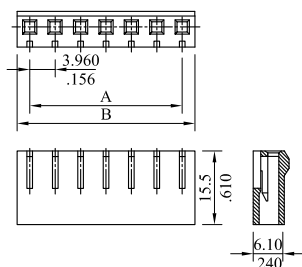
## Specifications

Current rating: 7A AC DC  
 Voltage rating: 250V AC DC  
 Temperature rating: -40°C~+105°C  
 Contact resistance: 20mΩ max.  
 Insulation resistance: 1000MΩ min.  
 Withstanding voltage: 1500V AC/min.

## Standards

- Recognized No. E82349
- Certified No. LR65731
- RoHS Compliant

## 3940 Series 3.96mm (.156") Housing



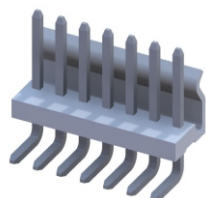
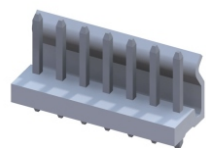
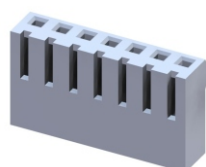
## Features

3940 Housing:  
 Available in 2~20 circuits  
 Polarized with locking ramp  
 Nylon 6/6 UL94V-0  
 Accepts Leoco 3979 and 3983 crimp terminal  
 Mates with Leoco 3941 and 3986 header

P/N 3940S  $\frac{**}{1} \frac{00}{2} **$

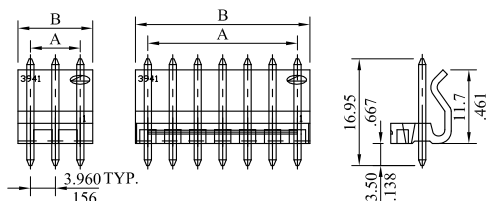
- 1.No.of circuits
- 2.00=Material Nylon 66 UL94V-0
- E0=Material Nylon 66 UL94V-2

A=3.96mm(.156")x No.of spaces  
 B=A+4.54mm(.179")



## 3941 Series 3.96mm (.156") Header

Straight (V version)



2~3 circuits      4~20 circuits

## Features

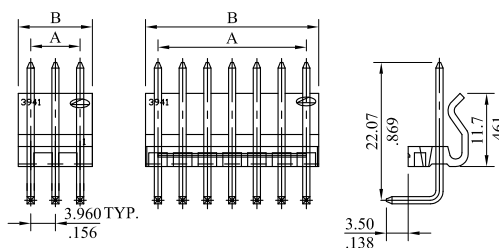
3941 Header:  
 Available in 2~20 circuits  
 Polarized with friction lock  
 Nylon 6/6 UL94V-0  
 1.14mm(.045") square pin or round pin  
 PCB thickness 1.6mm

P/N 3941P  $\frac{**}{1} \frac{**}{2} \frac{**}{3} \frac{**}{0}$

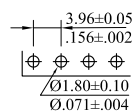
- 1.No.of circuits
- 2.V= Straight (square pin) type
- R= Straight (round pin) type
- H= Right angle (square pin) type
- 3.00=Material Nylon 66 UL94V-0
- 0E=Material Nylon 66 UL94V-2

A=3.96mm(.156")x No.of spaces  
 B=A+3.94mm(.155")

Right Angle (H version)

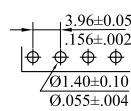


2~3 circuits      4~20 circuits



For square pin

Recommended PCB Layout



For round pin

Recommended PCB Layout

# 3.96mm (.156") Wire to Board Connector

Unit:  $\frac{\text{mm}}{\text{Inch}}$

## Specifications

Current rating: 7A AC DC  
 Voltage rating: 250V AC DC  
 Temperature rating: -25°C~+105°C  
 Contact resistance: 20mΩ max.  
 Insulation resistance: 1000MΩ min.  
 Withstanding voltage: 1500V AC/min.

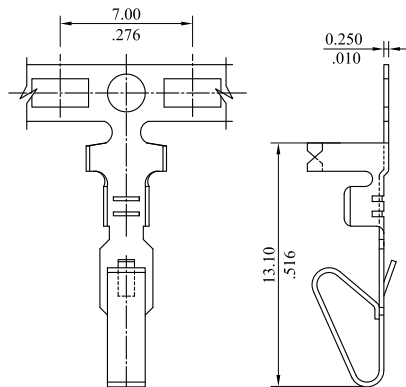
## Standards

Recognized No. E82349

Certified No. LR65731

RoHS Compliant

## 3979T Crimping Terminal



## Features

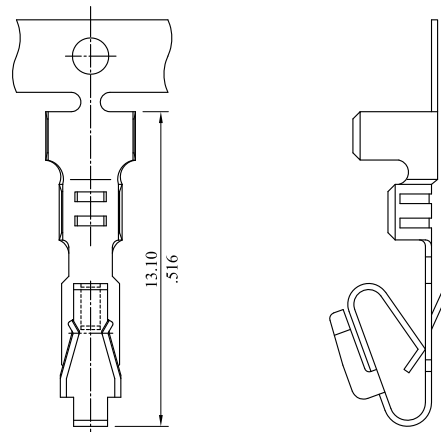
3979 Terminal:  
 Wire range: AWG 18~24

**P/N 3979TPB0000**

Phosphor bronze/Tin plated  
 Package: 5K PCS/Reel  
 Work with 3940, 5000 and  
 5080, 7500 housing



## 3983T Crimping Terminal



## Features

3983 Terminal:  
 Wire range: AWG 18~24

**P/N 3983TPB0000**

Phosphor bronze/Tin plated  
 Package: 5K PCS/Reel  
 Work with 3940, 5000 and  
 5080, 7500 housing

# 3.96mm (.156") Wire to Board Connector

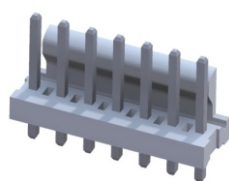
Unit:  $\frac{\text{mm}}{\text{Inch}}$

## Specifications

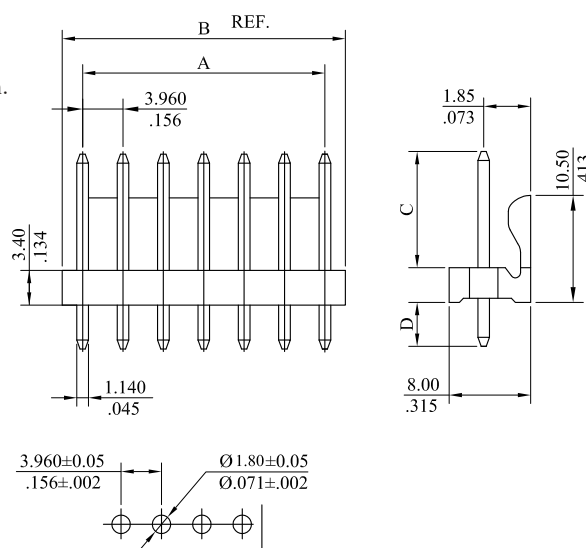
Current rating: 7A AC DC  
 Voltage rating: 250V AC DC  
 Temperature rating: -25°C~+85°C  
 Contact resistance: 20mΩ max.  
 Insulation resistance: 1000MΩ min.  
 Withstanding voltage: 1000V AC/min.

## Standards

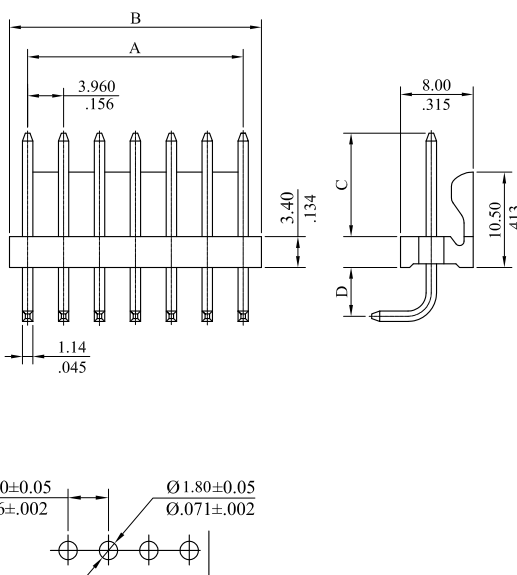
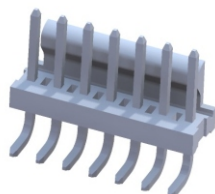
Recognized No. E82349  
 RoHS Compliant



## 3943 Series 3.96mm (.156") Header



### Recommended PCB Layout



### Recommended PCB Layout

## Features

3943 Header:  
 Available in 2~15 circuits  
 Insulator: Nylon6/6 UL94V-0  
 Contact: Brass  
 Plating: Tin plated

**P/N 3943 P \*\* V \* 00**

- | 1                | 2                     | 3                    | 4                        |
|------------------|-----------------------|----------------------|--------------------------|
| Series No.       | No. of circuits       | V= Straight type     | Length of pin            |
| 0: Standard type | Dim.C=10.15mm (.400") | Dim.D=3.40mm (.134") | A: Dim.C=10.15mm (.400") |
|                  |                       |                      | Dim.D=4.00mm (.157")     |

A=No. of spaces x 3.96mm (.156")  
 B=A+3.96mm (.156")

## Features

3943 Header:  
 Available in 2~15 circuits  
 Insulator: Nylon6/6 UL94V-0  
 Contact: Brass  
 Plating: Tin plated

**P/N 3943 P \*\* H \* 00**

- | 1                | 2                     | 3                    | 4                        |
|------------------|-----------------------|----------------------|--------------------------|
| Series No.       | No. of circuits       | H= Right angle type  | Length of pin            |
| 0: Standard type | Dim.C=10.15mm (.400") | Dim.D=3.40mm (.134") | A: Dim.C=10.15mm (.400") |
|                  |                       |                      | Dim.D=4.00mm (.157")     |

A=No. of spaces x 3.96mm (.156")  
 B=A+3.96mm (.156")

# 3.96mm (.156") Wire to Board Connector

Unit:  $\frac{\text{mm}}{\text{Inch}}$

## Specifications

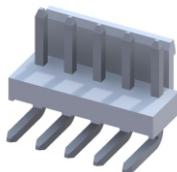
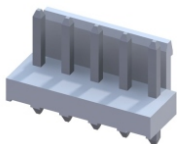
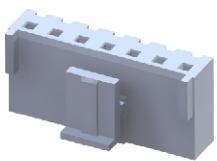
Current rating: 7A AC DC  
 Voltage rating: 250V AC DC  
 Temperature rating: -40°C~+105°C  
 Contact resistance: 20mΩ max.  
 Insulation resistance: 1000MΩ min.  
 Withstanding voltage: 1500V AC/min.

## Standards

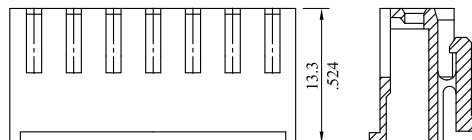
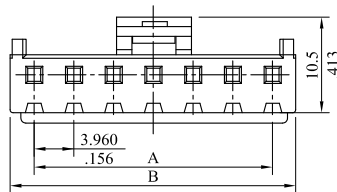
Recognized No. E82349

Certified No. LR65731

RoHS Compliant



## 3950 Series 3.96mm (.156") Housing



## Features

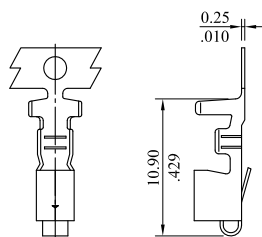
3950 Housing:  
 Available in 2~12 circuits  
 Polarized and with locking mechanism  
 Nylon 6/6 UL94V-0

P/N 3950S \*\* 000  $\frac{*}{1}$   $\frac{*}{2}$

- No. of circuits
- Housing color option  
 0=White 1=Black

A=3.96mm(.156")x No. of spaces  
 B=A+4.72mm(.186")

## 3953T Crimping Terminal



## Features

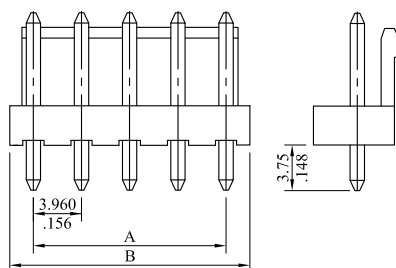
3953 Terminal:  
 Mates with 1.14mm (.045") square pin  
 Phosphor bronze/Tin plated  
 Wire range: AWG 18~22

P/N 3953TPB00V2

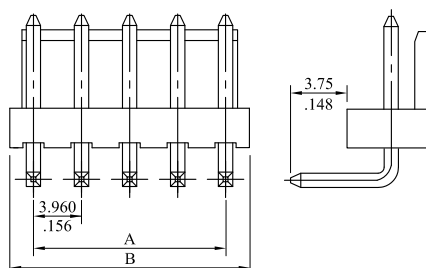
Package: 3K PCS/Reel

## 3951 Series 3.96mm (.156") Header

Straight (V version)



Right Angle (H version)



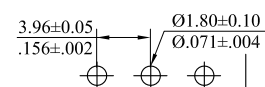
## Features

3951 Header:  
 Available in 2~12 circuits  
 Polarized and with locking ramp  
 Nylon 6/6 UL94V-0  
 1.14mm(.045") square pin  
 PCB thickness 1.6mm

P/N 3951P \*\* \* 000  $\frac{*}{1}$   $\frac{*}{2}$

- No. of circuits
- V= Straight type  
 H= Right angle type

A=3.96mm(.156")x No. of spaces  
 B=A+3.94mm(.155")



Recommended PCB Layout

# 3.96mm (.156") Wire to Board Connector

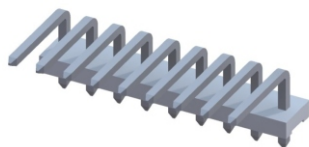
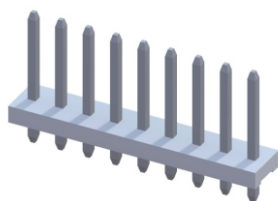
Unit:  $\frac{\text{mm}}{\text{Inch}}$

## Specifications

Current rating: 7A AC DC  
 Voltage rating: 250V AC DC  
 Temperature rating: -25°C~+105°C  
 Contact resistance: 20mΩ max.  
 Insulation resistance: 500MΩ min.  
 Withstanding voltage: 500V AC/min.

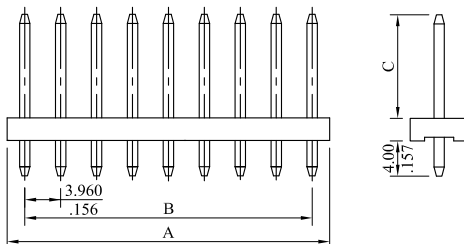
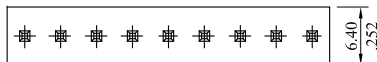
## Standards

RoHS Compliant

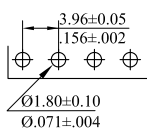
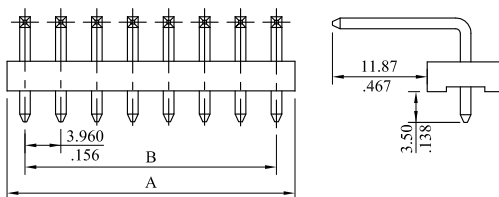
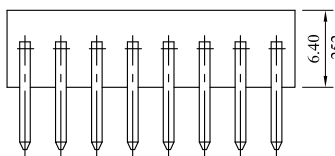


## 3968 Series 3.96mm (.156") Single Row Header

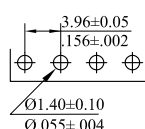
Straight (V version)



Right Angle (H version)



For square pin



For round pin

## Features

3968 Header:  
 Available in 2~20 circuits  
 Nylon 6/6 UL94V-0  
 Mates with Leoco 3940 socket  
 1. 1.4mm(.045") tin plated square or round pin options  
 Plating options are available  
 Pin omit options are available in any circuits

P/N 3968P  $\frac{**}{1}$   $\frac{V}{2}$   $\frac{*}{3}$   $\frac{**}{4}$

- No. of circuits
- V= Straight (square pin) type  
 R= Straight (round pin) type  
 H= Right angle (square pin) type
- Pin length options  
 0: Dim.C=9.95mm(.392")  
 A: Dim.C=12.92mm(.509")  
 B: Dim.C=22.00mm(.866")  
 P: Empty circuits
- Special options  
 00= Standard  
 01= Empty pin2

A=B+3.96mm(.156")  
 B=3.96mm(.156")x No. of spaces

## Recommended PCB Layout

# 3.96mm (.156") Wire to Board Connector

Unit:  $\frac{\text{mm}}{\text{Inch}}$

## Specifications

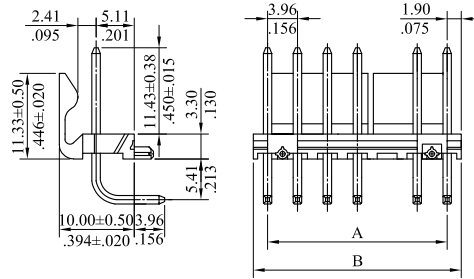
Current rating: 7A AC DC max.  
 Voltage rating: 250V AC DC  
 Temperature rating: -40°C ~ +105°C  
 Contact resistance: 20mΩ max.  
 Insulation resistance: 1000MΩmin.  
 Withstanding voltage: 1500V AC/min.

## Standards

Recognized No. E82349

RoHS Compliant

## 3972 Series 3.96mm (.156") Header Assembly Friction Lock Right Angle with Pegs



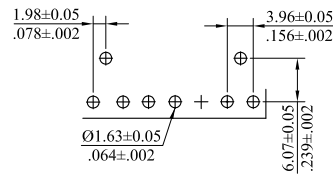
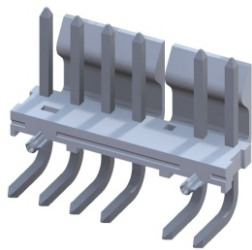
## Features

3972 Header:  
 Available in 2~7 circuits  
 Insulator: Nylon 6/6 UL94V-0  
 Contact : Brass/Tin plated  
 1.14mm(.045") square pin

**P/N 3972P \*\* H P 04**  
**1 2 3**

1. No. of circuits
2. H: Right angle type
3. 04: Empty circuits No. 3

A=3.96mm (.156") x No. of spaces  
 B=A+3.96mm (.156")



Recommended PCB Layout

## 3.96mm (.156")/5.08mm (.200") Wire to Board Connector

Unit:  $\frac{\text{mm}}{\text{Inch}}$

### Specifications

Current rating: 7A AC DC  
 Voltage rating: 250V AC DC  
 Temperature rating: -25°C ~ +85°C  
 Contact resistance: 10mΩ max.  
 Insulation resistance: 1000MΩ min.  
 Withstanding voltage: 1500V AC/min.

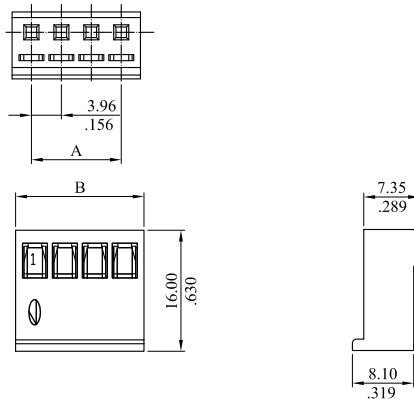
### Standards

Recognized No. E82349  
 RoHS Compliant



### 3976 Series 3.96mm (.156") Housing

3976S\*\*00GT



### Features

3976 Housing:  
 Available in 2~12 circuits  
 Insulator: UL94V-0 PA6 & PA66  
 Accepts Leoco 3976 crimp terminal  
 Mates with 3951 friction lock header  
 Compliance with IEC 60335-1  
 GWT Certified

P/N 3976 S \*\* 00GT

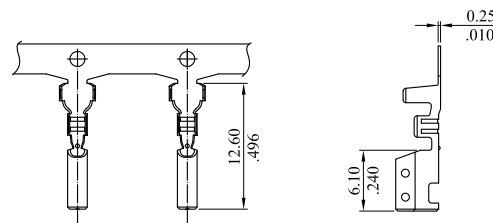
1 2

1. Series No.
2. No. of circuits

A=3.96mm(.156") x No. of spaces  
 B=A+5.1mm(.201")

### 3976T Series Crimping Terminal

3976TCB00V1



### Features

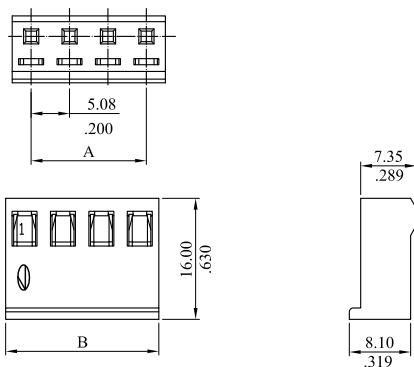
3976 Terminal:  
 3976 terminal mates with 1.14mm (.045") square pin  
 Brass / Tin plated  
 Wire range: AWG 18~24

P/N 3976TCB00V1

Package: 3.5K PCS/Reel

### 5092 Series 5.08mm (.200") Housing

5092S\*\*00GT



### Features

5092 Housing:  
 Available in 2~9 circuits  
 PA6&PA66,UL94V-0  
 Accepts Leoco 3976 crimp terminal  
 Mates with 5086 friction lock header  
 Compliance with IEC 60335-1  
 GWT Certified

P/N 5092 S \*\* 00GT

1 2

1. Series No.
2. No. of circuits

A=5.08mm(.200") x No. of spaces  
 B=A+5.0mm(.197")

# 3.96mm (.156") Wire to Board Connector

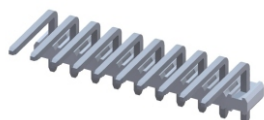
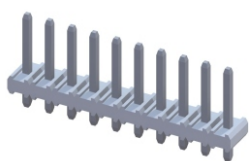
Unit:  $\frac{\text{mm}}{\text{Inch}}$

## Specifications

Current rating: 7A AC DC  
 Voltage rating: 250V AC DC  
 Temperature rating: -25°C~+105°C  
 Contact resistance: 20mΩ max.  
 Insulation resistance: 1000MΩ min.  
 Withstanding voltage: 500V AC/min.

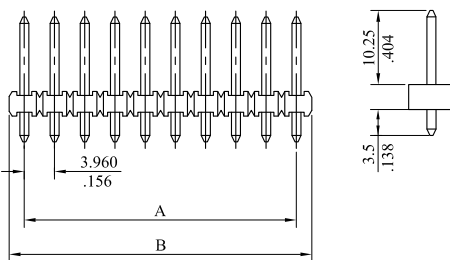
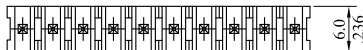
## Standards

Recognized No. E82349  
 RoHS Compliant

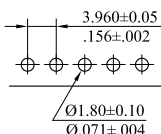
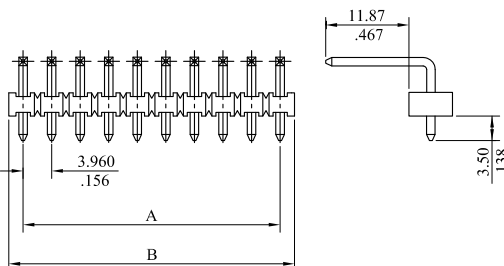
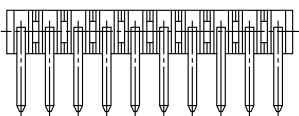


## 3986 Series 3.96mm (.156") Single Row Breakaway Header

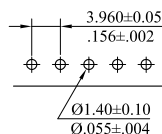
Straight (V version)



Right Angle (H version)



For square pin



For round pin

## Features

3986 Header:  
 Available in 2~20 circuits  
 Nylon 6/6 UL94V-0  
 Easy breakaway to desired circuits  
 With standoff minimize flux retention  
 Mates with Leoco 3940 socket  
 1.14mm (.045") tin plated square or round pin options  
 Plating options are available  
 Pin omit options are available in any circuits

**P/N 3986P \*\* V 000**

**I 2**

- No. of circuits
- V= Straight (square pin) type  
 R= Straight (round pin) type  
 H= Right angle (square pin) type

A= 3.96mm (.156") x No. of spaces  
 B= A+3.96mm (.156")

## Recommended PCB Layout

# 4.00mm (.157") Wire to Board Connector

Unit:  $\frac{\text{mm}}{\text{Inch}}$

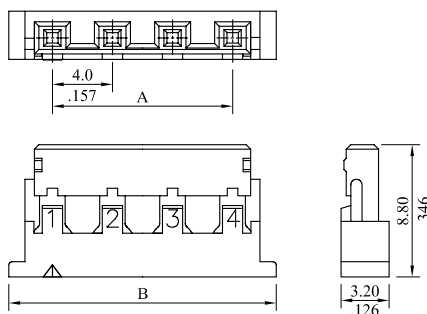
## Specifications

Current rating: 1A AC DC  
 Voltage rating: 600V AC DC  
 Temperature rating: -25°C~+85°C  
 Contact resistance: 20mΩ max.  
 Insulation resistance: 1000MΩ min.  
 Withstanding voltage: 1800V AC/min.

## Standards

RoHS Compliant

## 4000 Series 4.00mm (.157") Receptacle Connector



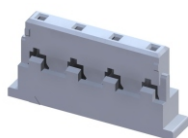
## Features

4000F Housing:  
 Available in 2~4 circuits  
 Nylon 6/6 UL94V-0  
 Use with 4004 terminal  
 Mate with 4000 header

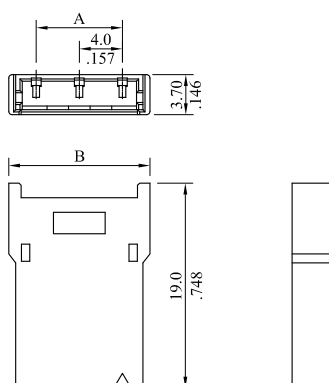
P/N **4000S \*\* F000**  
**I**

1.No.of circuits

A=4.0mm(.157")x No.of spaces  
 B=A+5.8mm(.228")



## 4000 Series 4.00mm (.157") Plug Connector



## Features

4000M Housing:  
 Available in 2~4 circuits  
 Nylon 6/6 UL94V-0  
 Use with 4003 terminal

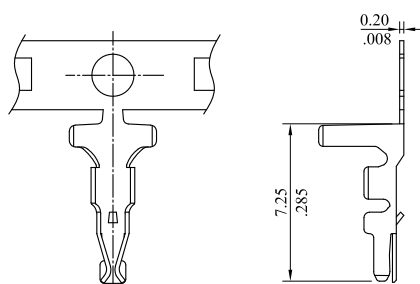
P/N **4000S \*\* M000**  
**I**

1.No.of circuits

A=4.0mm(.157")x No.of spaces  
 B=A+5.1mm(.200")



## 4004T Crimping Terminal



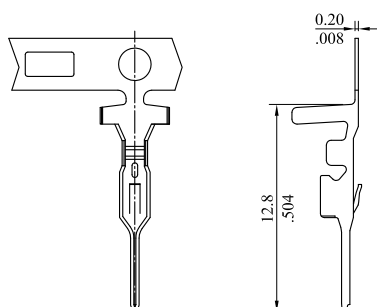
## Features

4004 Terminal:  
 Wire range: AWG 22~28  
 Phosphor bronze/Tin plated

P/N **4004TPB0000**

Package:4K PCS/Reel

## 4003T Crimping Terminal



## Features

4003 Terminal:  
 Wire range: AWG 22~28  
 Phosphor bronze/Tin plated

P/N **4003TPB0000**

Package:4K PCS/Reel

# 4.00mm (.157") Wire to Board Connector

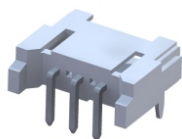
Unit:  $\frac{\text{mm}}{\text{Inch}}$

## Specifications

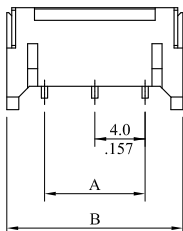
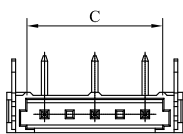
Current rating: 1A AC DC  
 Voltage rating: 600V AC DC  
 Temperature rating: -25°C~+85°C  
 Contact resistance: 20mΩ max.  
 Insulation resistance: 1000MΩ min.  
 Withstanding voltage: 1800V AC/min.

## Standards

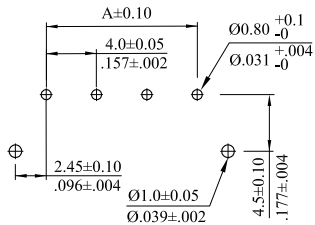
RoHS Compliant



## 4000 Series 4.00mm (.157") Right Angle Type Header



4000P03H000



Recommended PCB Layout

## Features

4000 Header:  
 Available in 2~4 circuits  
 Nylon 6T UL94V-0  
 0.5mm(.020") square pin  
 Mates with Leoco 4000F socket

P/N 4000P I F000

1.No.of circuits

A=4.0mm(.157")x No.of spaces

B=A+6mm(.236")

C=A+2.8mm(.110")

# 5.00mm (.197") Wire to Board Connector

Unit:  $\frac{\text{mm}}{\text{Inch}}$

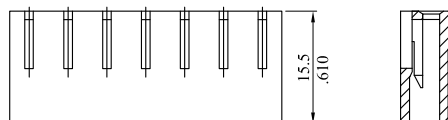
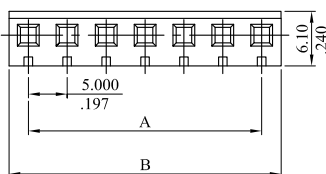
## Specifications

Current rating: 7A AC DC  
 Voltage rating: 250V AC DC  
 Temperature rating: -25°C~+105°C  
 Contact resistance: 20mΩ max.  
 Insulation resistance: 1000MΩ min.  
 Withstanding voltage: 1500V AC/min.

## Standards

Recognized No. E82349  
 Certified No. LR65731  
 RoHS Compliant

## 5000 Series 5.00mm (.197") Housing



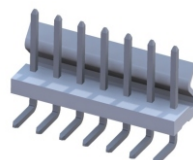
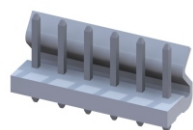
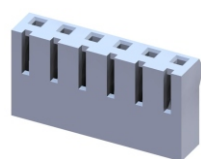
## Features

5000 Housing:  
 Available in 2~16 circuits  
 Polarized with locking ramp  
 Nylon 6/6 UL94V-0  
 Accepts Leoco 3983 and 3979 crimp terminal

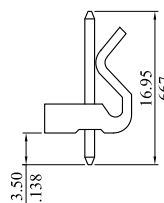
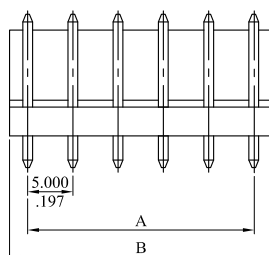
P/N 5000S  $\frac{**}{I}$  0013

1.No.of circuits

A=5.00mm(.197")x No.of spaces  
 B=A+5.00mm(.197")



## 5001 Series 5.00mm (.197") Straight Header



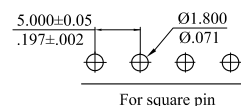
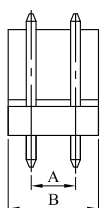
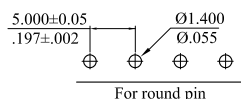
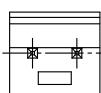
## Features

5001 Header:  
 Available in 2~16 circuits  
 Polarized with molded friction lock  
 Nylon 6/6 UL94V-0  
 1.14mm(.045") square pin or round pin  
 PCB thickness 1.6mm

P/N 5001P  $\frac{**}{I}$  0 \* 13

1.No.of circuits  
 2. 0=Square pin  
 R=Round pin

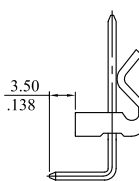
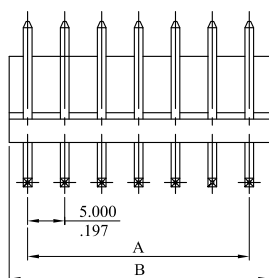
A=5.00mm(.197")x No.of spaces  
 B=A+5.00mm(.197")



Recommended PCB Layout



## 5002 Series 5.00mm (.197") Right Angle Header



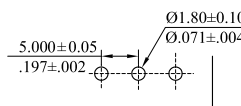
## Features

5002 Header:  
 Available in 2~16 circuits  
 Polarized with molded friction lock  
 Nylon 6/6 UL94V-0  
 1.14mm(.045") square pin

P/N 5002P  $\frac{**}{I}$  0013

1.No.of circuits

A=5.00mm(.197")x No.of spaces  
 B=A+5.00mm(.197")



Recommended PCB Layout



# 5.00mm (.197") Wire to Board Connector

Unit:  $\frac{\text{mm}}{\text{Inch}}$

## Specifications

Current rating: 7A AC DC  
 Voltage rating: 250V AC DC  
 Temperature rating: -25°C~+105°C  
 Contact resistance: 20mΩ max.  
 Insulation resistance: 1000MΩ min.  
 Withstanding voltage: 1500V AC/min.

## Standards

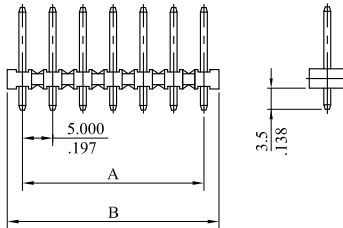
Recognized No. E82349

Certified No. LR65731

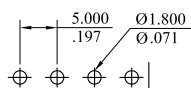
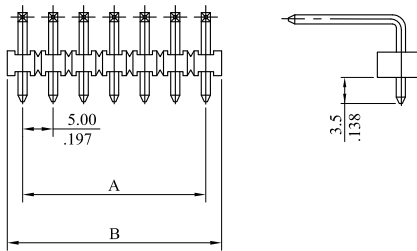
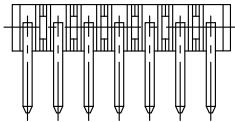
RoHS Compliant

## 5016 Series 5.00mm (.197") Single Row Breakaway Header

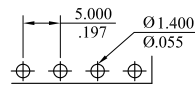
Straight (V version)



Right Angle (H version)



For square pin



For round pin

### Recommended PCB Layout

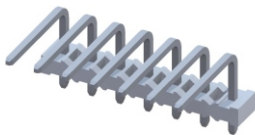
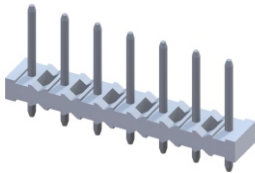
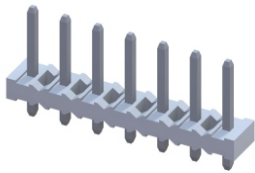
## Features

5016 Header:  
 Available in 1~7 circuits  
 Nylon 6/6 UL94V-0  
 1.14mm (.045") tin plated square  
 or round pin options  
 PCB thickness 1.6mm

P/N 5016P  $\frac{**}{1}$   $\frac{*}{2}$  000

- 1.No.of circuits
- 2.V= Straight (square pin) type  
 H= Right angle (square pin) type  
 R= Straight (round pin) type

A=5.00mm (.197")x No.of spaces  
 B=A+5.00mm (.197")



# 5.00mm (.197") Wire to Board Connector

Unit:  $\frac{\text{mm}}{\text{Inch}}$

## Specifications

Current rating: 16A AC DC  
 Voltage rating: 380V AC DC  
 Temperature rating: -40°C ~ +110°C  
 Contact resistance:  $\leq 20\text{m}\Omega$  max.  
 Insulation resistance: 1000M $\Omega$  min.  
 Withstanding voltage: 1800V AC/min.

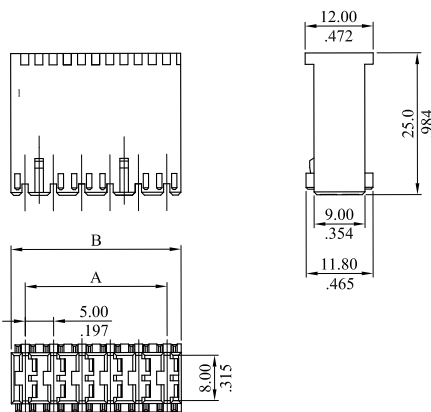
## Standards

Recognized No. E82349

Approval No. 40017373

RoHS Compliant

## 5011 Series 5.00mm (.197") Power Socket (Rast 5)



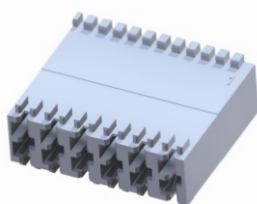
## Features

5011 Housing:  
 Available in 2~12 circuits  
 Polarized with locking ribs  
 PA66 UL94V-0  
 Compliance with IEC 60335-1  
 GWT Certified

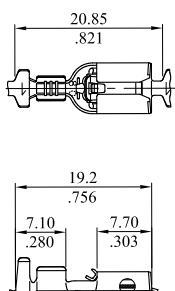
P/N 5011 S \*\* 0 \* \* \*  
**1 2 3 4 5 6**

- Series No.
- S=Socket
- No. of circuits
- 0=With lock  
N=Without lock
- Color  
0=White  
7=Blue
- See the table on page A43~A46

A=5.0mm(.197")x No. of spaces  
 B=A+5.0mm(.197")



## 5011 Terminal



## Features

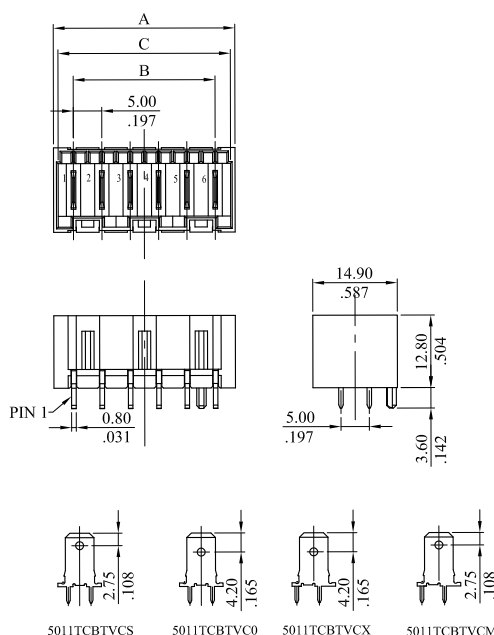
5011 Terminal:  
 Wire range: AWG 14~22

P/N LF \* \* \* 250FL \* S  
**1 2 3**

- N=Unplated  
T=Tin plated 120u"min.
- B=Brass C2680  
C=Phosphor bronze C5191  
S=SUS304 (withstand 300°C)
- C=For wire AWG14~18  
0=For wire AWG20~22



## 5011 Series 5.00mm (.197") Straight Header (Rast 5)



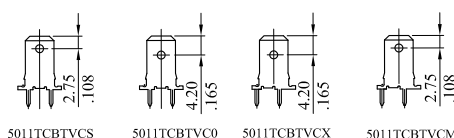
## Features

5011 Wafer:  
 Available in 2~12 circuits  
 Polarized with locking ribs  
 PA66+30%G/F UL94V-0  
 Mate with Leoco 5011 socket  
 Compliance with IEC 60335-1  
 GWT Certified

P/N 5011P \*\* V \* \* \*  
**1 2 3**

- No. of circuits
- Terminal  
T=Terminal(5011TCBTVCS)  
S=Terminal(5011TCBTVCS)  
X=Terminal(5011TCBTVCS)  
M=Terminal(5011TCBTVCS)  
V=Terminal(5011TCBTVCS)  
With special layout  
W=Terminal(5011TCBTVCS)  
With special layout
- See the table on page A43~A46

A=B+7.0mm(.276")  
 B=5.0mm(.197")x No. of spaces  
 C=B+5.2mm(.205")



# 5.00mm (.197") Wire to Board Connector

Unit:  $\frac{\text{mm}}{\text{Inch}}$

## Specifications

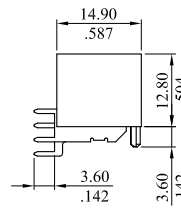
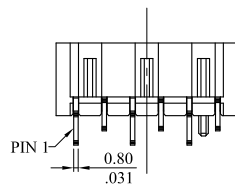
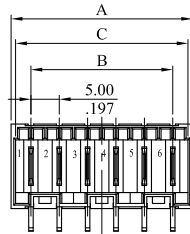
Current rating: 16A AC DC.  
 Voltage rating: 380V AC DC  
 Temperature rating: -40°C~+110°C  
 Contact resistance: 20mΩ max.  
 Insulation resistance: 1000MΩ min.  
 Withstanding voltage: 1800V AC/min.

## Standards

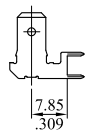
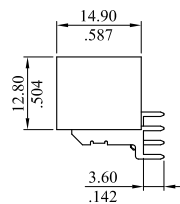
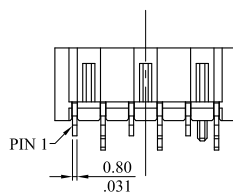
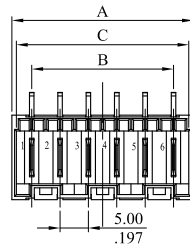
- Recognized No. E82349
- Approval No. 40017373
- RoHS Compliant

## 5011 Series 5.00mm (.197") Right Angle Header (Rast 5)

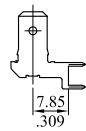
### Normal Type



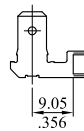
### Reverse Type



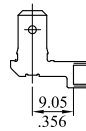
5011TCBTHC1



5011TCBTHC2



5011TCBTHD1



5011TCBTHD2

## Features

5011 Wafer:  
 Available in 2~12 circuits  
 Polarized with locking ribs  
 PA66+30%G/F UL94V-0  
 Mate with Leoco 5011 socket  
 Compliance with IEC 60335-1  
 GWT Certified

**P/N 5011P \*\* H \*\* \*\***  
**1 2 3 4**

- 1.No.of circuits
- 2.Type  
H=Normal type
- 3.Terminal  
T=Termianl (5011TCBTHC\*)  
L=Termianl (5011TCBTHC\*)  
J=Termianl (5011TCBTHC\*)  
with special layout  
G=Termianl (5011TCBTHD\*)  
with special layout
- 4.See the table on page A43~A46

A=B+7.0mm(.276")  
 B=5.0mm(.197")x No.of spaces  
 C=B+5.2mm(.205")

**P/N 5011P \*\* R \*\* \*\***  
**1 2 3 4**

- 1.No.of circuits
- 2.Type  
R=Reverse type
- 3.Terminal  
T=Termianl (5011TCBTHC\*)  
L=Termianl (5011TCBTHC\*)  
J=Termianl (5011TCBTHC\*)  
with special layout  
G=Termianl (5011TCBTHD\*)  
with special layout
- 4.See the table on page A43~A46

A=B+7.0mm(.276")  
 B=5.0mm(.197")x No.of spaces  
 C=B+5.2mm(.205")

# 5.00mm (.197") Wire to Board Connector

Unit:  $\frac{\text{mm}}{\text{Inch}}$

See from top side

TYPE	0A	0B	0C	0D	0E	0F	0G	0H	0I	0K	0L	0M	0N	
KEY/LOCK 2-way														
	0P	0Q	0R	0S	0T	0U	0X	0Z	09	10	11	48	80	86

TYPE	0A	0B	0C	0D	0E	0F	0G	0H	0I	0K	0L	0M	0N
KEY/LOCK 3-way													
	0Q	0W	02	03	04	05	10	12	13	1A	2N	2P	32
	38	40	44	53	65	80	81	98					

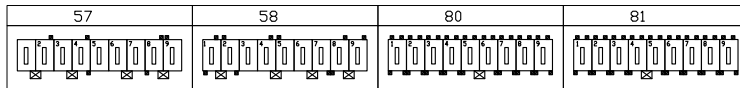
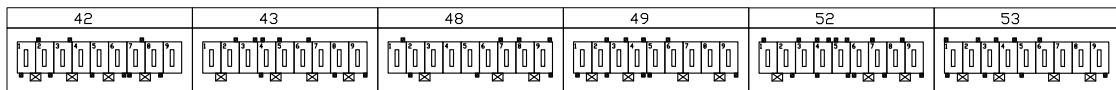
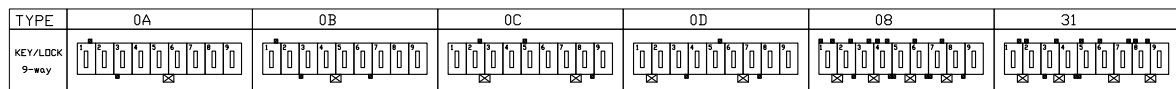
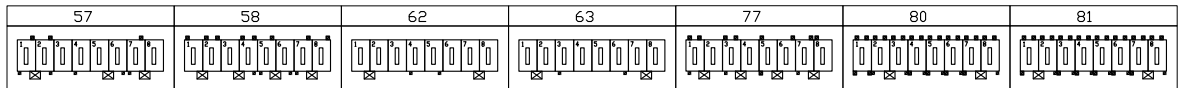
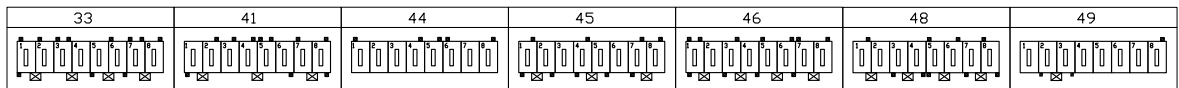
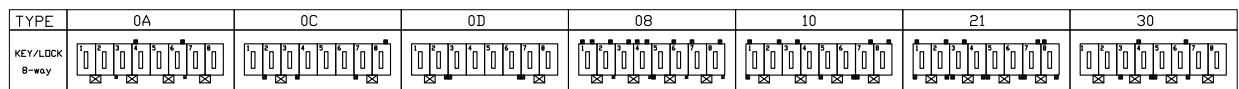
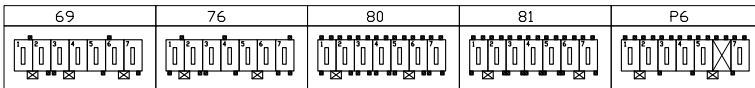
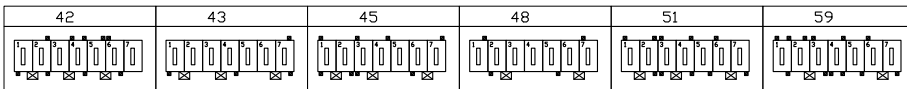
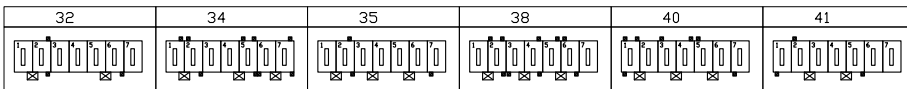
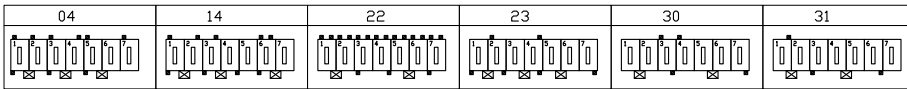
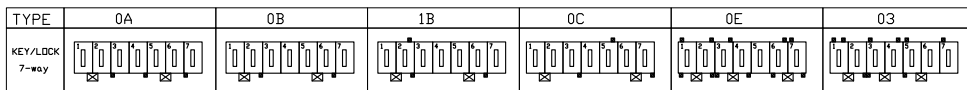
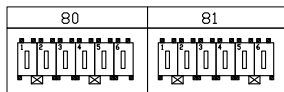
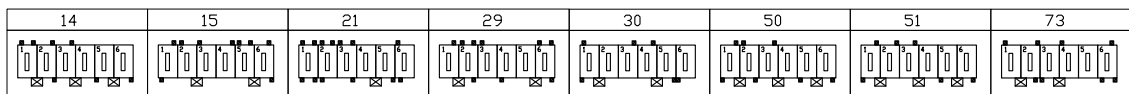
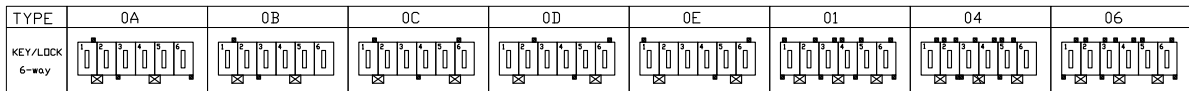
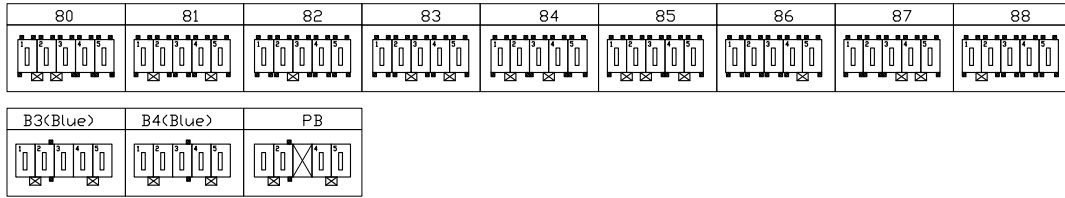
TYPE	0A	0B	0C	0D	0E	0F	0G	0H	0I	0J
KEY/LOCK 4-way										
	0K	0L	0M	0W	01	02	03	04	05	06
	17	19	37	43	63	65	80	81	82	84
	86	GA(Green)	PA	PB						

TYPE	0A	0B	0C	0D	0E	0F	0G	01	03
KEY/LOCK 5-way									
	04	05	06	07	08	09	11	12	13
	14	17	18	20	21	22	23	24	25
	26	27	28	29	30	31	32	33	34
	35	36	43	49	50	51	64	69	73

# 5.00mm (.197") Wire to Board Connector

Unit:  $\frac{\text{mm}}{\text{Inch}}$

See from top side



# 5.00mm (.197") Wire to Board Connector

Unit:  $\frac{\text{mm}}{\text{Inch}}$

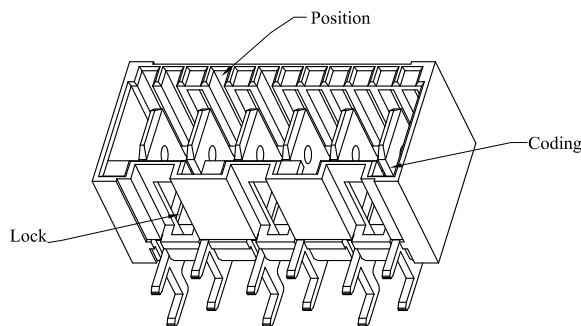
See from top side

TYPE	0A	01	02	30
KEY/LOCK 10-way				
	36	46	50	51
	52	64	70	72
	74	75	76	80

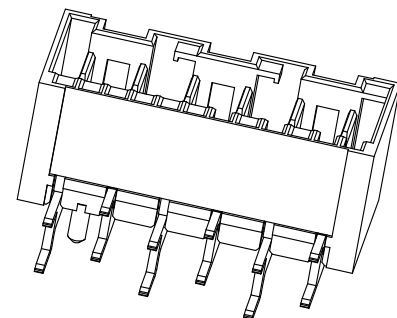
TYPE	0A	0B	0C	01
KEY/LOCK 11-way				
	13	33	55	60
	64	80		

TYPE	27	30	59	65
KEY/LOCK 12-way				
	80			

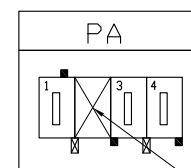
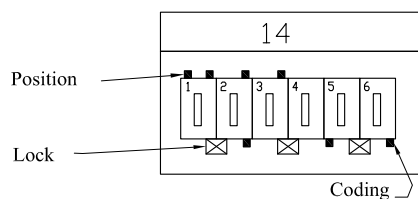
For example:



5011P06HT14



5011P06RT14

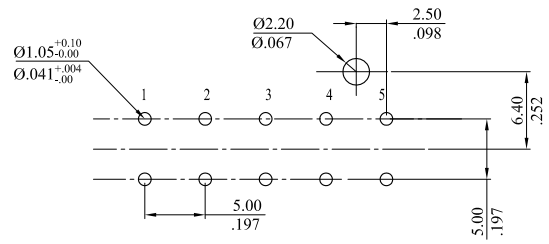


Empty Pin

# 5.00mm (.197") Wire to Board Connector

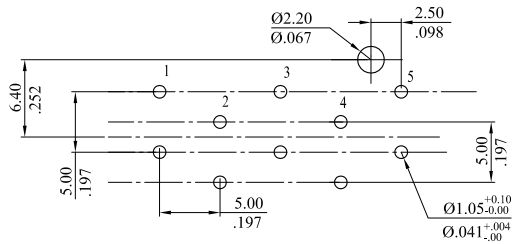
Unit:  $\frac{\text{mm}}{\text{Inch}}$

## Recommended PCB Layout



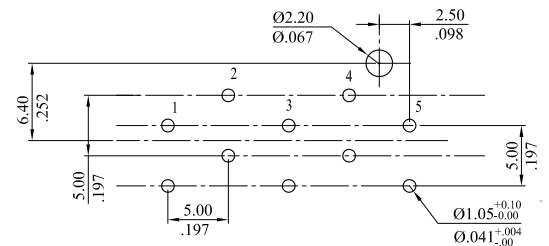
PCB layout I

(5011P\*\*VT\*\*/5011P\*\*VS\*\*)



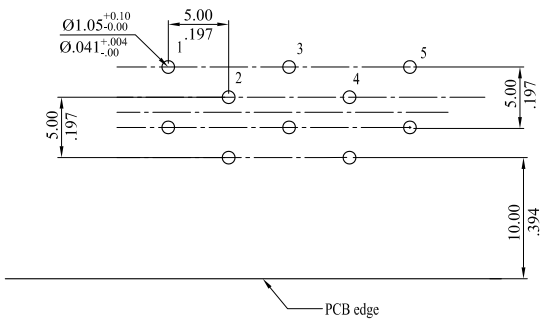
PCB layout II

(5011P\*\*VX\*\*/5011P\*\*VM\*\*)



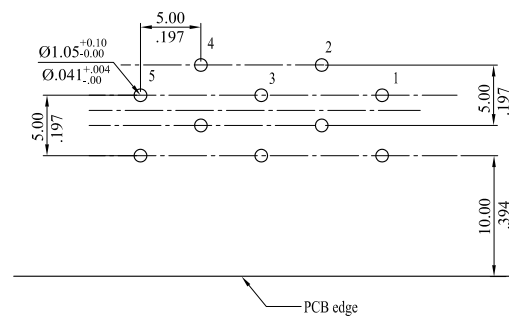
PCB special layout III

(5011P\*\*VV\*\*/5011P\*\*VW\*\*)



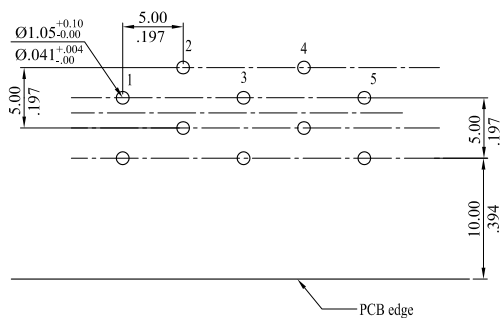
PCB layout for normal

(5011P\*\*HT\*\*/5011P\*\*HL\*\*)



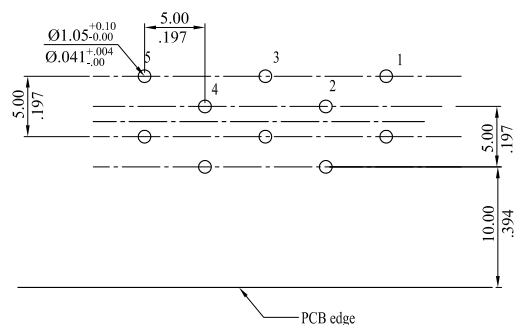
PCB layout for reverse

(5011P\*\*RT\*\*/5011P\*\*RL\*\*)



PCB special layout for normal

(5011P\*\*HJ\*\*/5011P\*\*HG\*\*)



PCB special layout for reverse

(5011P\*\*RJ\*\*/5011P\*\*RG\*\*)

# 5.08mm (.200") Wire to Board Connector

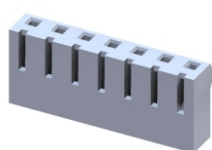
Unit:  $\frac{\text{mm}}{\text{Inch}}$

## Specifications

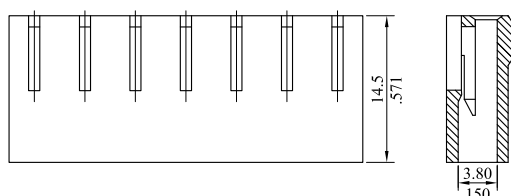
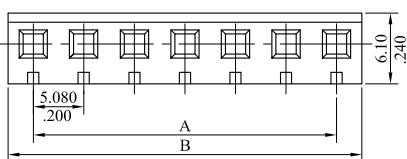
Current rating: 7A AC DC  
 Voltage rating: 250V AC DC  
 Temperature rating: -25°C~+105°C  
 Contact resistance: 20mΩ max.  
 Insulation resistance: 1000MΩ min.  
 Withstanding voltage: 1500V AC/min.

## Standards

Recognized No. E82349  
 RoHS Compliant



## 5080 Series 5.08mm (.200") Housing



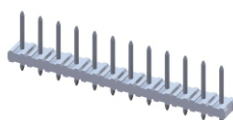
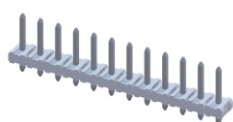
## Features

5080 Housing:  
 Available in 2~16 circuits  
 Polarized with locking ramp  
 Nylon 6/6 UL94V-0  
 Accepts Leoco 3983 and 3979 crimp terminal

**P/N 5080S \*\* 0000**  
**I**

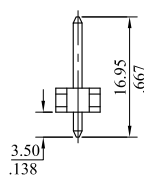
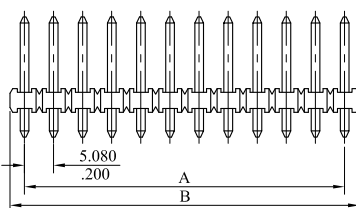
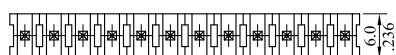
1.No.of circuits

A=5.08mm(.200")x No.of spaces  
 B=A+5.08mm(.200")



## 5086 Series 5.08mm (.200") Single Row Breakaway Header

Straight (V version)



## Features

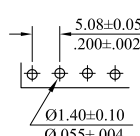
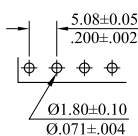
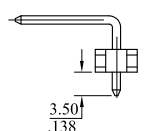
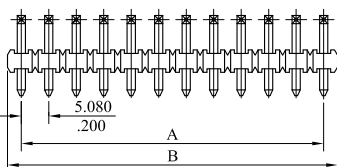
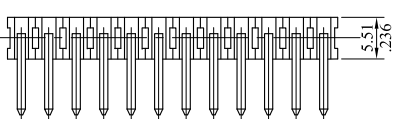
5086 Header:  
 Available in 2~20 circuits  
 Nylon 6/6 UL94V-0  
 Easy breakaway to desired circuits  
 With standoff minimize flux retention  
 1.14mm(.045") tin plated square or round pin options  
 PCB thickness 1.6mm

**P/N 5086P \*\* \* 000**  
**I 2**

- No. of circuits
- V= Straight (square pin) type  
 R= Straight (round pin) type  
 H= Right angle (square pin) type

A=5.08mm(.200")x No.of spaces  
 B=A+5.08mm(.200")

Right Angle (H version)



For square pin

For round pin

## Recommended PCB Layout

# 5.08mm (.200") Wire to Board Connector

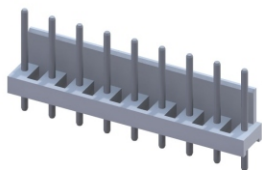
Unit:  $\frac{\text{mm}}{\text{Inch}}$

## Specifications

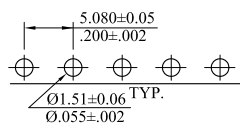
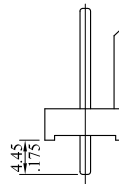
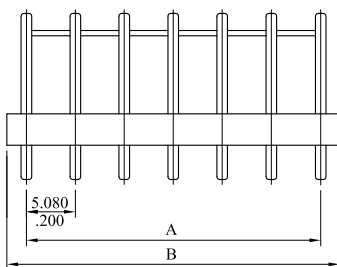
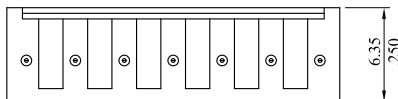
Current rating: 7A AC DC  
 Voltage rating: 250V AC DC  
 Temperature rating: -25°C~+105°C  
 Contact resistance: 20mΩ max.  
 Insulation resistance: 1000MΩ min.  
 Withstanding voltage: 1500V AC/min.

## Standards

RoHS Compliant



## 5083 Series 5.08mm (.200") Pitch Header, Vertical With Polarizing Back Wall



Recommended PCB Layout

## Features

5083 Header:  
 Available in 2~20 circuits  
 Nylon 6/6 UL94V-0  
 1.14mm(.045") round pin  
 Back wall for polarization to mating connector  
 PCB thickness 1.6mm

**P/N 5083P \*\* V \* 00**  
**1 2 3**

- 1.No. of circuits
- 2.V= Straight type
- 3.Plating  
 T= Tin plated 120u" min. over 30u"min. nickel overall  
 U= Gold flash over 30u"min. nickel overall

A=5.08mm(.200")x No. of spaces  
 B=A+3.00mm(.118")

# 5.08mm (.200") Wire to Board Connector

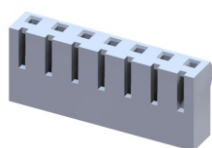
Unit:  $\frac{\text{mm}}{\text{Inch}}$

## Specifications

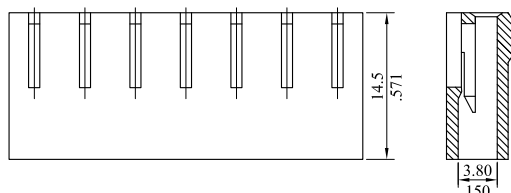
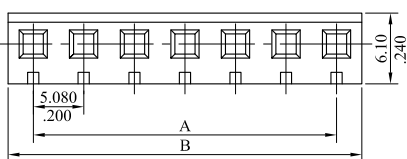
Current rating: 7A AC DC  
 Voltage rating: 250V AC DC  
 Temperature rating: -25°C~+105°C  
 Contact resistance: 20mΩ max.  
 Insulation resistance: 1000MΩ min.  
 Withstanding voltage: 1500V AC/min.

## Standards

Recognized No. E82349  
 RoHS Compliant



## 5080 Series 5.08mm (.200") Housing



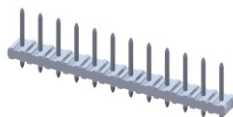
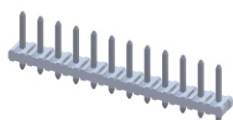
## Features

5080 Housing:  
 Available in 2~16 circuits  
 Polarized with locking ramp  
 Nylon 6/6 UL94V-0  
 Accepts Leoco 3983 and 3979 crimp terminal

**P/N 5080S \*\* 0000**  
**I**

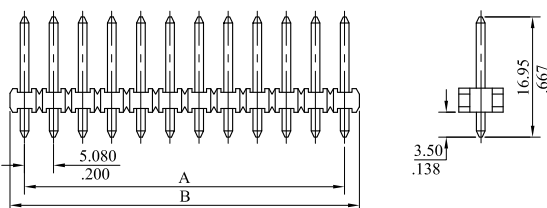
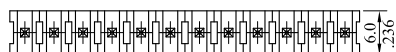
1.No.of circuits

A=5.08mm(.200")x No.of spaces  
 B=A+5.08mm(.200")



## 5086 Series 5.08mm (.200") Single Row Breakaway Header

Straight (V version)



## Features

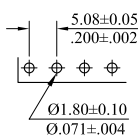
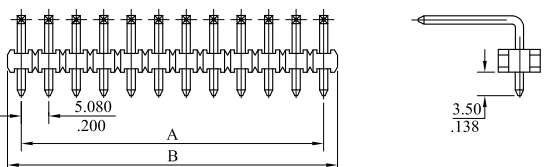
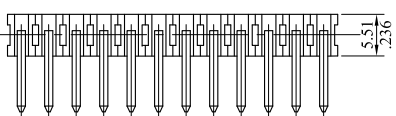
5086 Header:  
 Available in 2~20 circuits  
 Nylon 6/6 UL94V-0  
 Easy breakaway to desired circuits  
 With standoff minimize flux retention  
 1.14mm(.045") tin plated square or round pin options  
 PCB thickness 1.6mm

**P/N 5086P \*\* \* 000**  
**I 2**

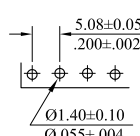
- No. of circuits
- V= Straight (square pin) type  
 R= Straight (round pin) type  
 H= Right angle (square pin) type

A=5.08mm(.200")x No.of spaces  
 B=A+5.08mm(.200")

Right Angle (H version)



For square pin



For round pin

## Recommended PCB Layout

# 5.08mm (.200") Wire to Board Connector

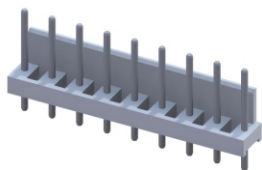
Unit:  $\frac{\text{mm}}{\text{Inch}}$

## Specifications

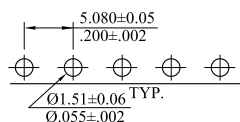
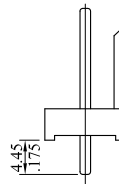
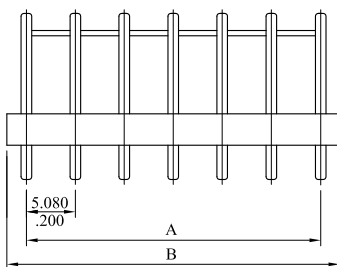
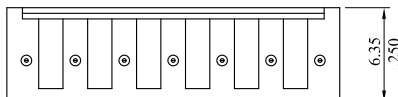
Current rating: 7A AC DC  
 Voltage rating: 250V AC DC  
 Temperature rating: -25°C~+105°C  
 Contact resistance: 20mΩ max.  
 Insulation resistance: 1000MΩ min.  
 Withstanding voltage: 1500V AC/min.

## Standards

RoHS Compliant



## 5083 Series 5.08mm (.200") Pitch Header, Vertical With Polarizing Back Wall



Recommended PCB Layout

## Features

5083 Header:  
 Available in 2~20 circuits  
 Nylon 6/6 UL94V-0  
 1.14mm(.045") round pin  
 Back wall for polarization to mating connector  
 PCB thickness 1.6mm

**P/N 5083P \*\* V \* 00**  
**1 2 3**

- 1.No. of circuits
- 2.V= Straight type
- 3.Plating  
 T= Tin plated 120u" min. over 30u"min. nickel overall  
 U= Gold flash over 30u"min. nickel overall

A=5.08mm(.200")x No. of spaces  
 B=A+3.00mm(.118")