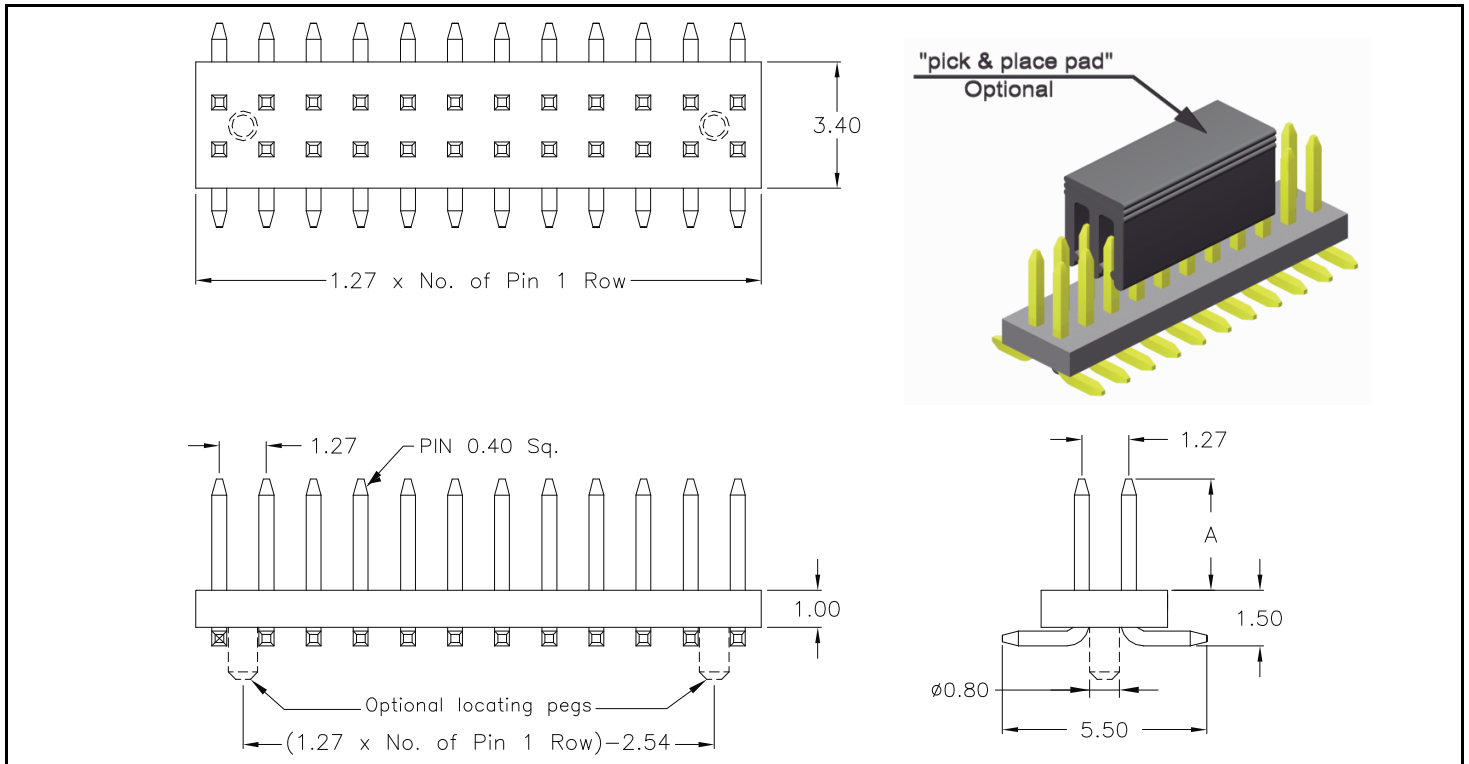


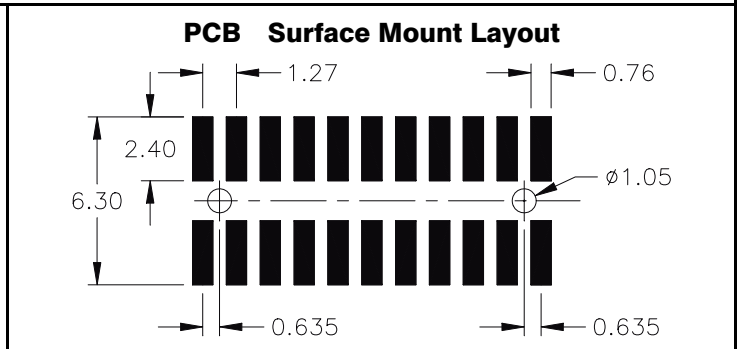
1.27mm pitch Pin Header

- SMT - low profile dual row



APPLICATION AND FEATURES

- **Standard: tube packing and without "locating pegs"**
- Assures reliable PC Board connections
- Low profile insulator
- Mates with 1.27mm pitch Female Headers



SPECIFICATIONS

Current rating	1 A	Operating temperature	- 40°C to +105°C
Insulator resistance	1000 MΩ min.	Processing temperature	+250°C +0/-5°C for 10sec.
Withstanding voltage	500 V AC	Contact material	(RoHS compliant) Copper alloy
		Insulator material	(RoHS compliant) Nylon UL 94 V-0

How to order
SS2 - xxx - H xx/x - 55 /11 X

Nbr of pins	Pin code	DIM "A"	Plating	Packing and "pick & place pad" Option
without locating pegs: 006 to 100	70/0	3.00 mm	55 = gold	without "locating pegs"
	70/1	10.00 mm		A = tube packing; with pick & place pad
	70/2	6.50 mm	Other platings on request	B = reel packing; with pick & place pad
with locating pegs: 008 to 100	Other dimensions on request			with "locating pegs" (available only from 008 to 100 pins)
				C = tube packing; without pick & place pad
				D = tube packing; with pick & place pad
				E = reel packing; with pick & place pad