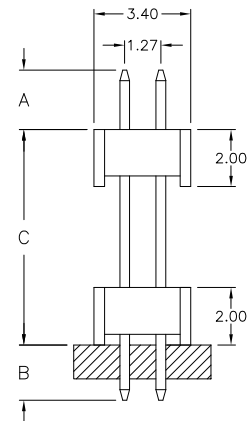
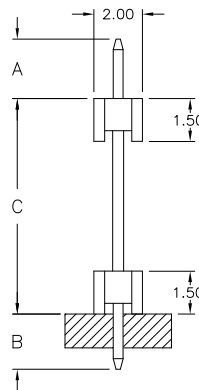
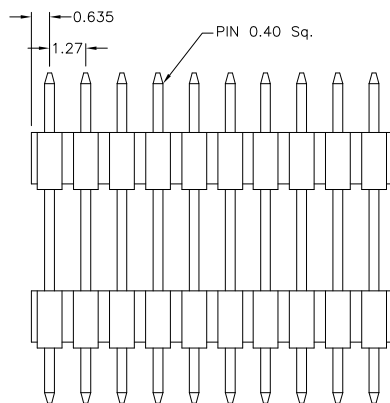
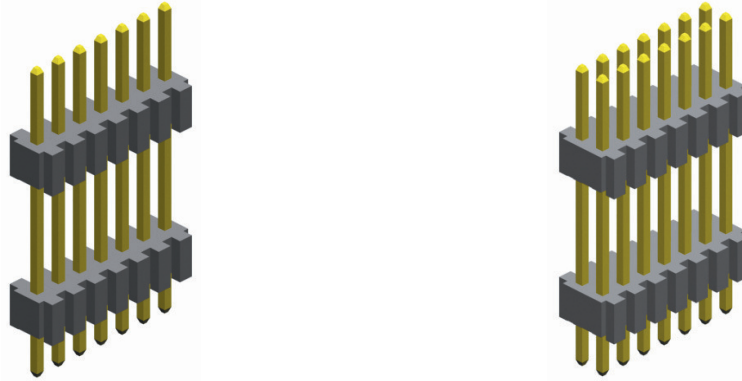
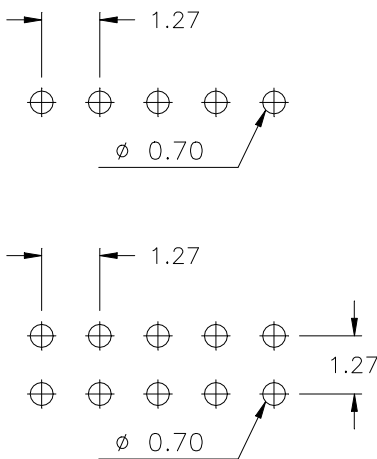


1.27mm pitch Board Spacer
- THT - single & dual row



PCB Hole Layout



SPECIFICATIONS

Current rating	1 A
Insulator resistance	1000 MΩ min.
Withstanding voltage	500 V AC
Operating temperature	- 40°C to +105°C
Contact material	Copper alloy <i>(RoHS compliant)</i>
Insulator material	Nylon UL 94 V-0 <i>(RoHS compliant)</i>

Pin code	DIM "A"	DIM "B"	DIM "C"
162/1	5.70 mm	5.70 mm	4.80 mm
179/0	5.85 mm	5.85 mm	6.15 mm
130/2	3.70 mm	2.30 mm	7.00 mm
130/3	3.00 mm	3.00 mm	7.00 mm
150/2	4.00 mm	3.00 mm	8.00 mm
127/1	2.20 mm	2.20 mm	8.30 mm
152/2	3.60 mm	2.60 mm	9.00 mm
180/3	4.00 mm	4.00 mm	10.00 mm
205/1	3.00 mm	6.50 mm	11.00 mm
190/1	3.00 mm	3.00 mm	13.00 mm
220/1	6.00 mm	3.00 mm	13.00 mm
200/1	3.00 mm	3.00 mm	14.00 mm
230/1	3.00 mm	6.00 mm	14.00 mm
210/4	3.50 mm	3.00 mm	14.50 mm
230/2	3.00 mm	3.00 mm	17.00 mm
244/2	4.00 mm	3.00 mm	17.40 mm
265/1	4.60 mm	3.00 mm	18.90 mm

Other dimensions on request

How to order

SP x - xxx - S xxx/x - 55 /11

