

3.96mm (.156") Wire to Board Connector

Unit: $\frac{\text{mm}}{\text{Inch}}$

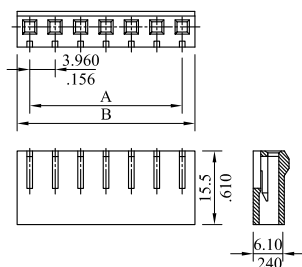
Specifications

Current rating: 7A AC DC
 Voltage rating: 250V AC DC
 Temperature rating: -40°C~+105°C
 Contact resistance: 20mΩ max.
 Insulation resistance: 1000MΩ min.
 Withstanding voltage: 1500V AC/min.

Standards

- Recognized No. E82349
- Certified No. LR65731
- RoHS Compliant

3940 Series 3.96mm (.156") Housing



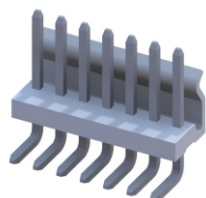
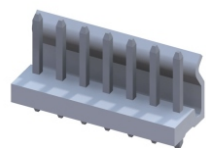
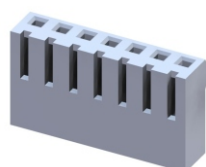
Features

3940 Housing:
 Available in 2~20 circuits
 Polarized with locking ramp
 Nylon 6/6 UL94V-0
 Accepts Leoco 3979 and 3983 crimp terminal
 Mates with Leoco 3941 and 3986 header

P/N 3940S $\frac{**}{1} \frac{00}{2} **$

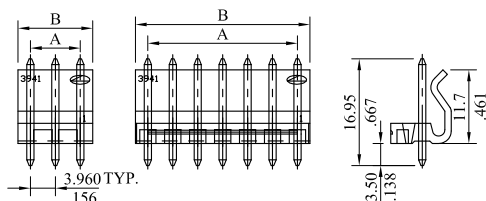
- 1.No.of circuits
- 2.00=Material Nylon 66 UL94V-0
- E0=Material Nylon 66 UL94V-2

A=3.96mm(.156")x No.of spaces
 B=A+4.54mm(.179")



3941 Series 3.96mm (.156") Header

Straight (V version)



2~3 circuits 4~20 circuits

Features

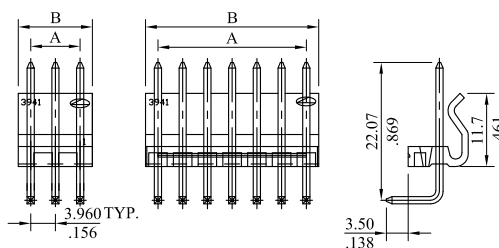
3941 Header:
 Available in 2~20 circuits
 Polarized with friction lock
 Nylon 6/6 UL94V-0
 1.14mm(.045") square pin or round pin
 PCB thickness 1.6mm

P/N 3941P $\frac{**}{1} \frac{**}{2} \frac{**}{3} 0$

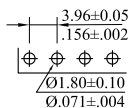
- 1.No.of circuits
- 2.V= Straight (square pin) type
- R= Straight (round pin) type
- H= Right angle (square pin) type
- 3.00=Material Nylon 66 UL94V-0
- 0E=Material Nylon 66 UL94V-2

A=3.96mm(.156")x No.of spaces
 B=A+3.94mm(.155")

Right Angle (H version)

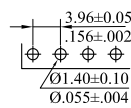


2~3 circuits 4~20 circuits



For square pin

Recommended PCB Layout



For round pin

Recommended PCB Layout

3.96mm (.156") Wire to Board Connector

Unit: $\frac{\text{mm}}{\text{Inch}}$

Specifications

Current rating: 7A AC DC
 Voltage rating: 250V AC DC
 Temperature rating: -25°C~+105°C
 Contact resistance: 20mΩ max.
 Insulation resistance: 1000MΩ min.
 Withstanding voltage: 1500V AC/min.

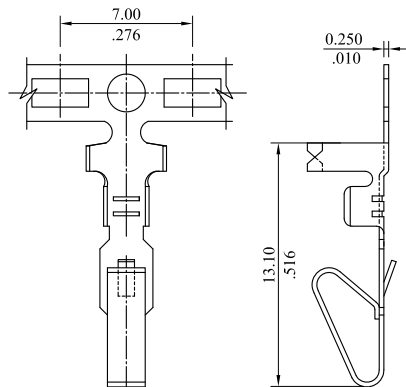
Standards

Recognized No. E82349

Certified No. LR65731

RoHS Compliant

3979T Crimping Terminal



Features

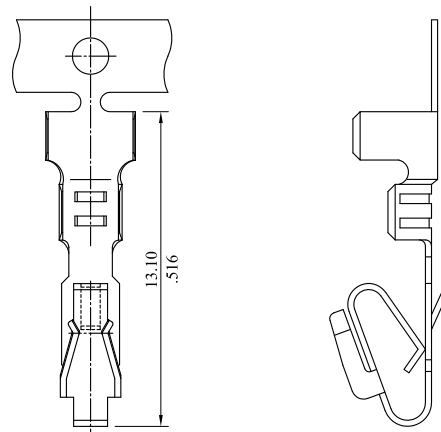
3979 Terminal:
 Wire range: AWG 18~24

P/N 3979TPB0000

Phosphor bronze/Tin plated
 Package: 5K PCS/Reel
 Work with 3940, 5000 and
 5080, 7500 housing



3983T Crimping Terminal



Features

3983 Terminal:
 Wire range: AWG 18~24

P/N 3983TPB0000

Phosphor bronze/Tin plated
 Package: 5K PCS/Reel
 Work with 3940, 5000 and
 5080, 7500 housing

3.96mm (.156") Wire to Board Connector

Unit: $\frac{\text{mm}}{\text{Inch}}$

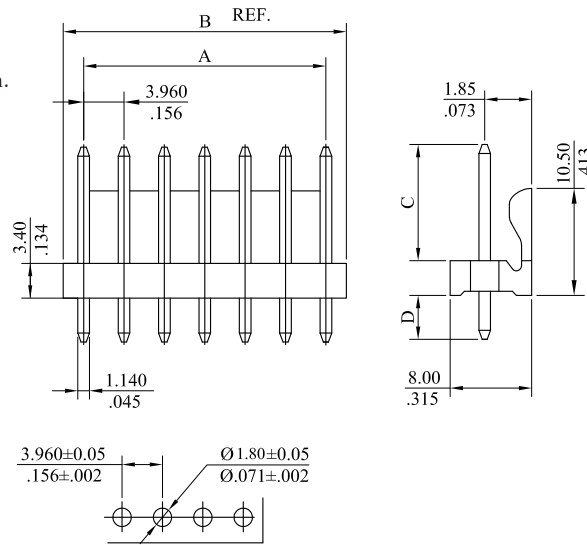
Specifications

Current rating: 7A AC DC
 Voltage rating: 250V AC DC
 Temperature rating: -25°C~+85°C
 Contact resistance: 20mΩ max.
 Insulation resistance: 1000MΩ min.
 Withstanding voltage: 1000V AC/min.

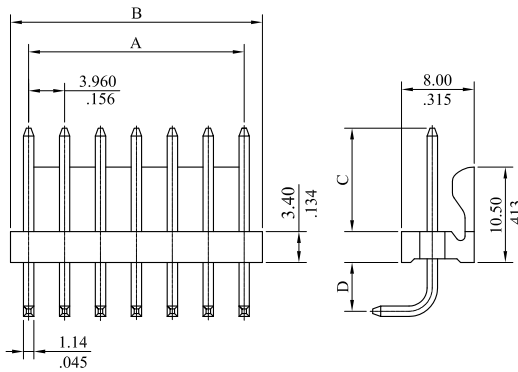
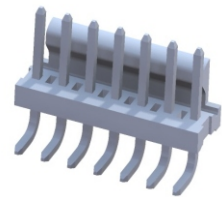
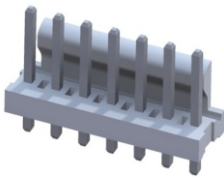
Standards

Recognized No. E82349
 RoHS Compliant

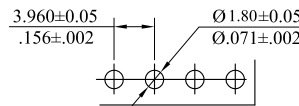
3943 Series 3.96mm (.156") Header



Recommended PCB Layout



Recommended PCB Layout



Features

3943 Header:
 Available in 2~15 circuits
 Insulator: Nylon6/6 UL94V-0
 Contact: Brass
 Plating: Tin plated

P/N 3943 P ** V * 00

- | 1 | 2 | 3 | 4 |
|--------------------------|---|---|---|
| Series No. | | | |
| No. of circuits | | | |
| V= Straight type | | | |
| Length of pin | | | |
| 0: Standard type | | | |
| Dim.C=10.15mm (.400") | | | |
| Dim.D=3.40mm (.134") | | | |
| A: Dim.C=10.15mm (.400") | | | |
| Dim.D=4.00mm (.157") | | | |

A=No. of spaces x 3.96mm (.156")
 B=A+3.96mm (.156")

Features

3943 Header:
 Available in 2~15 circuits
 Insulator: Nylon6/6 UL94V-0
 Contact: Brass
 Plating: Tin plated

P/N 3943 P ** H * 00

- | 1 | 2 | 3 | 4 |
|--------------------------|---|---|---|
| Series No. | | | |
| No. of circuits | | | |
| H= Right angle type | | | |
| Length of pin | | | |
| 0: Standard type | | | |
| Dim.C=10.15mm (.400") | | | |
| Dim.D=3.40mm (.134") | | | |
| A: Dim.C=10.15mm (.400") | | | |
| Dim.D=4.00mm (.157") | | | |

A=No. of spaces x 3.96mm (.156")
 B=A+3.96mm (.156")

3.96mm (.156") Wire to Board Connector

Unit: $\frac{\text{mm}}{\text{Inch}}$

Specifications

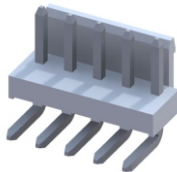
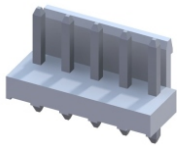
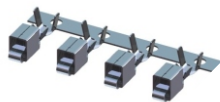
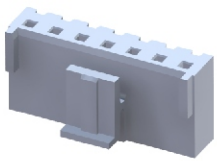
Current rating: 7A AC DC
 Voltage rating: 250V AC DC
 Temperature rating: -40°C~+105°C
 Contact resistance: 20mΩ max.
 Insulation resistance: 1000MΩ min.
 Withstanding voltage: 1500V AC/min.

Standards

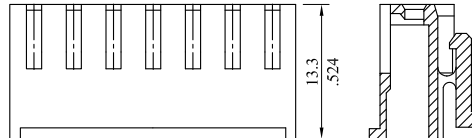
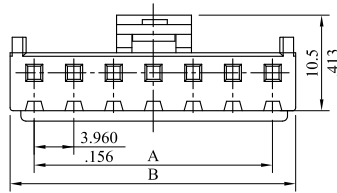
Recognized No. E82349

Certified No. LR65731

RoHS Compliant



3950 Series 3.96mm (.156") Housing



Features

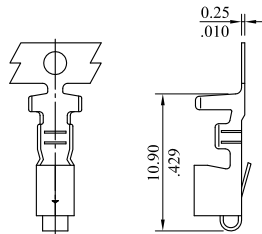
3950 Housing:
 Available in 2~12 circuits
 Polarized and with locking mechanism
 Nylon 6/6 UL94V-0

P/N 3950S ** 000 $\frac{*}{1}$ $\frac{*}{2}$

- No. of circuits
- Housing color option
 0=White 1=Black

A=3.96mm(.156")x No. of spaces
 B=A+4.72mm(.186")

3953T Crimping Terminal



Features

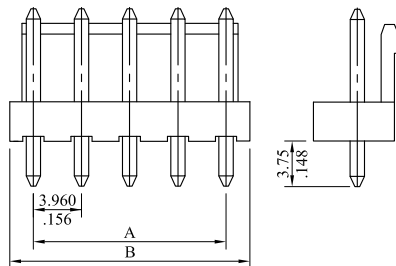
3953 Terminal:
 Mates with 1.14mm (.045") square pin
 Phosphor bronze/Tin plated
 Wire range: AWG 18~22

P/N 3953TPB00V2

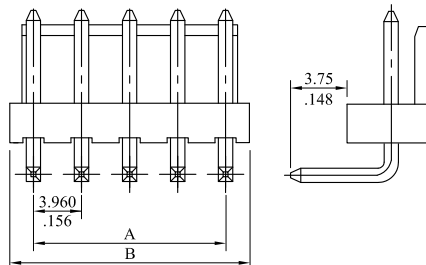
Package: 3K PCS/Reel

3951 Series 3.96mm (.156") Header

Straight (V version)



Right Angle (H version)



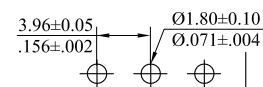
Features

3951 Header:
 Available in 2~12 circuits
 Polarized and with locking ramp
 Nylon 6/6 UL94V-0
 1.14mm(.045") square pin
 PCB thickness 1.6mm

P/N 3951P ** * 000 $\frac{*}{1}$ $\frac{*}{2}$

- No. of circuits
- V= Straight type
 H= Right angle type

A=3.96mm(.156")x No. of spaces
 B=A+3.94mm(.155")



Recommended PCB Layout

3.96mm (.156") Wire to Board Connector

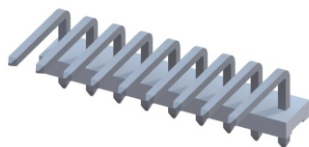
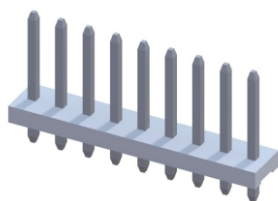
Unit: $\frac{\text{mm}}{\text{Inch}}$

Specifications

Current rating: 7A AC DC
 Voltage rating: 250V AC DC
 Temperature rating: -25°C~+105°C
 Contact resistance: 20mΩ max.
 Insulation resistance: 500MΩ min.
 Withstanding voltage: 500V AC/min.

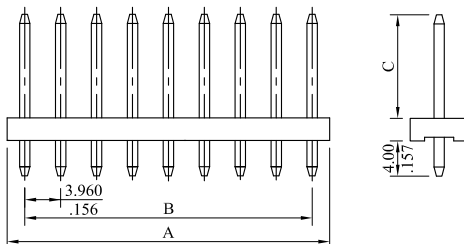
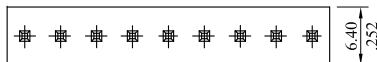
Standards

RoHS Compliant

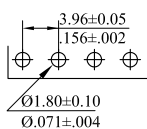
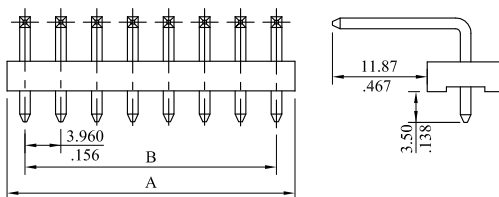
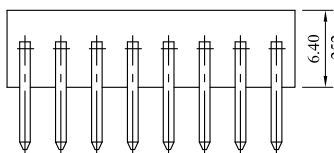


3968 Series 3.96mm (.156") Single Row Header

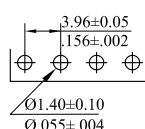
Straight (V version)



Right Angle (H version)



For square pin



For round pin

Features

3968 Header:
 Available in 2~20 circuits
 Nylon 6/6 UL94V-0
 Mates with Leoco 3940 socket
 1. 1.4mm(.045") tin plated square or round pin options
 Plating options are available
 Pin omit options are available in any circuits

P/N 3968P $\frac{**}{1}$ $\frac{V}{2}$ $\frac{*}{3}$ $\frac{**}{4}$

- No. of circuits
- V= Straight (square pin) type
 R= Straight (round pin) type
 H= Right angle (square pin) type
- Pin length options
 0: Dim.C=9.95mm(.392")
 A: Dim.C=12.92mm(.509")
 B: Dim.C=22.00mm(.866")
 P: Empty circuits
- Special options
 00= Standard
 01= Empty pin2

A=B+3.96mm(.156")
 B=3.96mm(.156")x No. of spaces

Recommended PCB Layout

3.96mm (.156") Wire to Board Connector

Unit: $\frac{\text{mm}}{\text{Inch}}$

Specifications

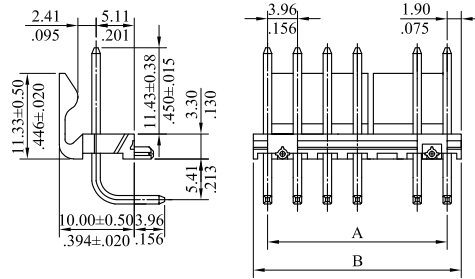
Current rating: 7A AC DC max.
 Voltage rating: 250V AC DC
 Temperature rating: -40°C ~ +105°C
 Contact resistance: 20mΩ max.
 Insulation resistance: 1000MΩmin.
 Withstanding voltage: 1500V AC/min.

Standards

Recognized No. E82349

RoHS Compliant

3972 Series 3.96mm (.156") Header Assembly Friction Lock Right Angle with Pegs



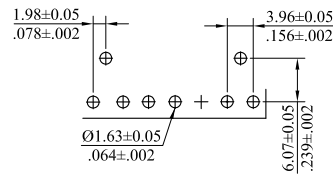
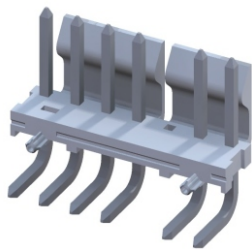
Features

3972 Header:
 Available in 2~7 circuits
 Insulator: Nylon 6/6 UL94V-0
 Contact : Brass/Tin plated
 1.14mm(.045") square pin

P/N 3972P ** H P 04
1 2 3

1. No. of circuits
2. H: Right angle type
3. 04: Empty circuits No. 3

A=3.96mm (.156") x No. of spaces
 B=A+3.96mm (.156")



Recommended PCB Layout

3.96mm (.156")/5.08mm (.200") Wire to Board Connector

Unit: $\frac{\text{mm}}{\text{Inch}}$

Specifications

Current rating: 7A AC DC
 Voltage rating: 250V AC DC
 Temperature rating: -25°C ~ +85°C
 Contact resistance: 10mΩ max.
 Insulation resistance: 1000MΩ min.
 Withstanding voltage: 1500V AC/min.

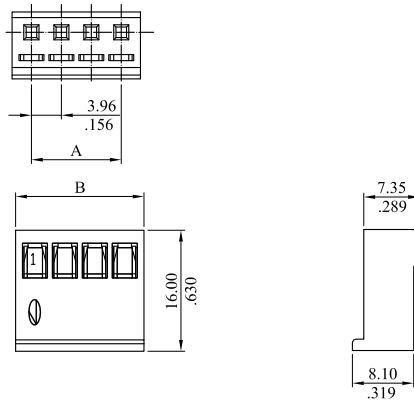
Standards

Recognized No. E82349
 RoHS Compliant



3976 Series 3.96mm (.156") Housing

3976S**00GT



Features

3976 Housing:
 Available in 2~12 circuits
 Insulator: UL94V-0 PA6 & PA66
 Accepts Leoco 3976 crimp terminal
 Mates with 3951 friction lock header
 Compliance with IEC 60335-1
 GWT Certified

P/N 3976 S ** 00GT

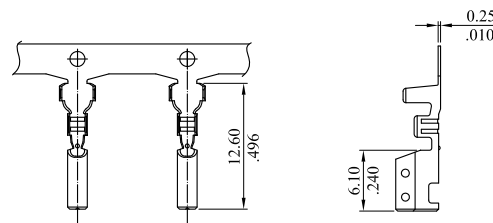
1 2

1. Series No.
2. No. of circuits

A=3.96mm(.156") x No. of spaces
 B=A+5.1mm(.201")

3976T Series Crimping Terminal

3976TCB00V1



Features

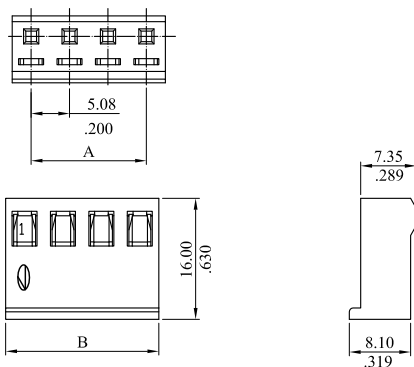
3976 Terminal:
 3976 terminal mates with 1.14mm (.045") square pin
 Brass / Tin plated
 Wire range: AWG 18~24

P/N 3976TCB00V1

Package: 3.5K PCS/Reel

5092 Series 5.08mm (.200") Housing

5092S**00GT



Features

5092 Housing:
 Available in 2~9 circuits
 PA6&PA66,UL94V-0
 Accepts Leoco 3976 crimp terminal
 Mates with 5086 friction lock header
 Compliance with IEC 60335-1
 GWT Certified

P/N 5092 S ** 00GT

1 2

1. Series No.
2. No. of circuits

A=5.08mm(.200") x No. of spaces
 B=A+5.0mm(.197")

3.96mm (.156") Wire to Board Connector

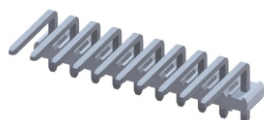
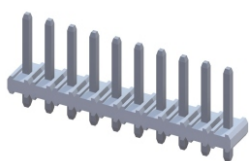
Unit: $\frac{\text{mm}}{\text{Inch}}$

Specifications

Current rating: 7A AC DC
 Voltage rating: 250V AC DC
 Temperature rating: -25°C ~ +105°C
 Contact resistance: 20mΩ max.
 Insulation resistance: 1000MΩ min.
 Withstanding voltage: 500V AC/min.

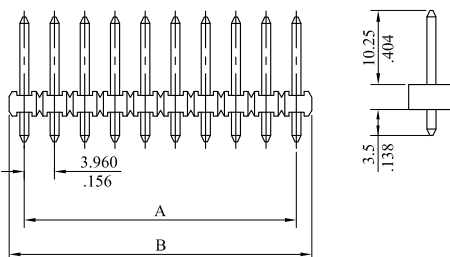
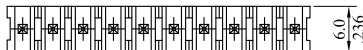
Standards

Recognized No. E82349
 RoHS Compliant

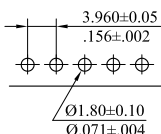
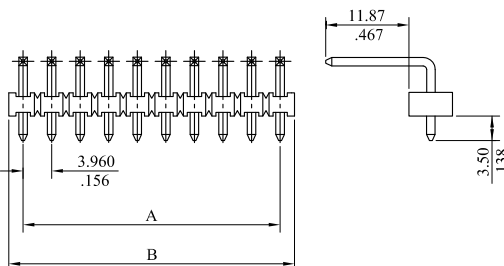
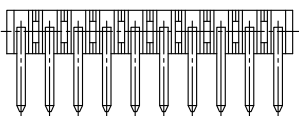


3986 Series 3.96mm (.156") Single Row Breakaway Header

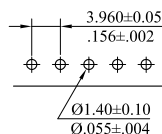
Straight (V version)



Right Angle (H version)



For square pin



For round pin

Features

3986 Header:
 Available in 2~20 circuits
 Nylon 6/6 UL94V-0
 Easy breakaway to desired circuits
 With standoff minimize flux retention
 Mates with Leoco 3940 socket
 1.14mm (.045") tin plated square or round pin options
 Plating options are available
 Pin omit options are available in any circuits

P/N 3986P ** V 000

I 2

1. No. of circuits
2. V= Straight (square pin) type
 R= Straight (round pin) type
 H= Right angle (square pin) type

A= 3.96mm (.156") x No. of spaces
 B= A+ 3.96mm (.156")

Recommended PCB Layout