

# 2.54mm (.100") Wire to Board Connector

Unit:  $\frac{\text{mm}}{\text{Inch}}$

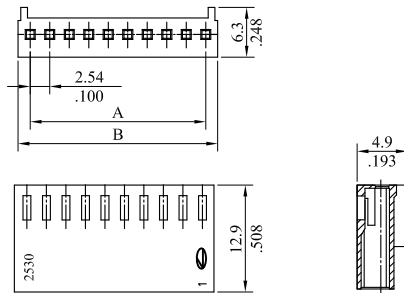
## Specifications

Current rating: 3A AC DC  
 Voltage rating: 250V AC DC  
 Temperature rating: -40°C~+105°C  
 Contact resistance: 20mΩ max.  
 Insulation resistance: 1000MΩ min.  
 Withstanding voltage: 1000V AC/min.

## Standards

Recognized No. E82349  
 RoHS Compliant

## 2530 Series 2.54mm (.100") Housing



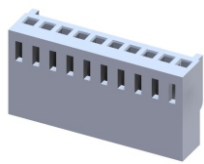
## Features

2530 Housing:  
 Available in 2~20 circuits  
 Polarized with locking ramp  
 Nylon 6/6 UL94V-0

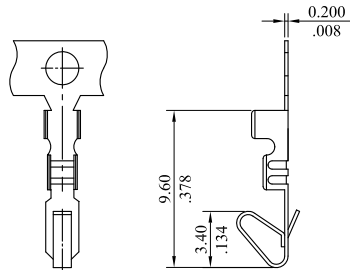
P/N 2530S  $\frac{**}{1} \frac{0}{2} \frac{**}{00}$

- 1.No.of circuits
2. 0=With ramp+lock  
N=Without ramp+lock

A=2.54mm(.100")x No.of spaces  
 B=A+3.16mm(.124")



## 2533T Crimping Terminal

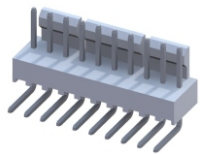
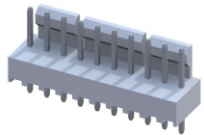


## Features

2533 Terminal:  
 Mates with 0.64mm (.025") square pin  
 Phosphor bronze/Tin plated  
 Wire range:AWG 22~28

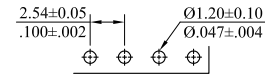
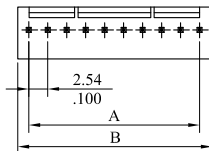
P/N 2533TPB0000

Package:8K PCS/Reel

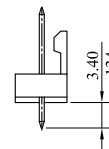
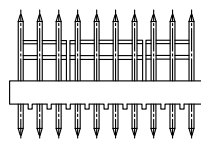


## 2571 Series 2.54mm (.100") Header

Straight (V version)



Recommended PCB Layout



## Features

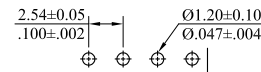
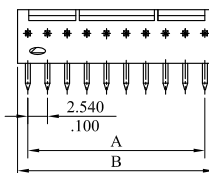
2571 Header:  
 Available in 2~20 circuits  
 Polarization friction lock  
 Nylon 6/6 UL94V-2  
 0.64mm (.025") square pin  
 2531, 2571: Mates with Leoco 2530 socket  
 PCB thickness 1.6mm

P/N 2571P  $\frac{**}{1} \frac{**}{2} \frac{**}{000}$

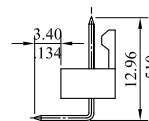
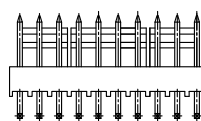
- 1.No.of circuits
- 2.V=Straight type  
H=Right angle type

A=2.54mm(.100")x No.of spaces  
 B=A+2.56mm(.101")

Right Angle (H version)



Recommended PCB Layout



# 2.54mm (.100") Wire to Board Connector

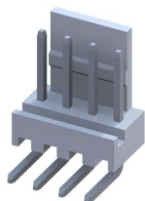
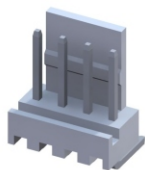
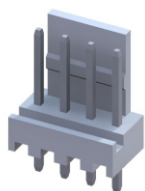
Unit:  $\frac{\text{mm}}{\text{Inch}}$

## Specifications

Current rating: 3A AC DC  
 Voltage rating: 250V AC DC  
 Temperature rating: -40°C~+105°C  
 Contact resistance: 20mΩ max.  
 Insulation resistance: 1000MΩ min.  
 Withstanding voltage: 1000V AC/min.

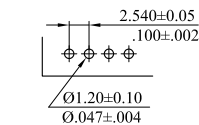
## Standards

Recognized No. E82349  
 RoHS Compliant

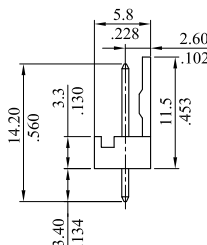
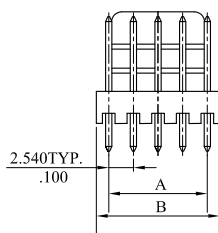


## 2531 Series 2.54mm (.100") Header

Straight (V version)

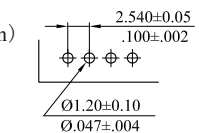
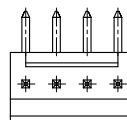


Recommended PCB Layout

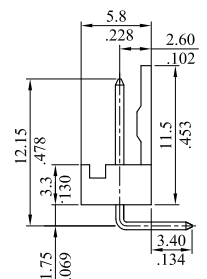
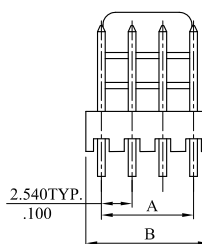


Recommended PCB Layout

Right Angle (H version)

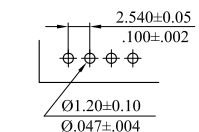
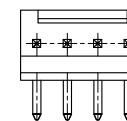


Recommended PCB Layout

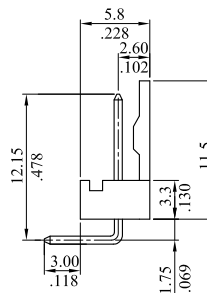
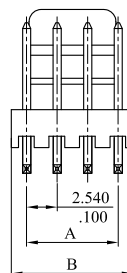


Recommended PCB Layout

Right Angle (H version - Reverse type)



Recommended PCB Layout



## 2.54mm (.100") / 3.96mm (.156") Wire to Board Connector

Unit:  $\frac{\text{mm}}{\text{Inch}}$

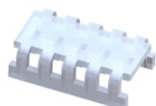
### Specifications

Current rating: 7A AC DC  
 Voltage rating: 250V AC DC  
 Temperature rating: -40°C ~ +105°C  
 Contact resistance: 10mΩ max.  
 Insulation resistance: 1000MΩ min.  
 Withstanding voltage: 1500V AC/min.

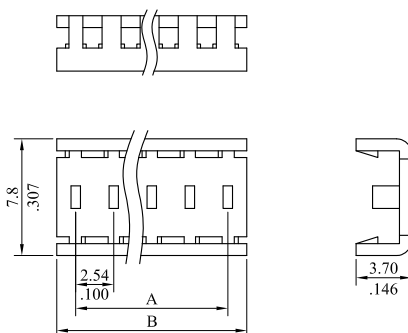
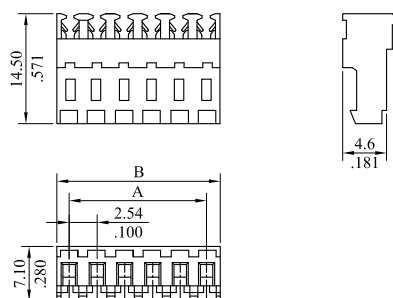
### Standards

Recognized No. E82349

RoHS Compliant



### 2547 Series 2.54mm (.100") Center Mass Terminated Connector



### Features

2547 Connector:  
 Available in 2~28 circuits  
 Nylon 6/6 UL94V-2  
 Brass

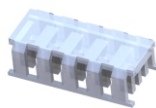
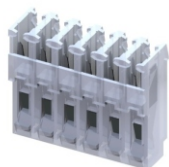
P/N 2547S                        

- 1 2 3
- No. of circuits
  - Color  
 00=Natural 30=Red  
 60=Green 70=Blue
  - Wire range:  
 22=22 AWG  
 24=24 AWG  
 26=26 AWG  
 28=28 AWG

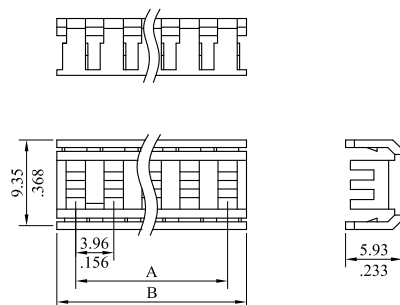
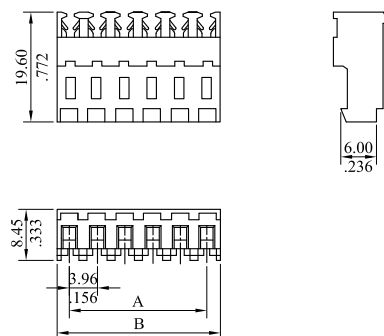
P/N 2547C                         \*

- 1 2 3
- C=Cover
  - No. of circuits
  - Color  
 0=Natural  
 3=Red  
 6=Green  
 7=Blue

A=2.54mm (.100") x No. of spaces  
 B=A+2.54mm (.100")



### 3969 Series 3.96mm (.156") Center Mass Terminated Connector



### Features

3969 Connector:  
 Available in 2~15 circuits  
 Nylon 6/6 UL94V-2  
 Brass

P/N 3969S                        

- 1 2 3
- No. of circuits
  - Color  
 00=Natural 30=Red  
 60=Green 70=Blue
  - Wire range:  
 18=18 AWG  
 20=20 AWG  
 22=22 AWG  
 24=24 AWG  
 26=26 AWG

P/N 3969C                         \*

- 1 2 3
- C=Cover
  - No. of circuits
  - Color  
 0=Natural  
 3=Red  
 6=Green  
 7=Blue

A=3.96mm (.156") x No. of spaces  
 B=A+3.96mm (.156")

# 2.54mm (.100") Wire to Board Connector

Unit:  $\frac{\text{mm}}{\text{Inch}}$

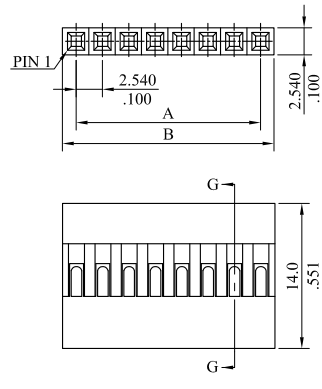
## Specifications

Current rating: 3A AC DC  
 Voltage rating: 250V AC DC  
 Temperature rating: -25°C~+105°C  
 Contact resistance: 20mΩ max.  
 Insulation resistance: 1000MΩ min.  
 Withstanding voltage: 1000V AC/min.

## Standards

Recognized No. E82349  
 RoHS Compliant

## 2665 Series 2.54mm (.100") Single Row Housing



## Features

2665 Housing:  
 Available in 2~40 circuits  
 Can be used with Leoco 6001 polarizing key  
 Thermoplastic UL94V-1  
 Color: Black  
 Accepts Leoco 2653, 2663 crimp terminal

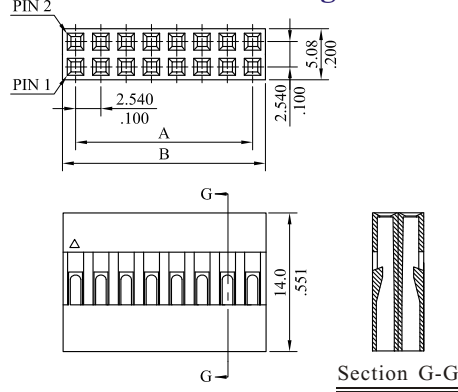
P/N 2665S \*\* 0000

$\frac{1}{1}$   
 1.No.of circuits

A=2.54mm (.100")x No.of spaces  
 B=A+2.54mm (.100")



## 2655 Series 2.54mm (.100") Dual Row Housing



## Features

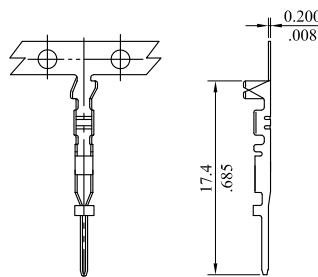
2655 Housing:  
 Available in 4~72 circuits  
 Can be used with Leoco 6001 polarizing key  
 Thermoplastic UL94V-1  
 Color: Black  
 Accepts Leoco 2653, 2663 crimp terminal

P/N 2655S \*\* 0000

$\frac{1}{1}$   
 1.No.of circuits

A=2.54mm (.100")x No.of spaces  
 B=A+2.54mm (.100")

## 2663T Crimping Terminal



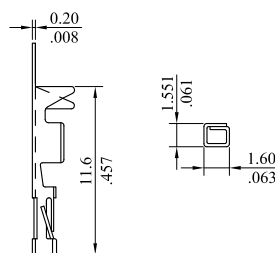
## Features

2663 Terminal:  
 Mates with Leoco 2653 crimp terminal  
 Copper alloy/Pre-tinned  
 Wire range: AWG 22~28

P/N 2663T\*B0000

Package: 10K PCS/Reel

## 2653T Crimping Terminal



## Features

2653 Terminal:  
 Twin leaf box shaped terminal  
 Mates with 0.64mm (.025") square pin  
 Phosphor bronze  
 Wire range: AWG 22~28

P/N 2653TPB \* 00 \*

$\frac{1}{2}$   
 1. Plating  
 0= Tin plated  
 F= Selective gold flash  
 2. Circuits range  
 1= Used in between 1 circuits and 7 circuits  
 2= Used in between 8 circuits and 20 circuits  
 3= Used in between 21 circuits and 40 circuits

Package: 8K PCS/Reel

# 2.54mm (.100") Wire to Board Connector

Unit:  $\frac{\text{mm}}{\text{Inch}}$

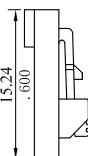
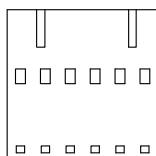
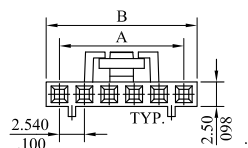
## Specifications

Current rating: 1A DC(signal)  
 5A DC(power)  
 Voltage rating: 250V DC  
 Temperature rating: -25°C~+105°C  
 Contact resistance: 20mΩ max.  
 Insulation resistance: 1000MΩ min.  
 Withstanding voltage: 500V  
 AC/min.(signal)  
 1000V AC/min.(power)

## Standards

Recognized No. E82349  
 RoHS Compliant

## 7066 Series 2.54mm (.100") Crimp Terminal Locking Socket



## Features

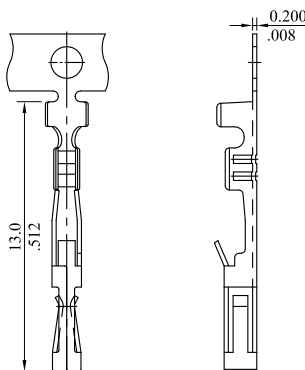
7066 Housing:  
 Available in 2~12 circuits  
 Low profile  
 With molded locking ramp  
 PBT UL94V-0  
 Accepts Leoco 7058 series crimp terminal

P/N 7066S \*\* 0000  
 I

1.No.of circuits

A=2.54mm(.100")x No.of spaces  
 B=A+2.54mm(.100")

## 7058T Crimping Terminal



## Features

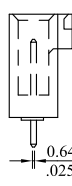
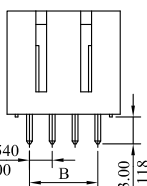
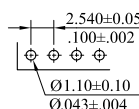
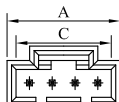
7058 Terminal:  
 Dual beam contact  
 Use in Leoco 7066 series socket  
 Accepts 0.64mm (.025") square pin  
 Phosphor bronze  
 Wire range: AWG 22~28

P/N 7058TPB \* 000  
 I

- Plating
    - 0= Tin plated 120u" min. over 30u"min. nickel overall
    - F= Selective gold flash over 30u"min. nickel overall
    - J= 15u" min. gold plated selective over 30u"min. nickel overall
- Package: 15K PCS/Reel

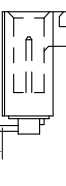
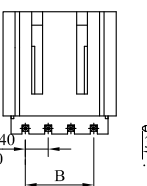
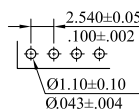
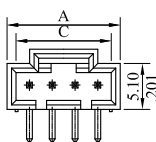
## 2550 Series 2.54mm (.100") Header

Straight (V version)



Recommended PCB Layout

Right Angle (H version)



Recommended PCB Layout

## Features

2550 Header:  
 Available in 2~12 circuits  
 With standoff  
 PBT UL94V-0  
 Accepts 0.64mm(.025") square pin  
 Contact: Brass

P/N 2550P \*\* \* 00  
 I 2 3

- No. of circuits
- V= Straight type  
 H= Right angle type
- Plating
  - T= Tin plated 120u" min. over 30u"min. nickel overall
  - U= Gold flash over 30u" min. nickel overall

