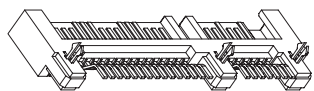
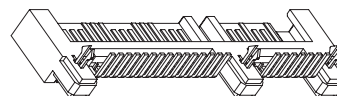


SATA 7+15P Male Connector For H.D Use

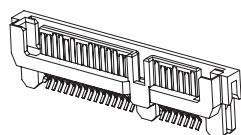
P/N:WATH-22DLBAU4



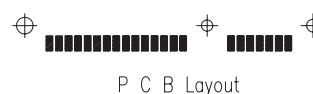
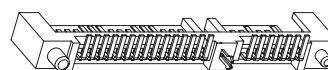
P/N:WATH-22DLBBU4



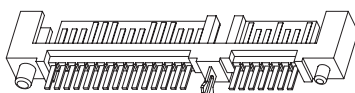
P/N:WATH-22DLBCU4



P/N:WATH-22DLBDU4

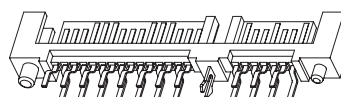


P/N:WATH-22DLBE(F)U4



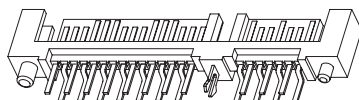
E: Pin2.10mm
F: Pin3.00mm

P/N:WATH-22DLBG(H)U4



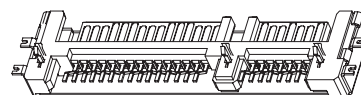
G: A Type Pin2.10mm
H: A Type Pin3.00mm

P/N:WATH-22DLBI(J)U4

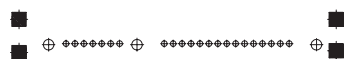
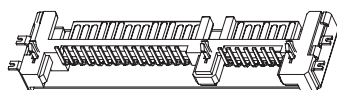


I: B Type Pin2.10mm
J: B Type Pin3.00mm

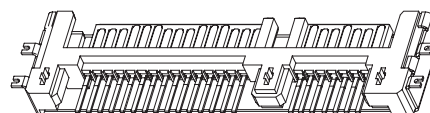
P/N:WATH-22DLBKU4



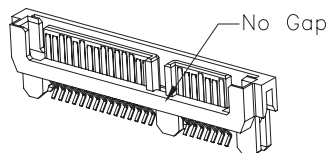
P/N:WATH-22DLBLU4



P/N:WATH-22DLBMU4



P/N:WATH-22DLBNU4



SATA 7+15P Male Connector For H.D Use

Material

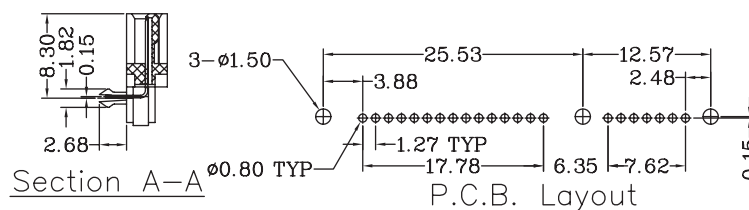
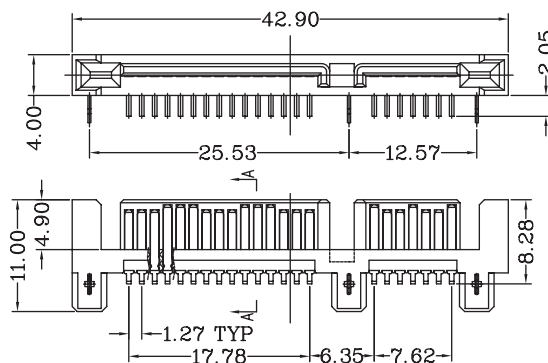
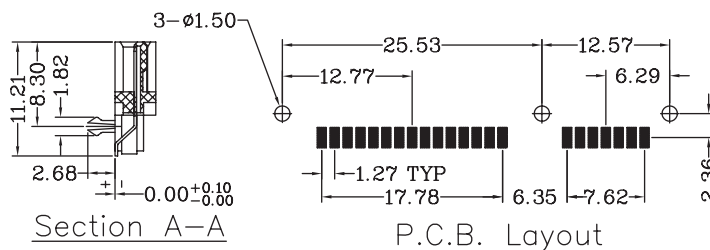
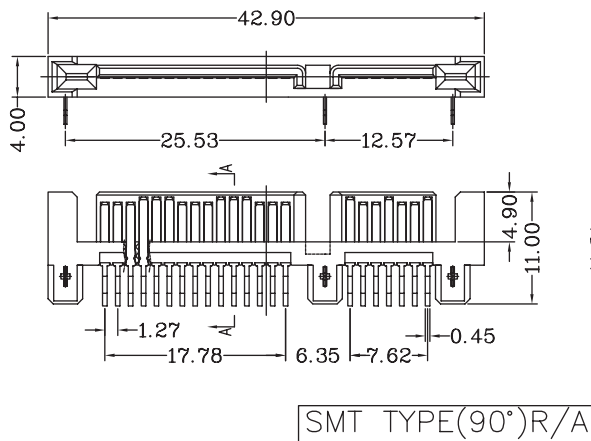
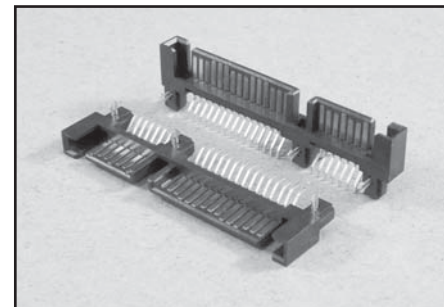
Body : High temperature thermoplastic,UL 94V-0
 Contacts : Copper alloy
 Contact Plating : Gold plating over Nickel on contact area;
 Tin plating on solder tail.

Electrical Specification

Current Rating: 1.5 Ampere per contact
 Contact Resistance: 30 Milliohms max.
 Insulation Resistance: 1000 Megohms min.
 Dielectric Withstanding Voltage: 500 VAC

Environmental

Operating Temperature: -55°C to +125°C



How To Order

| Series NO. | NO. of Contacts | Contact plating | Insulator body | Contact Material | Solder Positions |
|------------|-----------------|-----------------|----------------|------------------|------------------|
| WATH | 22 | D | L | B | A |

7+15P

Selective Gold
D: 15u"

L: LCP

B: Brass

A:R/A SMT B:R/A DIP C:Straddle Type
 D:Vertical SMT N:Straddle Type
 E:Vertical DIP Pin 2.10mm
 F:Vertical DIP Pin 3.00mm
 G:Vertical Dual Row DIP A Type (Pin2.10mm)
 H:Vertical Dual Row DIP A Type (Pin3.10mm)
 I:Vertical Dual Row DIP B Type (Pin2.10mm)
 J:Vertical Dual Row DIP B Type (Pin3.10mm)
 K:R/A Metal Shield SMT
 L:R/A Metal Shield DIP
 M:R/A Metal Shield(Vertical Terminal)
 P:R/A SMT Type(With Cap)

| Selective Lead | Mark | Packing | Post |
|----------------|------|---------|------|
| U | | 4 | |

U: Lead Free

W: Winning Mark
Blank: No Mark

3: Tray
4: Tube

Blank: With-Post
N: Non-Post

SATA 7+15 Male R/A Type

Material

Housing: LCP, UL 94V-0 Rated; Color: Black.
 Contact: Brass;
 Plating : Gold plating over Nickel on contact area;
 Tin plating on solder tail
 Harpoon: Brass;
 Plating: Tin plating over Nickel.

Mechanical:

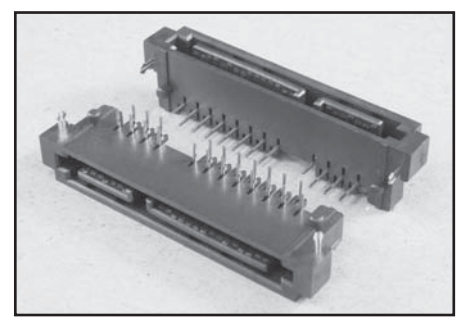
Insertion Force: 45N max.
 Withdrawal Force: 10N min.
 Durability: 500 cycles

Electrical Specification

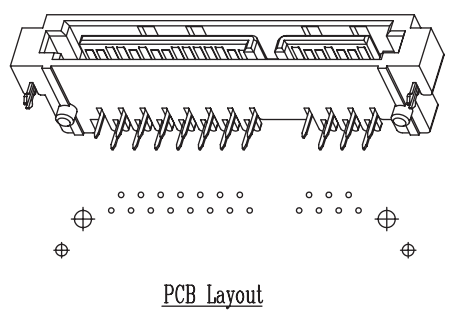
Current Rating: 1.5 Ampere per contact
 Contact Resistance: 30 Milliohms max.
 Insulation Resistance: 1000 Megohms min.
 Dielectric Withstanding Voltage: 500 VAC

Environmental

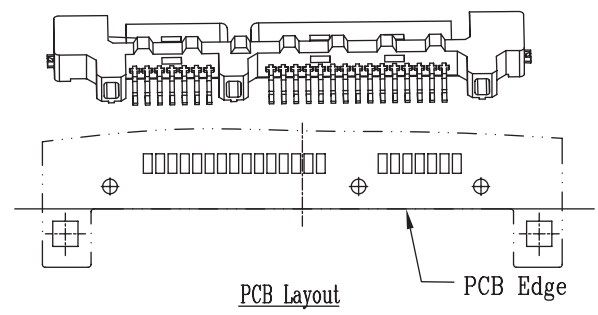
Operating Temperature: -55°C to +125°C



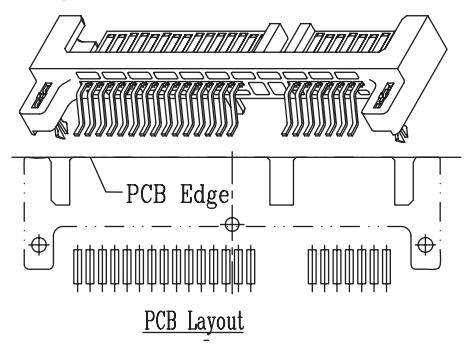
P/N:WATHC-22D2L1BU4



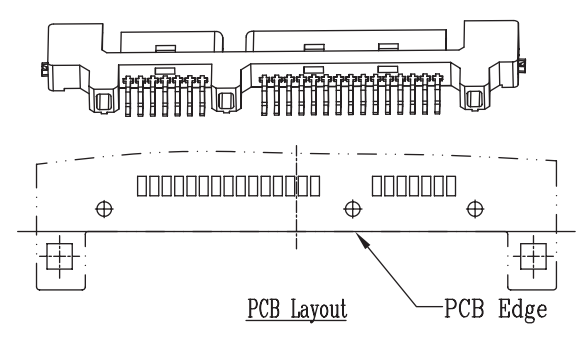
P/N:WATHC-22D3L1BU3



P/N:WATHC-22D5L1BU3



P/N:WATHC-22D6L1BU3



How To Order

| | | | | |
|----------------------------------|-----------------------------------|--|--|----------------------------------|
| Series NO. WATHC | NO. of Contacts 22 7+15 Pin | Contact Plating D Selective Gold D:15u" | Contact Type 2 2:Double Row(90°) 3:SMT Type 5:SMT (90°) Reverse 6:SMT(Subside Type) | Insulator Material L L:LCP |
| Insulator Color 1 1: Black | Contact Material B B: BRASS | Selective Lead U U:Leade Free | Mark W:Winning MARK Blank:NO MARK | Packing 4 3:Tray 4:Tube |