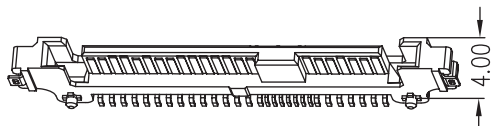


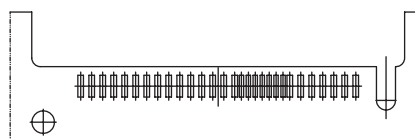
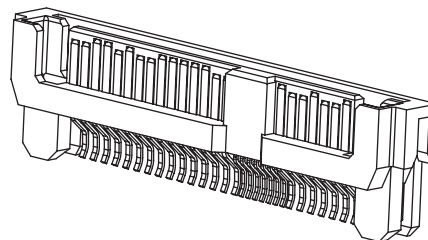
SAS 29P Male Type

P/N:WSAM-29F3L1BU4



P.C.B LAYOUT

P/N:WSAM-29F4(6)L1BU3

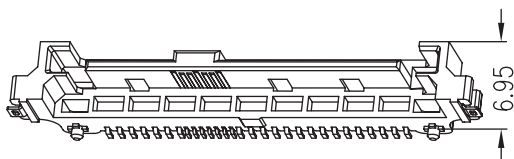


P.C.B LAYOUT

4:Straddle For T=1.0mm

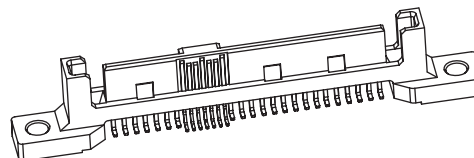
6:Straddle For T=1.6mm

P/N:WSAM-29F5L1BU4



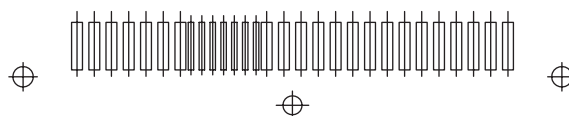
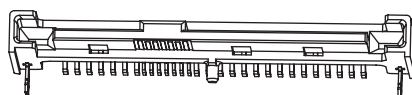
P.C.B LAYOUT

P/N:WSAM-29F7L1BU4



P.C.B LAYOUT

P/N:WSAM-29F8L1BU4



P.C.B LAYOUT

SAS 29P Male Type

Material

Housing: LCP(Black),UL 94-0 Rated;
 Contact: Phosphor Bronze;
 Plating: Gold plating over Nickel on contact area;
 Tin plating on solder tail.
 Harpoon: Phosphor Bronze;
 Plating: Tin plating over Nickel.

Mechanical:

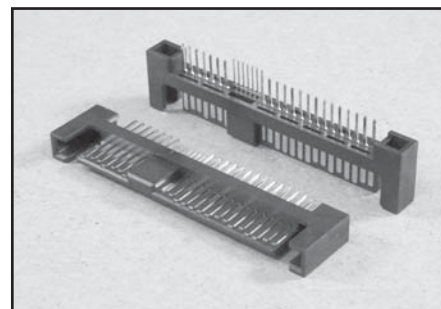
Insertion Force: 45N max.
 Withdrawal Force: 10N min.
 Durability: 500min.

Electrical Specification

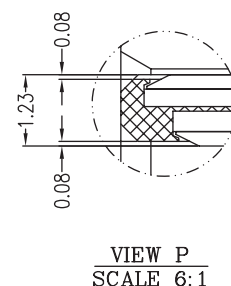
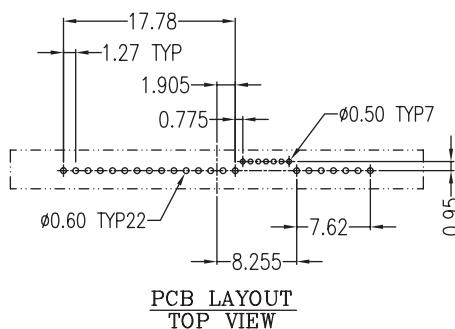
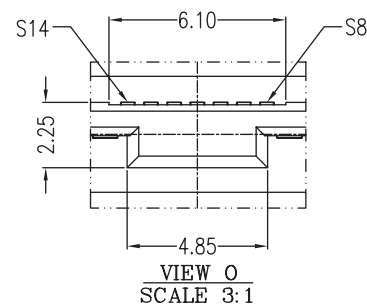
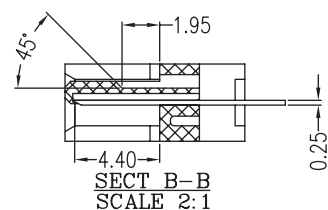
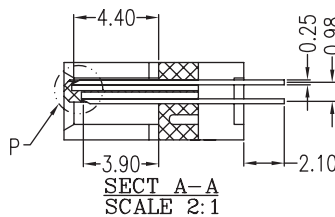
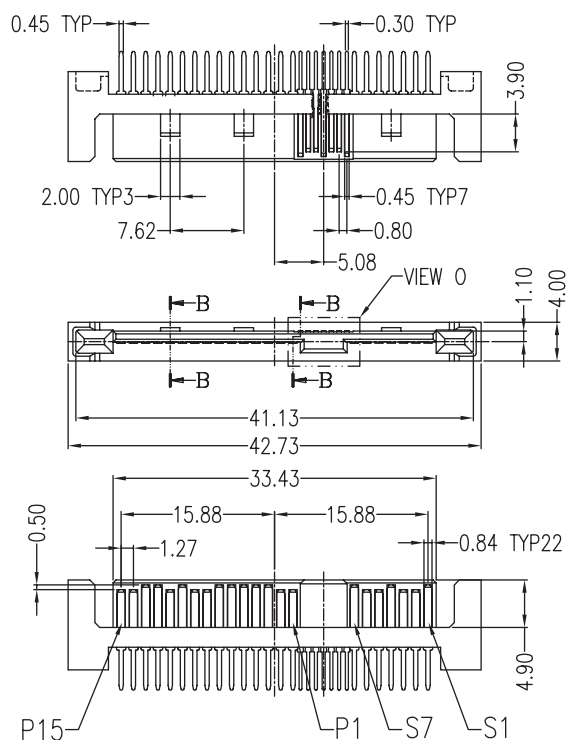
Current Rating: 1.5 Ampere per contact.
 Contact Resistance: 15 Milliohms max.
 Insulation Resistance: 1000M OHM MIN.
 Dielectric Withstanding Voltage: 500VAC.

Environmental

Operating Temperature: -55°C to +125°C



P/N:WSAM-29F1L1BU4



How To Order

Series NO. WSAM	NO. of Contacts 29	Contact plating F Selective Gold F:30u"	Contact Type 1 1:Standard Type(180°) 3:SMT 4:Straddle Type(1.0) 5:SMT(Vertical 6.59mm) 6:Straddle Type(1.6) 7:Screw Type(SMT) 8:Reverse SMT (Metal Posts)	Insulator Material L L:LCP
Insulator Color 1 1:Black	Contact Material B B:Brass	Selective Lead U U:Lead Free	Mark Blank:No Mark W:Winning Mark	Packing 4 3:Tray 4:Tube