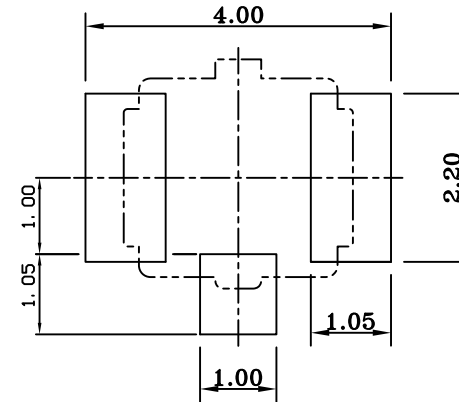
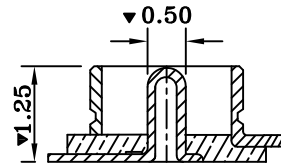
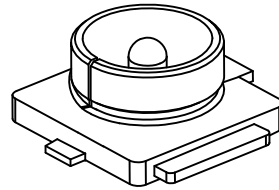
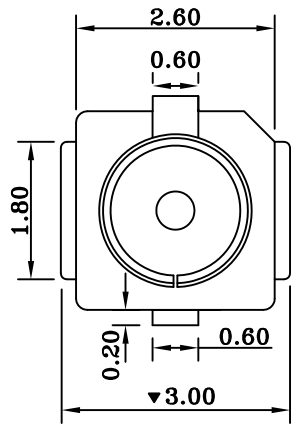
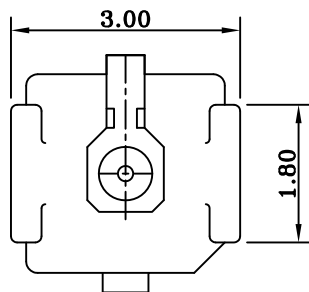
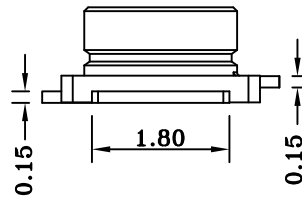
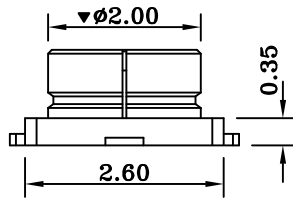


REV.	DESCRIPTION	DRAWN	ECN	DATE
A	NEW RELEASE (3006-8018)	TINA	08-278	10-22'2008



RECOMMENDED PCB LAYOUT



DESCRIPTION	MATERIALS	FINISHED
SHEEL	COPPER ALLOY	GOLD FLASH
CONTACT	COPPER ALLOY	GOLD 5u"
HOUSING	LCP UL94 V-0	IVORY

RoHS
COMPLIANT
2002/95/EC

UNLESS OTHERWISE SPECIFIED ALL TOLERANCES ARE:			
DIMENSION	ANGLE		
INTEGRAL DIMENSIONS ±1.0	ANGULAR DIMENSIONS ±5.0°		
1 PLACE DECIMAL ±0.5	HOLES UNDER Ø0.5 ±0.1		
2 PLACE DECIMALS ±0.25	ROUGHNESS		
	FINISH: SEE TABLE	MATERIAL: SEE TABLE	

DRAWN BY: TINA				DATE: 10-22'2008				TITLE: RF HEADER			
ENGR BY: TINA				DATE: 10-22'2008				Model NO: 39801			
APVD BY:				DATE:				Drawing NO: 39801			
UNIT: MM		SIZE: A4		REV. A		CAD FILE :		SCALE: 10:1		SHEET 1 OF 1	
Z:\NEW Dwg\39XXX											