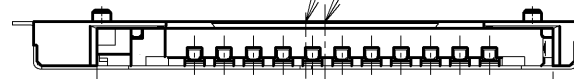


CENTER OF CARD INSERTION SLOT

CENTER OF CONNECTOR



20.1^{+0.1} (CARD GUIDE DIM.)

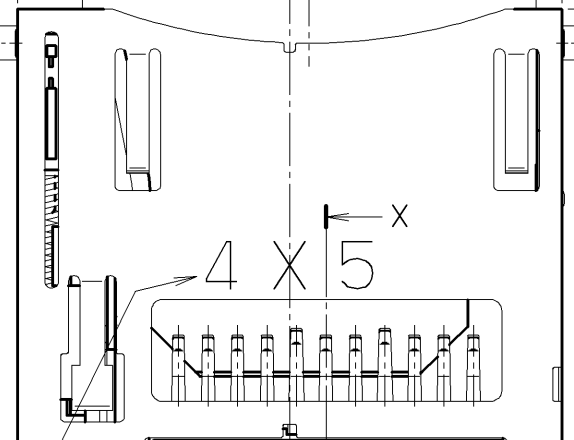
2.1^{+0.05}

4 (EJECT STROKE)
3.5 (CARD MATING POSITION)

26^{+0.2}
24^{+0.1}

0.85^{+0.1}

1 (PUSH STROKE)
21^{+0.1}



4 X 5
X

JAPAN

X'

DATA CODE

SEE NOTE.312-0.4^{+0.1}

1.3^{+0.1}

4.9^{+0.1}

1.0^{-0.1}

11.3^{+0.1}

0.8^{+0.1}

1.3^{+0.1}X10=13^{+0.15}

POS. NO.

8 7 6 5 4 11 10 3 2 1 9

0.5 MAX.

HONDA
PRINT RM
MAY.24, 2006
ISSUED

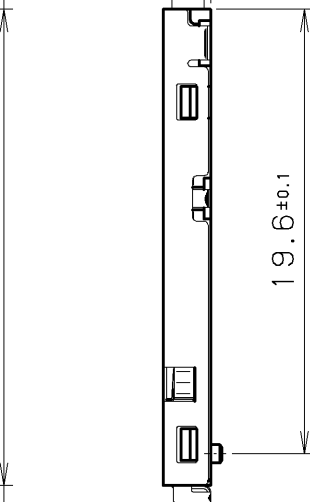


TABLE 1

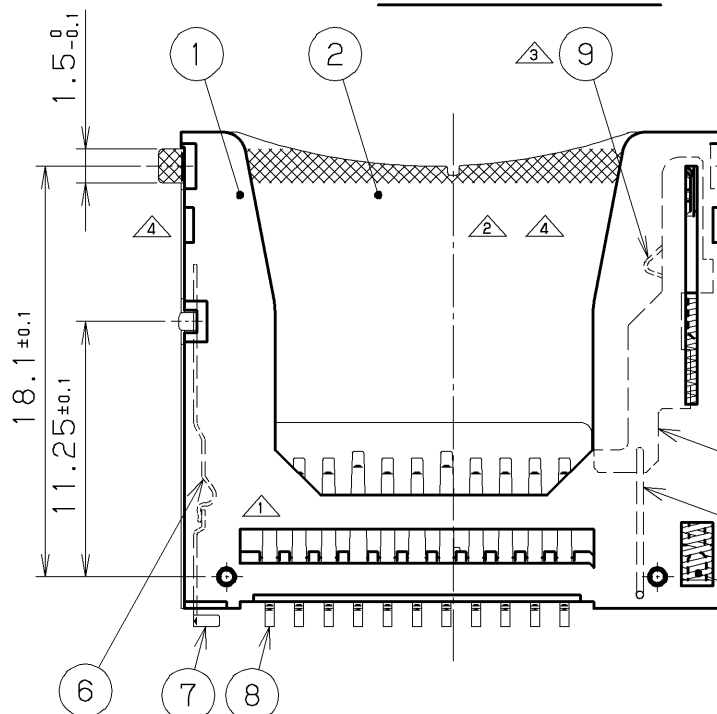
CARD WEARING STATE	CARD DETECT SWITCH
CARD INSERTED	A ● B ● : OFF
WITHOUT CARD	A ● B ● : ON

A: ⊙ CARD DETECT SWITCH CONTACT A
B: ⊙ CARD DETECT SWITCH CONTACT B

1.4^{+0.1}
0.3^{+0.05}
(CARD DIM.)



19.6^{+0.1}



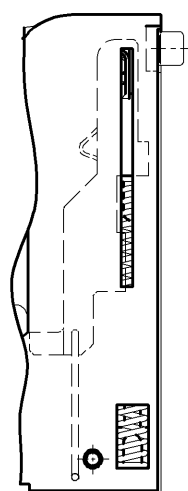
18.1^{+0.1}

11.25^{+0.1}

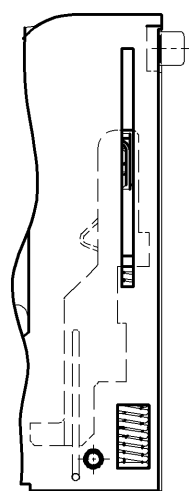
6

7

8



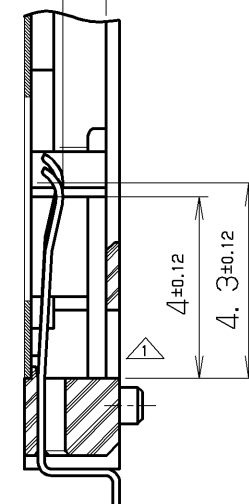
UNLOCK



LOCK

FIG. 1 (CONNECTOR REVERSE SIDE)

0.95^{+0.05}
-0.12



SECTION X-X'

4^{+0.12}

4.3^{+0.12}

1.8^{+0.1} 23.2^{+0.1} 1.8^{+0.1}

1.7^{+0.1} 1.7^{+0.1}

11.1^{+0.05} 1.4^{+0.1}

19.6^{+0.1} 18.1^{+0.05} 1.2^{+0.1}

9^{+0.05} 10^{+0.05} 11.25^{+0.05} 18.1^{+0.05}

2-∅0.85^{+0.05} POS. No.

8 7 6 5 4 11 10 3 2 1 9

12-0.85^{+0.05} 1.3^{+0.05} 10.0^{-0.1} 1.7^{+0.1}

1.6^{-0.1} 4.9^{+0.05} 0.9^{+0.1} 2.4^{+0.1}

1.3^{+0.05}X10=13^{+0.1}

1.5 MIN. GOLD PLATING AREA (SHELL)

RECOMMENDED P. C. B. LAYOUT

NOTE 1. THIS CONNECTOR MUST BE MOUNTED (REFLOWED) UNDER THE CONDITION OF CARD UNLOCKED STATEMENT SHOWN IN FIG.1.

2. COPLANARITY:0.12MAX.

△3. MEANING OF DATE CODE

4: LAST DIGIT OF YEAR (2004)

X: MONTH (1~9, X, Y, Z)

5: WEEK (1~5) △

DATE	BY	REV.	DESCRIPT	No.	PART NAME	MATERIAL	QTY	FINISH	NOTE
△6 MAY.23, 2006	K. O		Changed DATE CODE.	9	LOCK TERMINAL	STAINLESS STEEL	1		
△5 FEB.16, 2006	K. O		Added pin plating.	8	SIGNAL CONTACT	PHOSPHOR BRONZE	11	△Ni+Au	
△4 OCT.19, 2005	K. O		Changed insulatorA form.	7	CARD DETECT SWITCH CONTACT B	PHOSPHOR BRONZE	1	△Ni+Au	
△3 AUG.02, 2005	K. O		Changed insulatorB form and added lock terminal.	6	CARD DETECT SWITCH CONTACT A	PHOSPHOR BRONZE	1	△Ni+Au	
△2 MAY.16, 2005	K. O		Changed insulatorA form.	5	COILED SPRING	STAINLESS STEEL	1		
△1 NOV.04, 2004	K. O		Changed finish and insulatorA form etc.	4	PIN	STAINLESS STEEL	1	△Black Ni	
				3	INSULATOR B	HEAT RESISTING RESIN	1		UL94V-0 BLACK
				2	SHELL	STAINLESS STEEL	1	Ni+Au	
				1	INSULATOR A	HEAT RESISTING RESIN	1		UL94V-0 BLACK

LTR.	DATE	BY	REV.	DESCRIPT	No.	PART NAME	MATERIAL	QTY	FINISH	NOTE

DATE	SCALE	UNIT	3RD. A. P	HONDA TSUSHIN KOGYO CO., LTD.			
SEP.21(2004)	3/1	mm (INCH)					
APP. DATE&REV.							
DR.	DE.	CHK.	CHK.	APP.	NAME	THE SLOT CONNECTOR FOR miniSD CARD (PUSH PUSH REVERSE TYPE)	
K. OOKU	K. OOKU	K. HASUMI	K. ONO	H. EBIHARA	PART NO.	SDA-R11LFYG+	
						REV.	6F