

1.50mm (.059") Wire to Board Connector

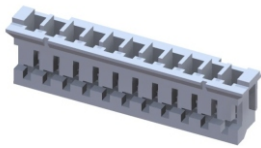
Unit: $\frac{\text{mm}}{\text{Inch}}$

Specifications

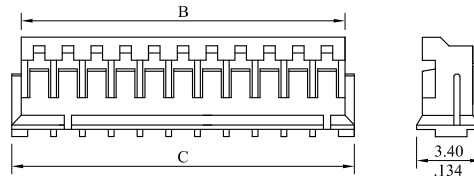
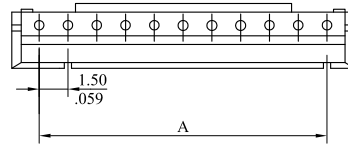
Current rating: 1A AC DC
 Voltage rating: 50V AC DC
 Temperature rating: -25°C~+85°C
 Contact resistance: 20mΩ max.
 Insulation resistance: 500MΩ min.
 Withstanding voltage: 500V AC/min.

Standards

RoHS Compliant



1510 Series 1.50mm (.059") Housing



Features

1510 Housing:
 Available in 2~13 circuits
 Nylon 66 UL94V-0

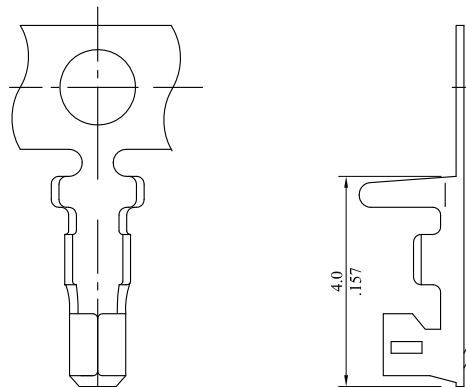
P/N 1510S ** 0000
I

1.No. of circuits

A=1.5mm(.059")x No. of spaces
 B=A+1.8mm(.071")
 C=A+3.0mm(.118")



1510T Crimping Terminal



Features

1510 Terminal:
 Phosphor bronze/Tin plated
 Wire range: AWG 26~32

P/N 1510TPB0000

Package: 10K PCS/Reel

1.50mm (.059") Wire to Board Connector

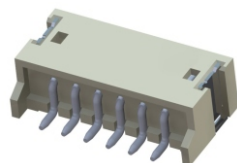
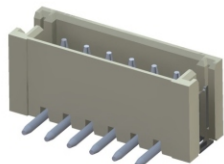
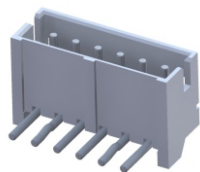
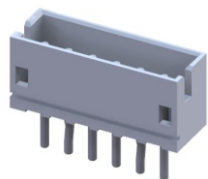
Unit: $\frac{\text{mm}}{\text{Inch}}$

Specifications

Current rating: 1A AC DC
 Voltage rating: 50V AC DC
 Temperature rating: -25°C~+85°C
 Contact resistance: 20mΩ max.
 Insulation resistance: 500MΩ min.
 Withstanding voltage: 500V AC/min.

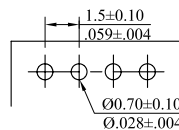
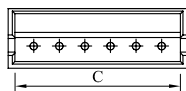
Standards

RoHS Compliant

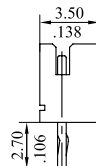
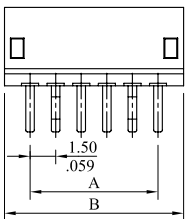


1511 Series 1.50mm (.059") Header

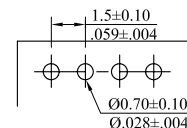
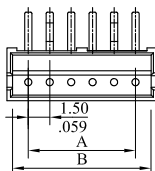
Straight (V version)



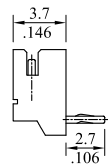
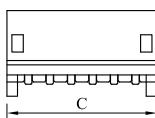
Recommended PCB Layout



Right Angle (H version)



Recommended PCB Layout



Features

1511 Header:
 Nylon 66 UL 94V-0
 Brass/Tin plated
 0.50 (.002") square pin
 PCB thickness 0.6~1.2mm

P/N 1511P $\frac{}{1} \frac{*}{2} \frac{000}{2}$**

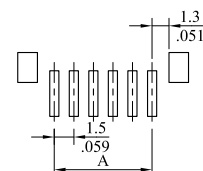
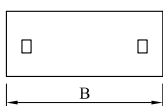
- No. of circuits
- V= Straight type
H= Right angle type

A= 1.5mm (.059") x No. of spaces
 B= A+3.0mm (.118")
 C= A+2.0mm (.079")

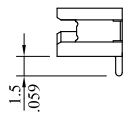
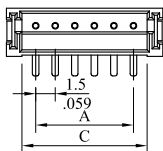
A= 1.5mm (.059") x No. of spaces
 B= A+2.2mm (.087")
 C= A+3.0mm (.118")

1511 Series 1.50mm (.059") Header SMT Type

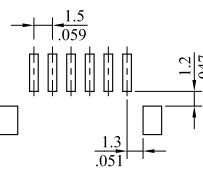
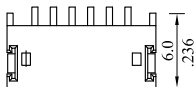
Straight (V version)



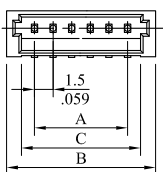
Recommended PCB Layout



Right Angle (H version)



Recommended PCB Layout



Features

1511 Header:
 Nylon 6T UL 94V-0
 Brass/Tin plated
 0.50 (.002") square pin

P/N 1511P $\frac{}{1} \frac{M}{2} \frac{*}{3} \frac{00}{3}$**

- No. of circuits
- M= SMT type
- V= Straight type
H= Right angle type

A= 1.5mm (.059") x No. of spaces
 B= A+4.5mm (.177")
 C= A+2.1mm (.083")