

1.00mm (.039") Wire to Board Connector

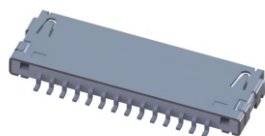
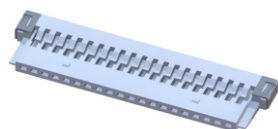
Unit: $\frac{\text{mm}}{\text{Inch}}$

Specifications

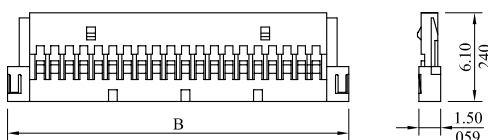
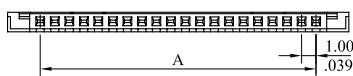
Current rating: 1A AC DC
 Voltage rating: 50V AC DC
 Temperature rating: -25°C ~ +85°C
 Contact resistance: 20mΩ max.
 Insulation resistance: 100MΩ min.
 Withstanding voltage: 500V AC/min.

Standards

RoHS Compliant



1000 Series 1.00mm (.039") Housing



Features

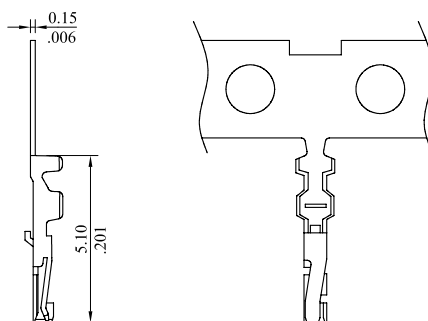
1000 Housing:
 Available in 8, 14, 20 and 30 circuits
 Nylon 6/6 UL94V-0

P/N 1000S ** 0000

I
 1.No.of circuits

A=1.0mm(.039") x No.of spaces
 B=A+4.5mm(.177")

1000T Crimping Terminal



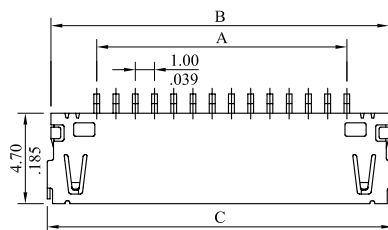
Features

1000 Terminal:
 Wire range: AWG 28 ~ 32
 Phosphor bronze /Gold flash

P/N 1000TPBU000

Package: 15K PCS/Reel

1000 Series 1.00mm (.039") Header SMT Type



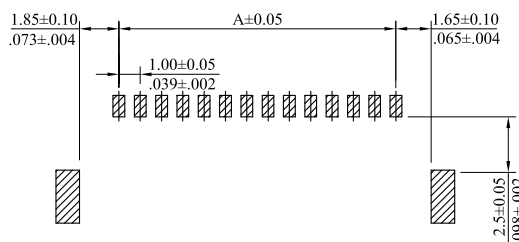
Features

1000 Header:
 Available in 8, 14, 20 and 30 circuits
 Wafer: Nylon 6T UL94V-0
 Pin & Shell: Phosphor bronze

P/N 1000P ** MH00

I
 1.No.of circuits

A=1.0mm(.039") x No.of spaces
 B=A+4.55mm(.179")
 C=A+4.95mm(.195")



Recommended PCB Layout

1.00mm (.039") Wire to Board Connector

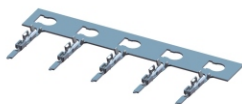
Unit: $\frac{\text{mm}}{\text{Inch}}$

Specifications

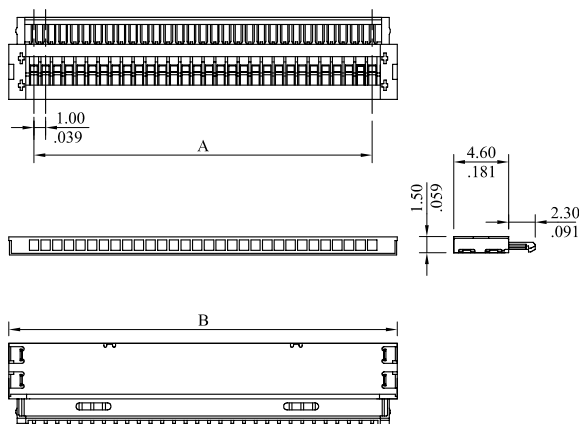
Current rating: 1A AC DC
 Voltage rating: 200V AC DC
 Temperature rating: -40°C ~ +80°C
 Contact resistance: 40mΩ max.
 Insulation resistance: 100MΩ min.
 Withstanding voltage: 500V AC/min.

Standards

RoHS Compliant



1050 Series 1.00mm (.039") Housing



Features

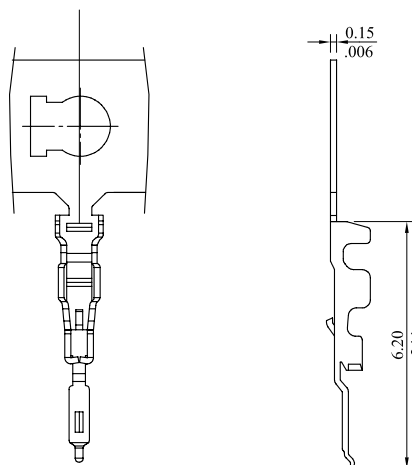
1050 Housing:
 Available in 20 and 30 circuits
 PA46 UL94V-0
 Shell: Copper alloy/Tin plated

P/N 1050S $\frac{**}{1}$ 0000

1. No. of circuits

$A = 1.00\text{mm} (.039\text{")}$ x No. of spaces
 $B = A + 4.3\text{mm} (.169\text{")}$

1050T Crimping Terminal



Features

1050 Terminal:
 Wire range: AWG 30~32
 Phosphor bronze/Gold flash

P/N 1050TPBU000

Package: 15K PCS/Reel

1.00mm (.039") Wire to Board Connector

Unit: $\frac{\text{mm}}{\text{Inch}}$

Specifications

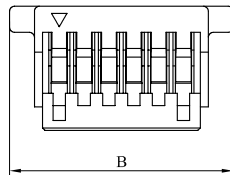
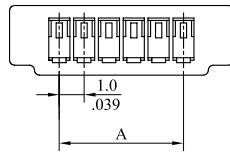
Current rating: 1A AC DC
 Voltage rating: 50V AC DC
 Temperature rating: -25°C ~ +85°C
 Contact resistance: 20mΩ max.
 Insulation resistance: 100MΩ min.
 Withstanding voltage: 500V AC/min.

Standards

Recognized No. E82349
 RoHS Compliant



1010 Series 1.00mm (.039") Single Row Housing



Features

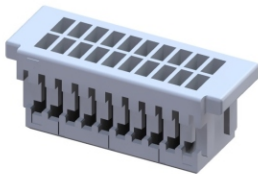
1010 Housing:
 Available in 2~20 circuits
 PBT UL94V-0

P/N 1010S $\frac{**}{1}$ 0000

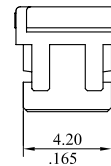
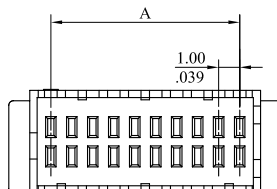
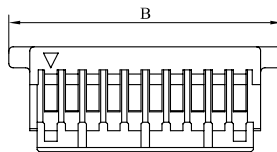
1. No. of circuits

A=1.0mm (.039") x No. of spaces

B=A+4.0mm (.157")



1020 Series 1.00mm (.039") Dual Row Housing



Features

1020 Housing:
 Available in 20, 30, 40 and 50 circuits
 PBT UL94V-0

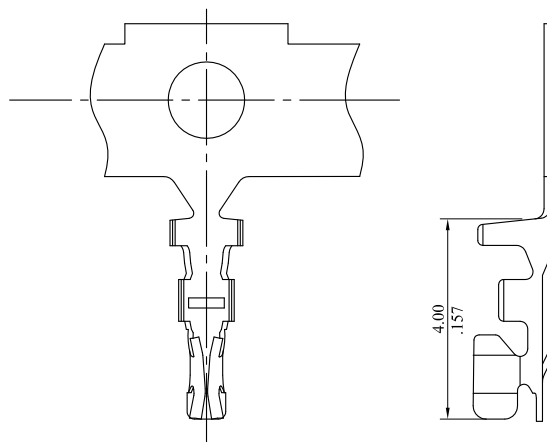
P/N 1020S $\frac{**}{1}$ 0000

1. No. of circuits

A=1.0mm (.039") x No. of spaces

B=A+4.0mm (.157")

1010T Crimping Terminal



Features

1010 Terminal:
 Wire range: AWG 28~32
 Phosphor bronze

P/N 1010TPB $\frac{*}{1}$ 000

1. Plating:

0= Tin plated 120u" min. over
 30u" min. nickel overall

U= Gold flash over
 30u" min. nickel overall

Package: 15K PCS/Reel

1.00mm (.039") Wire to Board Connector

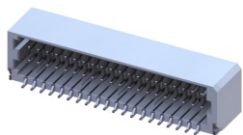
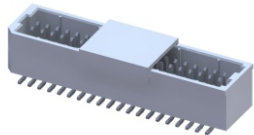
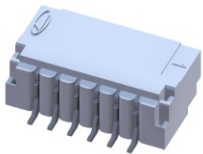
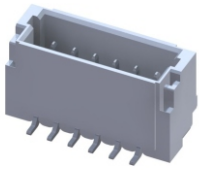
Unit: $\frac{\text{mm}}{\text{Inch}}$

Specifications

Current rating: 1A AC DC
 Voltage rating: 50V AC DC
 Temperature rating: -25°C ~ +85°C
 Contact resistance: 20mΩ max.
 Insulation resistance: 100MΩ min.
 Withstanding voltage: 500V AC/min.

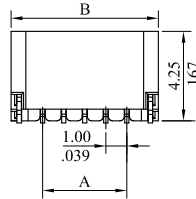
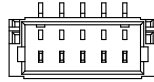
Standards

Recognized No. E82349
 RoHS Compliant

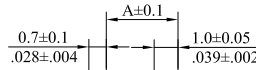
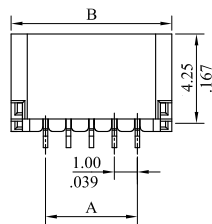
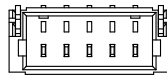


1010 Series 1.00mm (.039") Header

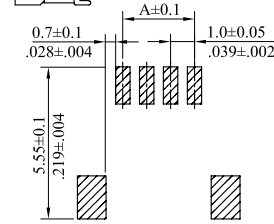
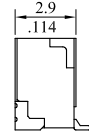
Straight (V version)



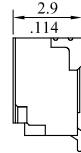
Right Angle (H version)



Recommended PCB Layout

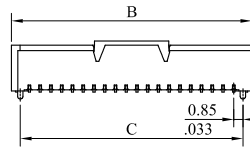
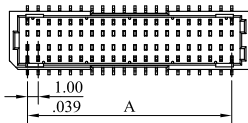


Recommended PCB Layout

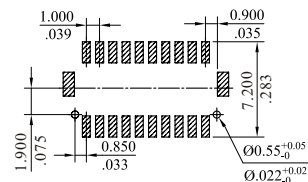
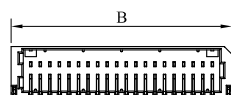
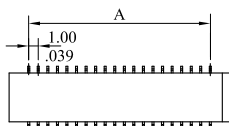


1020 Series 1.00mm (.039") Header

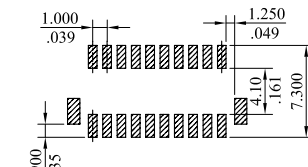
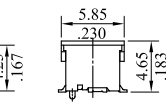
Straight (V version)



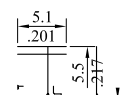
Right Angle (H version)



Recommended PCB Layout



Recommended PCB Layout



Features

1010 Header:
 Available in 2~20 circuits
 Wafer: Nylon 6T UL94V-0
 Pin: Brass/Tin plated

P/N 1010P ** $\frac{M}{1}$ $\frac{M}{2}$ $\frac{M}{3}$ * 00

- 1.No. of circuits
- 2.M=SMT type
3. H=Right angle type
V=Straight type

A=1.0mm(.039") x No. of spaces
 B=A+3.0mm(.188")

Features

1020 Header:
 Available in 20, 30, 40 and 50 circuits
 Wafer: Nylon 6T UL94V-0
 Pin: Brass/Tin plated

P/N 1020P ** $\frac{M}{1}$ $\frac{M}{2}$ $\frac{M}{3}$ * 00

- 1.No. of circuits
- 2.M=SMT type
- 3.V=Straight type
J=Have pillar straight type

A=1.0mm(.039") x No. of spaces
 B=A+3.3mm(.130")
 C=A+1.7mm(.067")

P/N 1020P ** $\frac{M}{1}$ $\frac{M}{2}$ $\frac{M}{3}$ * 00

- 1.No. of circuits
- 2.M=SMT type
3. H=Right angle type

A=1.0mm(.039") x No. of spaces
 B=A+4.1mm(.161")