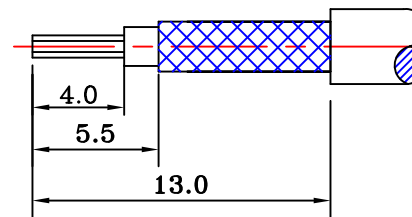
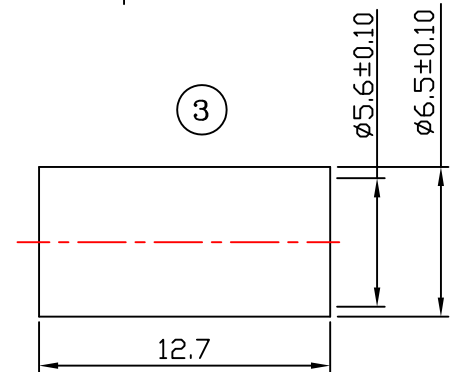
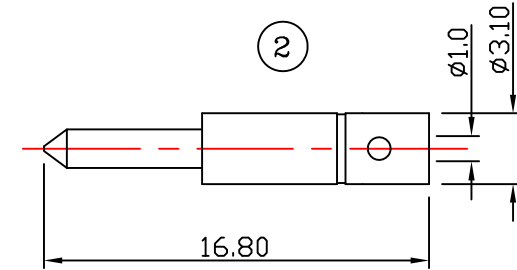
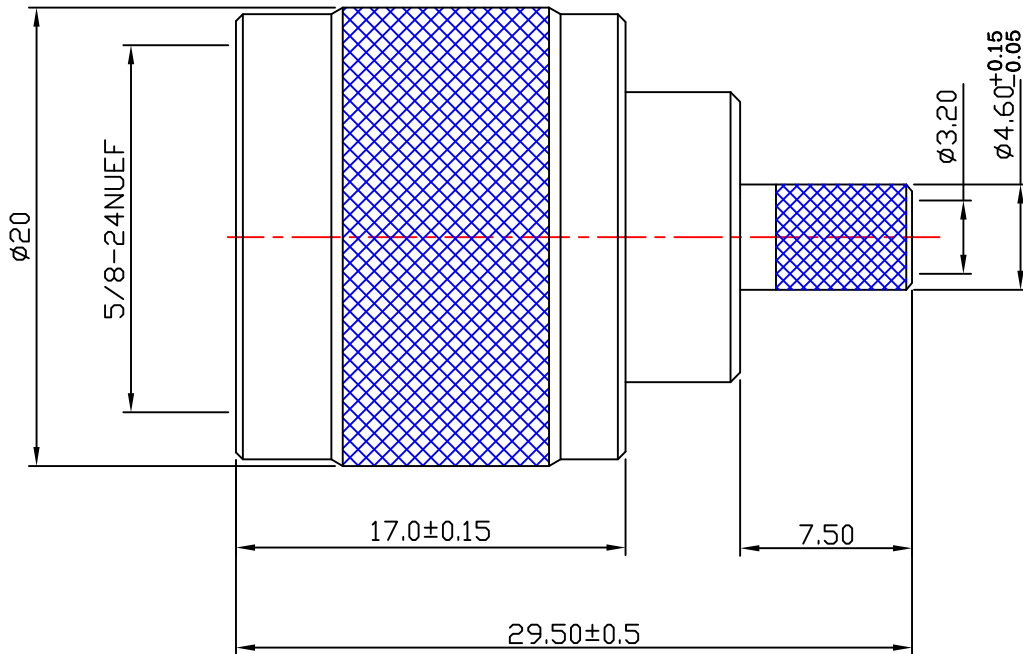




REV.	DESCRIPTION	DRAWN	ECN	DATE
D	SEE ECN(M92-1037)	Sammi	03-447	10-29'2003
E	SEE ECN(3005-6059)	TINA	06-221	08-04'2006
F	SEE ECN(3007-8418)	TINA	08-297	11-12'2008



Recommended Cable Stripping Dim's

ITEM	DESCRIPTION	MATERIALS	FINISHED
3	FERRULE	BRASS	NONE
2	CONTACT	BRASS	GOLD
1	WASHER	STEEL	NICKEL
	GASKET	RUBBER	NONE
	INSULATOR	DELTRIN	NONE
	BODY	BRASS	NICKEL
	BODY	BRASS	NICKEL
	BODY	BRASS	NICKEL
	SHELL	BRASS	NICKEL

NOTES:

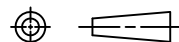
- 1.NOMINAL IMPEDANCE: 50 OHMS.
- 2.FREQUENCY RANGE:0~3.0 GHz
- 3.VOLTAGE RATING: 1000 VOLTS RMS.
- 4.DIELECTRIC WITHSTANDING VOLTAGE: 2500 RMS.

RoHS

COMPLIANT
2002/95/EC

UNLESS OTHERWISE SPECIFIED ALL TOLERANCES ARE:

DIMENSION	TOLERANCE	ANGLE	TOLERANCE
INTEGRAL DIMENSIONS	± 1.0	ANGULAR DIMENSIONS	$\pm 5.0^\circ$
1 PLACE DECIMAL	± 0.3	HOLES UNDER $\phi 0.5$	± 0.1
2 PLACE DECIMALS	± 0.15	ROUGHNESS	



FINISH: SEE TABLE MATERIAL: SEE TABLE



DRAWN BY:	TINA	DATE:	10-05'2001
ENGR BY:	TINA	DATE:	10-05'2001
APVD BY:		DATE:	

TITLE: **N STRAIGHT PLUG CRIMP TYPE FOR RG58/U**

Model NO: **S-6601-W00A**

Drawing NO.: **6601-W00A**

UNIT:	MM	SIZE:	A4	REV.	F	CAD FILE :	
SCALE:	3:1	SHEET	1	OF	1	Z:\Sales\N\	